

# ***Svorníky pro přivařování - obloukové***

***DIN 32500***

***KATALOG PRODUKTŮ (vč. objednacích čísel)***

***PROWELD***

***P.O.BOX 112***

***MARIÁNSKOHORSKÁ 35***

***702 00 OSTRAVA 2***

***TELEFAX.: 00420-596 623 298***

***TELEFON: 00420-596 619 187***

***MOBIL: 00420-603 491 549***

***web: <http://www.proweld.cz/>***

***e-mail: [proweld@proweld.cz](mailto:proweld@proweld.cz)***



# **Přivařování zdvihovým zážehem**

materiál ocel, nerez a žáruvzdorná ocel

## **Přivařování zdvihovým zážehem - průměrový rozsah 2 - 12 mm**

Jedná se o přivařování svorníků na principu elektrického oblouku, bez přídavného materiálu. Tato metoda se dále dělí na přivařování bez ochrany pro průměry 2 - 6 ( 8 ) mm a přivařování v ochranné atmosféře v rozsahu 2 - 12 mm. Svařovací proud se pohybuje v rozmezí 200 A - 900 A, svařovací čas od 5 msec - cca 140 msec, dle přivařovaného průměru.

Pro přivařování jsou vhodné svorníky a díly dle DIN 32500, jako i různé jiné součásti vyrobené ze svařitelného materiálu.

Použití ve stavebnictví, strojírenství, kovovýrobě.

## **Přivařování zdvihovým zážehem - průměrový rozsah 4 - 25 mm**

Princip je stejný jako u rozsahu 2 - 12mm. Vyznačuje se tím, že svar probíhá v uzavřeném prostoru tvořeném keramickým kroužkem či v ochranné atmosféře. To slouží jednak k formování taveniny, jednak k uzavření prostoru v okolí svorníku. Vznikající elektrický oblouk vytěsňuje kyslík a svar probíhá ve vakuu. Použití je pro průměry 4 - 25 mm, svařovací proud cca 200 - 2600 A, svařovací čas 20 msec - 1 sec. Pro přivařování jsou určeny svorníky dle DIN 32500 vhodné pro součásti ze svařitelné oceli, kotvy do betonu, spřahovací trny.

Svorníky se vyrábějí s hliníkovou kuličkou. Potom jsou určeny pro přivařování zdvihovým zážehem s ochranou keramickými kroužky. Tyto se do průměru cca 10 mm mohou přivařovat také s ochrannou atmosférou. Větší průměry (12 mm) nejsou s hliníkovou kuličkou vhodné, neboť hliník se nestačí vyplavit na povrch tavné lázně a může způsobit křehkost svaru.

Pro tento druh ochrany, ochranná atmosféra, se vyrábějí speciální svorníky bez hliníkové kuličky s ostřejším kuzelem, případně je možné tímto způsobem přivařovat svorníky pro kondenzátorové přivařování.

**Přivařování zdvihovým zážehem se používá především v těžkém průmyslu a strojírenství a všude tam, kde jsou vysoké nároky na pevnost svaru ( hluboký průvar). Specifické nasazení ve stavebnictví na mostní konstrukce ( použití spřahovacích trnů), obezdívky vysokoteplotních kotlů apod.**

### **Rozměry svorníků**

Svorníky odpovídají DIN 32500.

### **Objednávání svorníků a dodávka**

Svorníky jsou objednávány zákazníky telefonicky nebo písemně. V případě telefonické objednávky je dohodnut druh svorníků, v případě písemné objednávky je nutno uvést objednávací číslo.

### **OBCHODNÍ PODMÍNKY ( platné pro rok 2010 ):**

**Zboží je zasíláno poštou jako obchodní balík ( doručení druhý den po podání ).**

**Cena poštovného je 80Kč ( balík do 30kg ).**

**Cena poštovného s dobírkou je 130Kč ( balík do 30 kg ).**

**Cena poštovného do cizí země je dle platného ceníku České pošty.**

**Zboží lze zaslat vlakem cena 180Kč ( balík do 15 kg ).**



## **KATALOG PRODUKTŮ ( vč. objednacích čísel )**

**Svorník MR ( RD ) ocel 4.8      St37-3k**  
**Svorník MR ( RD ) nerez      A2-50**  
**Svorník MR ( RD ) nerez      1.4571**

**Svorník MPF ocel 4.8      St37-3k**  
**Svorník MPF nerez      A2-50**  
**Svorník MPF nerez      1.4571**

**Svorník MP ( PD ) ocel 4.8      St37-3k**  
**Svorník MP ( PD ) nerez      A2-50**  
**Svorník MP ( PD ) nerez      1.4571**

**Svorník MD ocel 4.8      St37-3k**  
**Svorník MD nerez      A2-50**  
**Svorník MD nerez      1.4571**

**Svorník s vnitřním závitem ID ocel 4.8      St37-3k**  
**Svorník s vnitřním závitem ID nerez      A2-50**  
**Svorník s vnitřním závitem ID nerez      1.4571**

**Svorník bez závitu UD ocel 4.8      St37-3k**  
**Svorník bez závitu UD nerez      A2-50**  
**Svorník bez závitu UD nerez      1.4571**

**Svorník MPF DUO ( St37-3k ÷ A2-50 )**

**Svorník MPF DUO ( St37-3k ÷ 1.4571 )**

**Svorník MR DUO ( St37-3k ÷ A2-50 )**

**Svorník MR DUO ( St37-3k ÷ 1.4571 )**

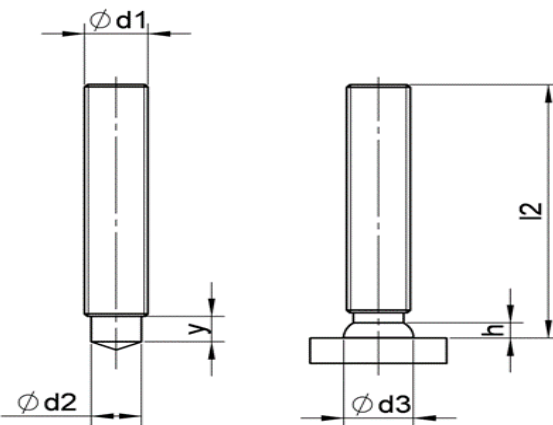
**Spřahovací trn SD      St37-3k**  
**Spřahovací trn SD      A2-50**

# Svorník se závitem *typ MR (RD)*

druh materiálu:

- materiál : ocel 4.8 **St37-3k**

$d_1$	$I_2$	$y$	$d_2$	$d_3$	$h$
M6	15~100	4	4,7	6,7	2,5
M8	15~100	4	6,2	8,8	2,5
M10	15~100	5	7,9	11	3
M12	20~100	6	9,5	13	4
M16	25~100	7,5~11	13,2	18	5
M20	30~100	9~13	16,5	23	6
M24	50~100	12~15	20	28	7

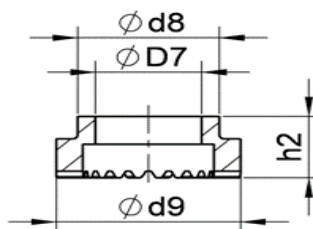


Rozměr \_\_\_\_\_ Objednáací číslo \_\_\_\_\_

Keramický kroužek \_\_\_\_\_

M 6 x 15	41-06-015
M 6 x 20	41-06-020
M 6 x 25	41-06-025
M 6 x 30	41-06-030
M 6 x 35	41-06-035
M 6 x 40	41-06-040
M 6 x 45	41-06-045
M 6 x 50	41-06-050
M 6 x 55	41-06-055
M 6 x 60	41-06-060
M 6 x 70	41-06-070
M 6 x 80	41-06-080
M 6 x 90	41-06-090
M 6 x 100	41-06-100

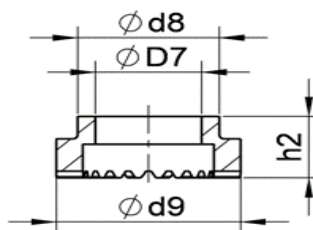
RF 6 \_\_\_\_\_ 71-00-006



	RF ø 6
$D_7$	6,2
$d_8$	9,5
$d_9$	12,2
$h_2$	~ 10

M 8 x 15	41-08-015
M 8 x 20	41-08-020
M 8 x 25	41-08-025
M 8 x 30	41-08-030
M 8 x 35	41-08-035
M 8 x 40	41-08-040
M 8 x 45	41-08-045
M 8 x 50	41-08-050
M 8 x 55	41-08-055
M 8 x 60	41-08-060
M 8 x 70	41-08-070
M 8 x 80	41-08-080
M 8 x 90	41-08-090
M 8 x 100	41-08-100

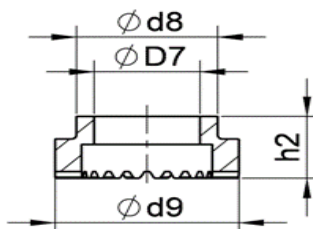
RF 8 \_\_\_\_\_ 71-00-008



	RF ø 8
$D_7$	8,2
$d_8$	12
$d_9$	15,3
$h_2$	~ 9

M 10 x 20	41-10-020
M 10 x 25	41-10-025
M 10 x 30	41-10-030
M 10 x 35	41-10-035
M 10 x 40	41-10-040
M 10 x 45	41-10-045
M 10 x 50	41-10-050
M 10 x 55	41-10-055
M 10 x 60	41-10-060
M 10 x 70	41-10-070
M 10 x 80	41-10-080
M 10 x 90	41-10-090
M 10 x 100	41-10-100

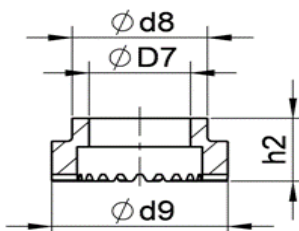
RF 10 \_\_\_\_\_ 71-00-010



	RF ø 10
$D_7$	10,2
$d_8$	15
$d_9$	18,5
$h_2$	~ 11,5

M 12 x 20	41-12-020
M 12 x 25	41-12-025
M 12 x 30	41-12-030
M 12 x 35	41-12-035
M 12 x 40	41-12-040
M 12 x 45	41-12-045
M 12 x 50	41-12-050
M 12 x 60	41-12-060
M 12 x 65	41-12-065
M 12 x 70	41-12-070
M 12 x 80	41-12-080
M 12 x 90	41-12-090
M 12 x 100	41-12-100

RF 12 \_\_\_\_\_ 71-00-012



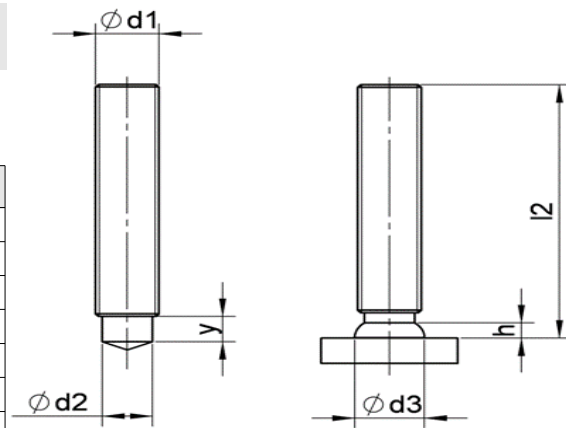
	RF ø 12
$D_7$	12,2
$d_8$	17
$d_9$	20
$h_2$	~ 13

# Svorník se závitem *typ MR (RD)*

druh materiálu:

- materiál : ocel 4.8 **St37-3k**

$d_1$	$I_2$	$y$	$d_2$	$d_3$	$h$
M6	15~100	4	4,7	6,7	2,5
M8	15~100	4	6,2	8,8	2,5
M10	15~100	5	7,9	11	3
M12	20~100	6	9,5	13	4
M16	25~100	7,5~11	13,2	18	5
M20	30~100	9~13	16,5	23	6
M24	50~100	12~15	20	28	7

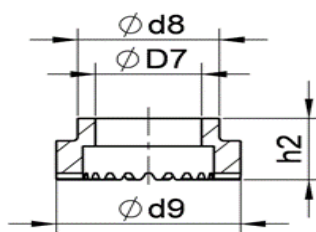


Rozměr \_\_\_\_\_ Objednáací číslo \_\_\_\_\_

Keramický kroužek \_\_\_\_\_

M 16 x 25	41-16-025
M 16 x 30	41-16-030
M 16 x 35	41-16-035
M 16 x 40	41-16-040
M 16 x 45	41-16-045
M 16 x 50	41-16-050
M 16 x 55	41-16-055
M 16 x 60	41-16-060
M 16 x 70	41-16-070
M 16 x 80	41-16-080
M 16 x 90	41-16-090
M 16 x 100	41-16-100

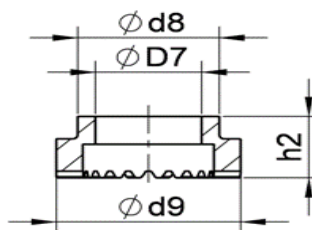
RF 16 \_\_\_\_\_ 71-00-016



	RF $\phi 16$
$D_7$	16,3
$d_8$	20,5
$d_9$	26,5
$h_2$	~ 15,3

M 20 x 25	41-20-025
M 20 x 30	41-20-030
M 20 x 35	41-20-035
M 20 x 40	41-20-040
M 20 x 45	41-20-045
M 20 x 50	41-20-050
M 20 x 55	41-20-055
M 20 x 60	41-20-060
M 20 x 70	41-20-070
M 20 x 80	41-20-080
M 20 x 90	41-20-090
M 20 x 100	41-20-100

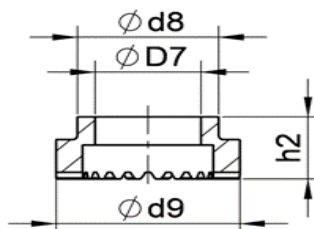
RF 20 \_\_\_\_\_ 71-00-020



	RF $\phi 20$
$D_7$	20,3
$d_8$	26,2
$d_9$	32
$h_2$	~ 22

M 24 x 50	41-24-050
M 24 x 55	41-24-055
M 24 x 60	41-24-060
M 24 x 70	41-24-070
M 24 x 80	41-24-080
M 24 x 90	41-24-090
M 24 x 100	41-24-100

PF 24 \_\_\_\_\_ 72-00-024



	PF $\phi 24$
$D_7$	22,8
$d_8$	30,7
$d_9$	38,5
$h_2$	~18,5

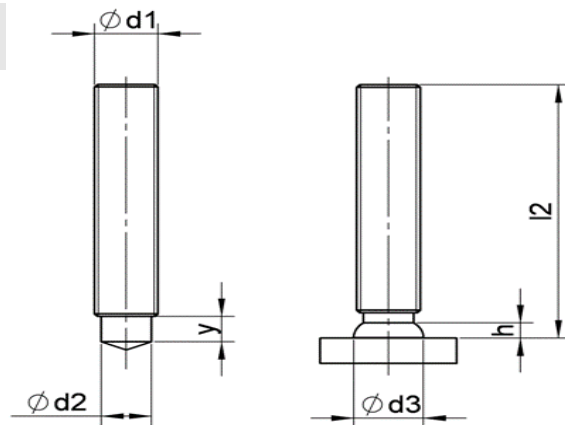


# Svorník se závitem *typ MR (RD)*

druh materiálu:

- materiál : nerez **A2-50**

$d_1$	$I_2$	$y$	$d_2$	$d_3$	$h$
M6	15~100	4	4,7	6,7	2,5
M8	15~100	4	6,2	8,8	2,5
M10	15~100	5	7,9	11	3
M12	20~100	6	9,5	13	4
M16	25~100	7,5~11	13,2	18	5
M20	30~100	9~13	16,5	23	6
M24	50~100	12~15	20	28	7

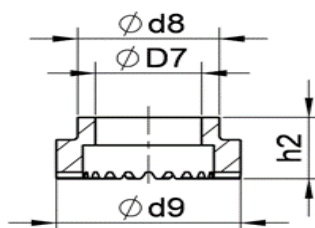


Rozměr \_\_\_\_\_ Objednáací číslo \_\_\_\_\_

Keramický kroužek \_\_\_\_\_

<b>M 6 x 15</b>	<b>42-06-015</b>
<b>M 6 x 20</b>	<b>42-06-020</b>
<b>M 6 x 25</b>	<b>42-06-025</b>
<b>M 6 x 30</b>	<b>42-06-030</b>
<b>M 6 x 35</b>	<b>42-06-035</b>
<b>M 6 x 40</b>	<b>42-06-040</b>
<b>M 6 x 45</b>	<b>42-06-045</b>
<b>M 6 x 50</b>	<b>42-06-050</b>
<b>M 6 x 55</b>	<b>42-06-055</b>
<b>M 6 x 60</b>	<b>42-06-060</b>
<b>M 6 x 70</b>	<b>42-06-070</b>
<b>M 6 x 80</b>	<b>42-06-080</b>
<b>M 6 x 90</b>	<b>42-06-090</b>
<b>M 6 x 100</b>	<b>42-06-100</b>

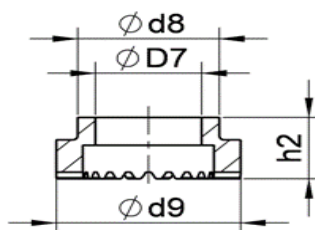
**RF 6** \_\_\_\_\_ **71-00-006**



	<b>RF ø 6</b>
$D_7$	6,2
$d_8$	9,5
$d_9$	12,2
$h_2$	~ 10

<b>M 8 x 15</b>	<b>42-08-015</b>
<b>M 8 x 20</b>	<b>42-08-020</b>
<b>M 8 x 25</b>	<b>42-08-025</b>
<b>M 8 x 30</b>	<b>42-08-030</b>
<b>M 8 x 35</b>	<b>42-08-035</b>
<b>M 8 x 40</b>	<b>42-08-040</b>
<b>M 8 x 45</b>	<b>42-08-045</b>
<b>M 8 x 50</b>	<b>42-08-050</b>
<b>M 8 x 55</b>	<b>42-08-055</b>
<b>M 8 x 60</b>	<b>42-08-060</b>
<b>M 8 x 70</b>	<b>42-08-070</b>
<b>M 8 x 80</b>	<b>42-08-080</b>
<b>M 8 x 90</b>	<b>42-08-090</b>
<b>M 8 x 100</b>	<b>42-08-100</b>

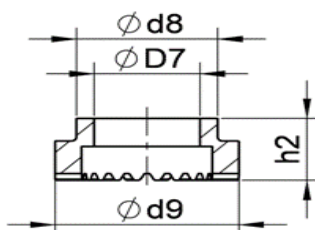
**RF 8** \_\_\_\_\_ **71-00-008**



	<b>RF ø 8</b>
$D_7$	8,2
$d_8$	12
$d_9$	15,3
$h_2$	~ 9

<b>M 10 x 20</b>	<b>42-10-020</b>
<b>M 10 x 25</b>	<b>42-10-025</b>
<b>M 10 x 30</b>	<b>42-10-030</b>
<b>M 10 x 35</b>	<b>42-10-035</b>
<b>M 10 x 40</b>	<b>42-10-040</b>
<b>M 10 x 45</b>	<b>42-10-045</b>
<b>M 10 x 50</b>	<b>42-10-050</b>
<b>M 10 x 55</b>	<b>42-10-055</b>
<b>M 10 x 60</b>	<b>42-10-060</b>
<b>M 10 x 70</b>	<b>42-10-070</b>
<b>M 10 x 80</b>	<b>42-10-080</b>
<b>M 10 x 90</b>	<b>42-10-090</b>
<b>M 10 x 100</b>	<b>42-10-100</b>

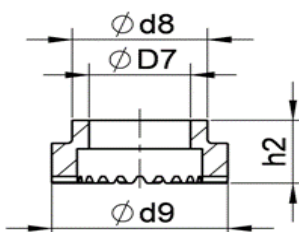
**RF 10** \_\_\_\_\_ **71-00-010**



	<b>RF ø 10</b>
$D_7$	10,2
$d_8$	15
$d_9$	18,5
$h_2$	~ 11,5

<b>M 12 x 20</b>	<b>42-12-020</b>
<b>M 12 x 25</b>	<b>42-12-025</b>
<b>M 12 x 30</b>	<b>42-12-030</b>
<b>M 12 x 35</b>	<b>42-12-035</b>
<b>M 12 x 40</b>	<b>42-12-040</b>
<b>M 12 x 45</b>	<b>42-12-045</b>
<b>M 12 x 50</b>	<b>42-12-050</b>
<b>M 12 x 60</b>	<b>42-12-060</b>
<b>M 12 x 70</b>	<b>42-12-070</b>
<b>M 12 x 80</b>	<b>42-12-080</b>
<b>M 12 x 90</b>	<b>42-12-090</b>
<b>M 12 x 100</b>	<b>42-12-100</b>

**RF 12** \_\_\_\_\_ **71-00-012**



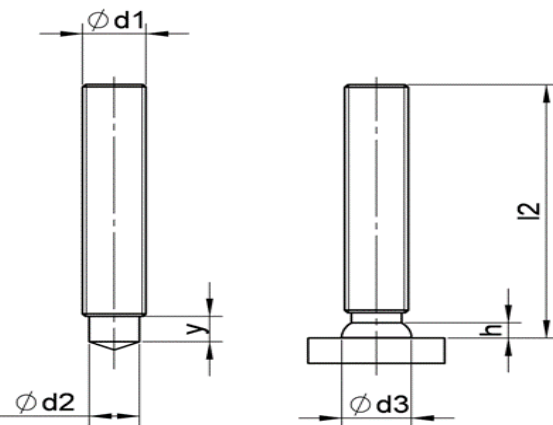
	<b>RF ø 12</b>
$D_7$	12,2
$d_8$	17
$d_9$	20
$h_2$	~ 13

# Svorník se závitem *typ MR (RD)*

druh materiálu:

- materiál : nerez **A2-50**

$d_1$	$I_2$	$y$	$d_2$	$d_3$	$h$
M6	15~100	4	4,7	6,7	2,5
M8	15~100	4	6,2	8,8	2,5
M10	15~100	5	7,9	11	3
M12	20~100	6	9,5	13	4
M16	25~100	7,5~11	13,2	18	5
M20	30~100	9~13	16,5	23	6
M24	50~100	12~15	20	28	7

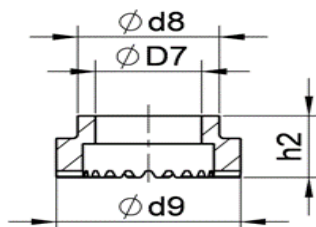


Rozměr \_\_\_\_\_ Objednáací číslo \_\_\_\_\_

Keramický kroužek \_\_\_\_\_

M 16 x 25	42-16-025
M 16 x 30	42-16-030
M 16 x 35	42-16-035
M 16 x 40	42-16-040
M 16 x 45	42-16-045
M 16 x 50	42-16-050
M 16 x 55	42-16-055
M 16 x 60	42-16-060
M 16 x 70	42-16-070
M 16 x 80	42-16-080
M 16 x 90	42-16-090
M 16 x 100	42-16-100

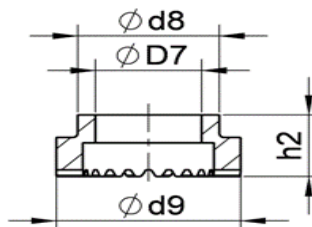
RF 16 \_\_\_\_\_ 71-00-016



	RF $\phi 16$
$D_7$	16,3
$d_8$	20,5
$d_9$	26,5
$h_2$	~ 15,3

M 20 x 25	42-20-025
M 20 x 30	42-20-030
M 20 x 35	42-20-035
M 20 x 40	42-20-040
M 20 x 45	42-20-045
M 20 x 50	42-20-050
M 20 x 55	42-20-055
M 20 x 60	42-20-060
M 20 x 70	42-20-070
M 20 x 80	42-20-080
M 20 x 90	42-20-090
M 20 x 100	42-20-100

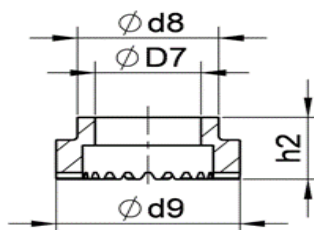
RF 20 \_\_\_\_\_ 71-00-020



	RF $\phi 20$
$D_7$	20,3
$d_8$	26,2
$d_9$	32
$h_2$	~ 22

M 24 x 50	42-24-050
M 24 x 55	42-24-055
M 24 x 60	42-24-060
M 24 x 70	42-24-070
M 24 x 80	42-24-080
M 24 x 90	42-24-090
M 24 x 100	42-24-100

PF 24 \_\_\_\_\_ 72-00-024



	PF $\phi 24$
$D_7$	22,8
$d_8$	30,7
$d_9$	38,5
$h_2$	~18,5

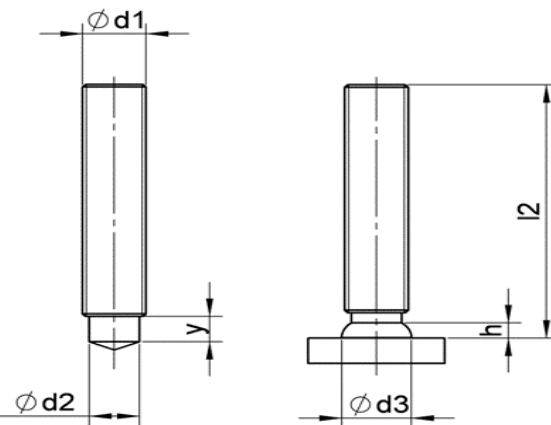


# Svorník se závitem *typ MR (RD)*

druh materiálu:

- materiál : nerez **1.4571**

$d_1$	$I_2$	$y$	$d_2$	$d_3$	$h$
M6	15~100	4	4,7	6,7	2,5
M8	15~100	4	6,2	8,8	2,5
M10	15~100	5	7,9	11	3
M12	20~100	6	9,5	13	4
M16	25~100	7,5~11	13,2	18	5
M20	30~100	9~13	16,5	23	6
M24	50~100	12~15	20	28	7

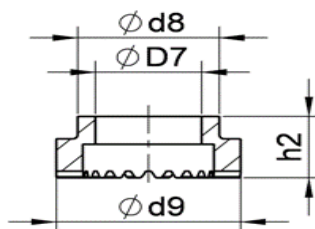


Rozměr \_\_\_\_\_ Objednáací číslo \_\_\_\_\_

Keramický kroužek \_\_\_\_\_

M 6 x 15	43-06-015
M 6 x 20	43-06-020
M 6 x 25	43-06-025
M 6 x 30	43-06-030
M 6 x 35	43-06-035
M 6 x 40	43-06-040
M 6 x 45	43-06-045
M 6 x 50	43-06-050
M 6 x 55	43-06-055
M 6 x 60	43-06-060
M 6 x 70	43-06-070
M 6 x 80	43-06-080
M 6 x 90	43-06-090
M 6 x 100	43-06-100

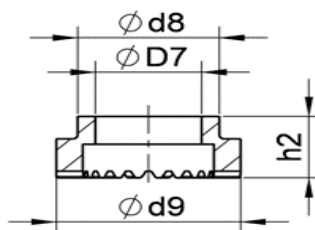
**RF 6** \_\_\_\_\_ **71-00-006**



	RF ø 6
$D_7$	6,2
$d_8$	9,5
$d_9$	12,2
$h_2$	~ 10

M 8 x 15	43-08-015
M 8 x 20	43-08-020
M 8 x 25	43-08-025
M 8 x 30	43-08-030
M 8 x 35	43-08-035
M 8 x 40	43-08-040
M 8 x 45	43-08-045
M 8 x 50	43-08-050
M 8 x 55	43-08-055
M 8 x 60	43-08-060
M 8 x 70	43-08-070
M 8 x 80	43-08-080
M 8 x 90	43-08-090
M 8 x 100	43-08-100

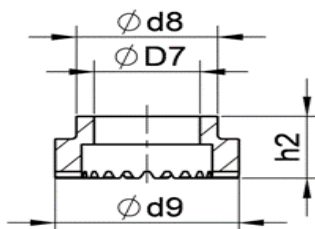
**RF 8** \_\_\_\_\_ **71-00-008**



	RF ø 8
$D_7$	8,2
$d_8$	12
$d_9$	15,3
$h_2$	~ 9

M 10 x 20	43-10-020
M 10 x 25	43-10-025
M 10 x 30	43-10-030
M 10 x 35	43-10-035
M 10 x 40	43-10-040
M 10 x 45	43-10-045
M 10 x 50	43-10-050
M 10 x 55	43-10-055
M 10 x 60	43-10-060
M 10 x 70	43-10-070
M 10 x 80	43-10-080
M 10 x 90	43-10-090
M 10 x 100	43-10-100

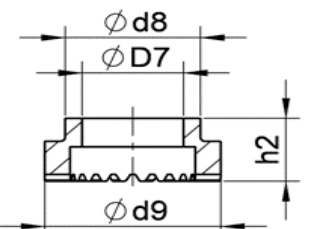
**RF 10** \_\_\_\_\_ **71-00-010**



	RF ø 10
$D_7$	10,2
$d_8$	15
$d_9$	18,5
$h_2$	~ 11,5

M 12 x 20	43-12-020
M 12 x 25	43-12-025
M 12 x 30	43-12-030
M 12 x 35	43-12-035
M 12 x 40	43-12-040
M 12 x 45	43-12-045
M 12 x 50	43-12-050
M 12 x 60	43-12-060
M 12 x 70	43-12-070
M 12 x 80	43-12-080
M 12 x 90	43-12-090
M 12 x 100	43-12-100

**RF 12** \_\_\_\_\_ **71-00-012**



	RF ø 12
$D_7$	12,2
$d_8$	17
$d_9$	20
$h_2$	~ 13



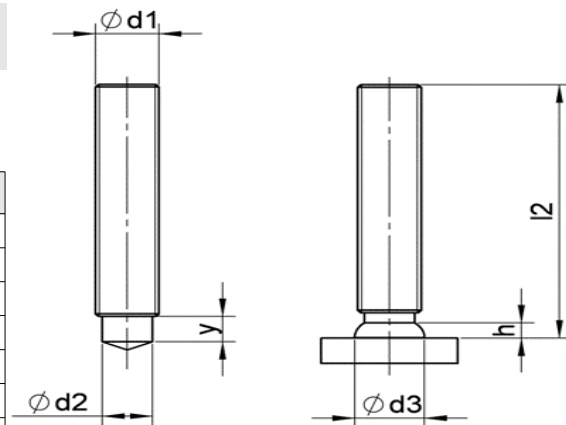


# Svorník se závitem *typ MR (RD)*

druh materiálu:

- materiál : nerez **1.4571**

$d_1$	$I_2$	$y$	$d_2$	$d_3$	$h$
M6	15~100	4	4,7	6,7	2,5
M8	15~100	4	6,2	8,8	2,5
M10	15~100	5	7,9	11	3
M12	20~100	6	9,5	13	4
M16	25~100	7,5~11	13,2	18	5
M20	30~100	9~13	16,5	23	6
M24	50~100	12~15	20	28	7

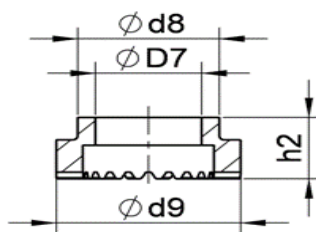


Rozměr \_\_\_\_\_ Objednáací číslo \_\_\_\_\_

Keramický kroužek \_\_\_\_\_

M 16 x 25	43-16-025
M 16 x 30	43-16-030
M 16 x 35	43-16-035
M 16 x 40	43-16-040
M 16 x 45	43-16-045
M 16 x 50	43-16-050
M 16 x 55	43-16-055
M 16 x 60	43-16-060
M 16 x 70	43-16-070
M 16 x 80	43-16-080
M 16 x 90	43-16-090
M 16 x 100	43-16-100

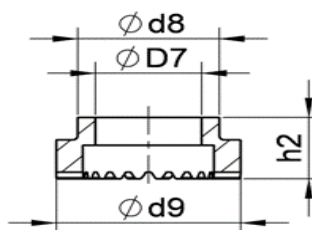
**RF 16** \_\_\_\_\_ **71-00-016**



	RF $\phi 16$
$D_7$	16,3
$d_8$	20,5
$d_9$	26,5
$h_2$	~ 15,3

M 20 x 25	43-20-025
M 20 x 30	43-20-030
M 20 x 35	43-20-035
M 20 x 40	43-20-040
M 20 x 45	43-20-045
M 20 x 50	43-20-050
M 20 x 55	43-20-055
M 20 x 60	43-20-060
M 20 x 70	43-20-070
M 20 x 80	43-20-080
M 20 x 90	43-20-090
M 20 x 100	43-20-100

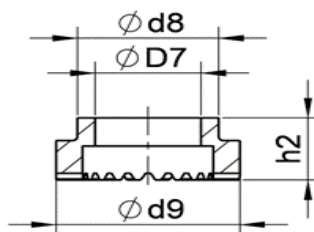
**RF 20** \_\_\_\_\_ **71-00-020**



	RF $\phi 20$
$D_7$	20,3
$d_8$	26,2
$d_9$	32
$h_2$	~ 22

M 24 x 50	43-24-050
M 24 x 55	43-24-055
M 24 x 60	43-24-060
M 24 x 70	43-24-070
M 24 x 80	43-24-080
M 24 x 90	43-24-090
M 24 x 100	43-24-100

**PF 24** \_\_\_\_\_ **72-00-024**



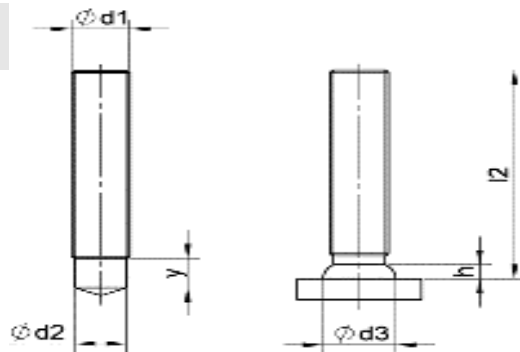
	PF $\phi 24$
$D_7$	22,8
$d_8$	30,7
$d_9$	38,5
$h_2$	~ 18,5

# Svorník se závitem *typ MPF*

druh materiálu:

- materiál : ocel **St37-3k**

$d_1$	$I_2$	$y$	$d_2$	$d_3$	$h$
M6	15~100	3	5,3	8,5	4
M8	15~100	6	7,1	10	3
M10	15~100	7	8,95	12,5	3,4
M12	20~100	8	10,8	14,5	4,2



Rozměr \_\_\_\_\_ Objednáací číslo \_\_\_\_\_

<b>MPF 6 x 15</b>	<b>46-06-015-MPF</b>
<b>MPF 6 x 20</b>	<b>46-06-020-MPF</b>
<b>MPF 6 x 25</b>	<b>46-06-025-MPF</b>
<b>MPF 6 x 30</b>	<b>46-06-030-MPF</b>
<b>MPF 6 x 35</b>	<b>46-06-035-MPF</b>
<b>MPF 6 x 40</b>	<b>46-06-040-MPF</b>
<b>MPF 6 x 45</b>	<b>46-06-045-MPF</b>
<b>MPF 6 x 50</b>	<b>46-06-050-MPF</b>
<b>MPF 6 x 55</b>	<b>46-06-055-MPF</b>
<b>MPF 6 x 60</b>	<b>46-06-060-MPF</b>
<b>MPF 6 x 70</b>	<b>46-06-070-MPF</b>
<b>MPF 6 x 80</b>	<b>46-06-080-MPF</b>
<b>MPF 6 x 90</b>	<b>46-06-090-MPF</b>
<b>MPF 6 x 100</b>	<b>46-06-100-MPF</b>

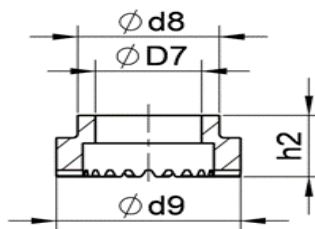
<b>MPF 8 x 15</b>	<b>46-08-015-MPF</b>
<b>MPF 8 x 20</b>	<b>46-08-020-MPF</b>
<b>MPF 8 x 25</b>	<b>46-08-025-MPF</b>
<b>MPF 8 x 30</b>	<b>46-08-030-MPF</b>
<b>MPF 8 x 35</b>	<b>46-08-035-MPF</b>
<b>MPF 8 x 40</b>	<b>46-08-040-MPF</b>
<b>MPF 8 x 45</b>	<b>46-08-045-MPF</b>
<b>MPF 8 x 50</b>	<b>46-08-050-MPF</b>
<b>MPF 8 x 55</b>	<b>46-08-055-MPF</b>
<b>MPF 8 x 60</b>	<b>46-08-060-MPF</b>
<b>MPF 8 x 70</b>	<b>46-08-070-MPF</b>
<b>MPF 8 x 80</b>	<b>46-08-080-MPF</b>
<b>MPF 8 x 90</b>	<b>46-08-090-MPF</b>
<b>MPF 8 x 100</b>	<b>46-08-100-MPF</b>

<b>MPF 10 x 15</b>	<b>46-10-015-MPF</b>
<b>MPF 10 x 20</b>	<b>46-10-020-MPF</b>
<b>MPF 10 x 25</b>	<b>46-10-025-MPF</b>
<b>MPF 10 x 30</b>	<b>46-10-030-MPF</b>
<b>MPF 10 x 35</b>	<b>46-10-035-MPF</b>
<b>MPF 10 x 40</b>	<b>46-10-040-MPF</b>
<b>MPF 10 x 45</b>	<b>46-10-045-MPF</b>
<b>MPF 10 x 50</b>	<b>46-10-050-MPF</b>
<b>MPF 10 x 55</b>	<b>46-10-055-MPF</b>
<b>MPF 10 x 60</b>	<b>46-10-060-MPF</b>
<b>MPF 10 x 70</b>	<b>46-10-070-MPF</b>
<b>MPF 10 x 80</b>	<b>46-10-080-MPF</b>
<b>MPF 10 x 90</b>	<b>46-10-090-MPF</b>
<b>MPF 10 x 100</b>	<b>46-10-100-MPF</b>

<b>MPF 12 x 20</b>	<b>46-12-020-MPF</b>
<b>MPF 12 x 25</b>	<b>46-12-025-MPF</b>
<b>MPF 12 x 30</b>	<b>46-12-030-MPF</b>
<b>MPF 12 x 35</b>	<b>46-12-035-MPF</b>
<b>MPF 12 x 40</b>	<b>46-12-040-MPF</b>
<b>MPF 12 x 45</b>	<b>46-12-045-MPF</b>
<b>MPF 12 x 50</b>	<b>46-12-050-MPF</b>
<b>MPF 12 x 55</b>	<b>46-12-055-MPF</b>
<b>MPF 12 x 60</b>	<b>46-12-060-MPF</b>
<b>MPF 12 x 70</b>	<b>46-12-070-MPF</b>
<b>MPF 12 x 80</b>	<b>46-12-080-MPF</b>
<b>MPF 12 x 90</b>	<b>46-12-090-MPF</b>
<b>MPF 12 x 100</b>	<b>46-12-100-MPF</b>

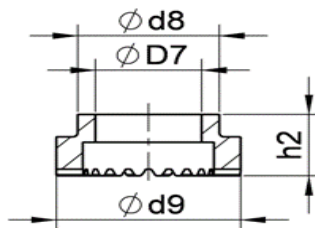
Keramický kroužek \_\_\_\_\_

**UF - 6** \_\_\_\_\_ **73-00-006**



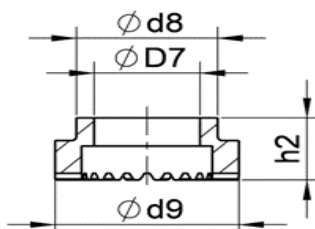
	<b>UF ø 6</b>
$D_7$	6,2
$d_8$	9,5
$d_9$	11,5
$h_2$	~8,7

**KSP-F 8** \_\_\_\_\_ **72-00-008-F**



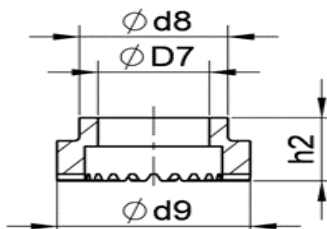
	<b>KSP-F ø 8</b>
$D_7$	7,8
$d_8$	14,6
$d_9$	17,6
$h_2$	~5

**KSP-F 10** \_\_\_\_\_ **72-00-010-F**



	<b>KSP-F ø 10</b>
$D_7$	9,6
$d_8$	16,5
$d_9$	20
$h_2$	~5,5

**KSP-F 12** \_\_\_\_\_ **72-00-012-F**



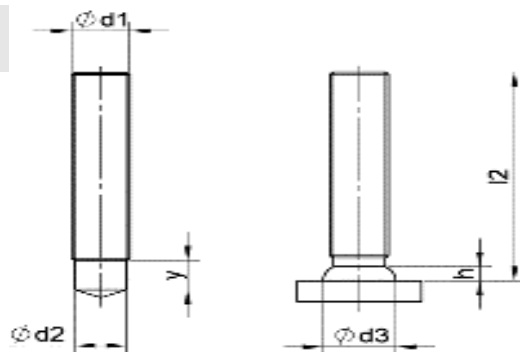
	<b>KSP-F ø 12</b>
$D_7$	11
$d_8$	20
$d_9$	23,4
$h_2$	~5,7

# Svorník se závitem *typ MPF*

druh materiálu:

- materiál : nerez **A2-50**

$d_1$	$I_2$	$y$	$d_2$	$d_3$	$h$
M6	15~100	3	5,3	8,5	4
M8	15~100	6	7,1	10	3
M10	15~100	7	8,95	12,5	3,4
M12	20~100	8	10,8	14,5	4,2

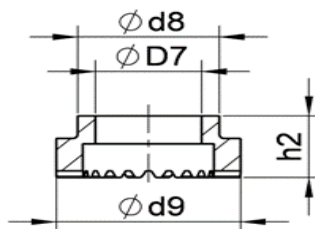


Rozměr \_\_\_\_\_ Objednáací číslo \_\_\_\_\_

Keramický kroužek \_\_\_\_\_

<b>MPF 6 x 15</b>	<b>47-06-015-MPF</b>
<b>MPF 6 x 20</b>	<b>47-06-020-MPF</b>
<b>MPF 6 x 25</b>	<b>47-06-025-MPF</b>
<b>MPF 6 x 30</b>	<b>47-06-030-MPF</b>
<b>MPF 6 x 35</b>	<b>47-06-035-MPF</b>
<b>MPF 6 x 40</b>	<b>47-06-040-MPF</b>
<b>MPF 6 x 45</b>	<b>47-06-045-MPF</b>
<b>MPF 6 x 50</b>	<b>47-06-050-MPF</b>
<b>MPF 6 x 55</b>	<b>47-06-055-MPF</b>
<b>MPF 6 x 60</b>	<b>47-06-060-MPF</b>
<b>MPF 6 x 70</b>	<b>47-06-070-MPF</b>
<b>MPF 6 x 80</b>	<b>47-06-080-MPF</b>
<b>MPF 6 x 90</b>	<b>47-06-090-MPF</b>
<b>MPF 6 x 100</b>	<b>47-06-100-MPF</b>

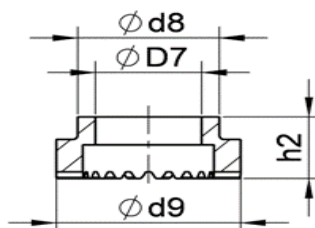
**UF - 6** \_\_\_\_\_ **73-00-006**



	<b>UF ø 6</b>
$D_7$	6,2
$d_8$	9,5
$d_9$	11,5
$h_2$	~8,7

<b>MPF 8 x 15</b>	<b>47-08-015-MPF</b>
<b>MPF 8 x 20</b>	<b>47-08-020-MPF</b>
<b>MPF 8 x 25</b>	<b>47-08-025-MPF</b>
<b>MPF 8 x 30</b>	<b>47-08-030-MPF</b>
<b>MPF 8 x 35</b>	<b>47-08-035-MPF</b>
<b>MPF 8 x 40</b>	<b>47-08-040-MPF</b>
<b>MPF 8 x 45</b>	<b>47-08-045-MPF</b>
<b>MPF 8 x 50</b>	<b>47-08-050-MPF</b>
<b>MPF 8 x 55</b>	<b>47-08-055-MPF</b>
<b>MPF 8 x 60</b>	<b>47-08-060-MPF</b>
<b>MPF 8 x 70</b>	<b>47-08-070-MPF</b>
<b>MPF 8 x 80</b>	<b>47-08-080-MPF</b>
<b>MPF 8 x 90</b>	<b>47-08-090-MPF</b>
<b>MPF 8 x 100</b>	<b>47-08-100-MPF</b>

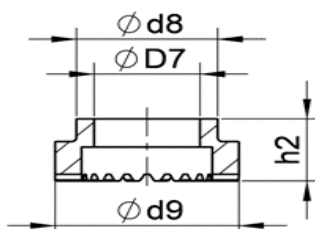
**KSP-F 8** \_\_\_\_\_ **72-00-008-F**



	<b>KSP-F ø 8</b>
$D_7$	7,8
$d_8$	14,6
$d_9$	17,6
$h_2$	~5

<b>MPF 10 x 15</b>	<b>47-10-015-MPF</b>
<b>MPF 10 x 20</b>	<b>47-10-020-MPF</b>
<b>MPF 10 x 25</b>	<b>47-10-025-MPF</b>
<b>MPF 10 x 30</b>	<b>47-10-030-MPF</b>
<b>MPF 10 x 35</b>	<b>47-10-035-MPF</b>
<b>MPF 10 x 40</b>	<b>47-10-040-MPF</b>
<b>MPF 10 x 45</b>	<b>47-10-045-MPF</b>
<b>MPF 10 x 50</b>	<b>47-10-050-MPF</b>
<b>MPF 10 x 55</b>	<b>47-10-055-MPF</b>
<b>MPF 10 x 60</b>	<b>47-10-060-MPF</b>
<b>MPF 10 x 70</b>	<b>47-10-070-MPF</b>
<b>MPF 10 x 80</b>	<b>47-10-080-MPF</b>
<b>MPF 10 x 90</b>	<b>47-10-090-MPF</b>
<b>MPF 10 x 100</b>	<b>47-10-100-MPF</b>

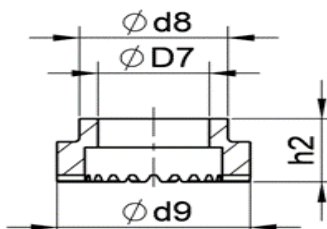
**KSP-F 10** \_\_\_\_\_ **72-00-010-F**



	<b>KSP-F ø 10</b>
$D_7$	9,6
$d_8$	16,5
$d_9$	20
$h_2$	~5,5

<b>MPF 12 x 20</b>	<b>47-12-020-MPF</b>
<b>MPF 12 x 25</b>	<b>47-12-025-MPF</b>
<b>MPF 12 x 30</b>	<b>47-12-030-MPF</b>
<b>MPF 12 x 35</b>	<b>47-12-035-MPF</b>
<b>MPF 12 x 40</b>	<b>47-12-040-MPF</b>
<b>MPF 12 x 45</b>	<b>47-12-045-MPF</b>
<b>MPF 12 x 50</b>	<b>47-12-050-MPF</b>
<b>MPF 12 x 55</b>	<b>47-12-055-MPF</b>
<b>MPF 12 x 60</b>	<b>47-12-060-MPF</b>
<b>MPF 12 x 70</b>	<b>47-12-070-MPF</b>
<b>MPF 12 x 80</b>	<b>47-12-080-MPF</b>
<b>MPF 12 x 90</b>	<b>47-12-090-MPF</b>
<b>MPF 12 x 100</b>	<b>47-12-100-MPF</b>

**KSP-F 12** \_\_\_\_\_ **72-00-012-F**



	<b>KSP-F ø 12</b>
$D_7$	11
$d_8$	20
$d_9$	23,4
$h_2$	~5,7

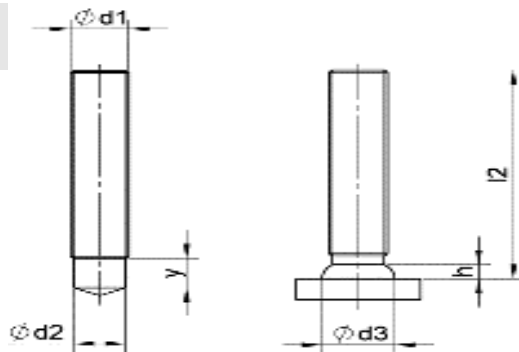


# Svorník se závitem *typ MPF*

druh materiálu:

- materiál : nerez **1.4571**

$d_1$	$l_2$	$y$	$d_2$	$d_3$	$h$
M6	15~100	3	5,3	8,5	4
M8	15~100	6	7,1	10	3
M10	15~100	7	8,95	12,5	3,4
M12	20~100	8	10,8	14,5	4,2



Rozměr \_\_\_\_\_ Objednáací číslo \_\_\_\_\_

<b>MPF 6 x 15</b>	<b>48-06-015-MPF</b>
<b>MPF 6 x 20</b>	<b>48-06-020-MPF</b>
<b>MPF 6 x 25</b>	<b>48-06-025-MPF</b>
<b>MPF 6 x 30</b>	<b>48-06-030-MPF</b>
<b>MPF 6 x 35</b>	<b>48-06-035-MPF</b>
<b>MPF 6 x 40</b>	<b>48-06-040-MPF</b>
<b>MPF 6 x 45</b>	<b>48-06-045-MPF</b>
<b>MPF 6 x 50</b>	<b>48-06-050-MPF</b>
<b>MPF 6 x 55</b>	<b>48-06-055-MPF</b>
<b>MPF 6 x 60</b>	<b>48-06-060-MPF</b>
<b>MPF 6 x 70</b>	<b>48-06-070-MPF</b>
<b>MPF 6 x 80</b>	<b>48-06-080-MPF</b>
<b>MPF 6 x 90</b>	<b>48-06-090-MPF</b>
<b>MPF 6 x 100</b>	<b>48-06-100-MPF</b>

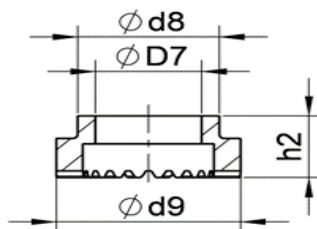
<b>MPF 8 x 15</b>	<b>48-08-015-MPF</b>
<b>MPF 8 x 20</b>	<b>48-08-020-MPF</b>
<b>MPF 8 x 25</b>	<b>48-08-025-MPF</b>
<b>MPF 8 x 30</b>	<b>48-08-030-MPF</b>
<b>MPF 8 x 35</b>	<b>48-08-035-MPF</b>
<b>MPF 8 x 40</b>	<b>48-08-040-MPF</b>
<b>MPF 8 x 45</b>	<b>48-08-045-MPF</b>
<b>MPF 8 x 50</b>	<b>48-08-050-MPF</b>
<b>MPF 8 x 55</b>	<b>48-08-055-MPF</b>
<b>MPF 8 x 60</b>	<b>48-08-060-MPF</b>
<b>MPF 8 x 70</b>	<b>48-08-070-MPF</b>
<b>MPF 8 x 80</b>	<b>48-08-080-MPF</b>
<b>MPF 8 x 90</b>	<b>48-08-090-MPF</b>
<b>MPF 8 x 100</b>	<b>48-08-100-MPF</b>

<b>MPF 10 x 15</b>	<b>48-10-015-MPF</b>
<b>MPF 10 x 20</b>	<b>48-10-020-MPF</b>
<b>MPF 10 x 25</b>	<b>48-10-025-MPF</b>
<b>MPF 10 x 30</b>	<b>48-10-030-MPF</b>
<b>MPF 10 x 35</b>	<b>48-10-035-MPF</b>
<b>MPF 10 x 40</b>	<b>48-10-040-MPF</b>
<b>MPF 10 x 45</b>	<b>48-10-045-MPF</b>
<b>MPF 10 x 50</b>	<b>48-10-050-MPF</b>
<b>MPF 10 x 55</b>	<b>48-10-055-MPF</b>
<b>MPF 10 x 60</b>	<b>48-10-060-MPF</b>
<b>MPF 10 x 70</b>	<b>48-10-070-MPF</b>
<b>MPF 10 x 80</b>	<b>48-10-080-MPF</b>
<b>MPF 10 x 90</b>	<b>48-10-090-MPF</b>
<b>MPF 10 x 100</b>	<b>48-10-100-MPF</b>

<b>MPF 12 x 20</b>	<b>48-12-020-MPF</b>
<b>MPF 12 x 25</b>	<b>48-12-025-MPF</b>
<b>MPF 12 x 30</b>	<b>48-12-030-MPF</b>
<b>MPF 12 x 35</b>	<b>48-12-035-MPF</b>
<b>MPF 12 x 40</b>	<b>48-12-040-MPF</b>
<b>MPF 12 x 45</b>	<b>48-12-045-MPF</b>
<b>MPF 12 x 50</b>	<b>48-12-050-MPF</b>
<b>MPF 12 x 55</b>	<b>48-12-055-MPF</b>
<b>MPF 12 x 60</b>	<b>48-12-060-MPF</b>
<b>MPF 12 x 70</b>	<b>48-12-070-MPF</b>
<b>MPF 12 x 80</b>	<b>48-12-080-MPF</b>
<b>MPF 12 x 90</b>	<b>48-12-090-MPF</b>
<b>MPF 12 x 100</b>	<b>48-12-100-MPF</b>

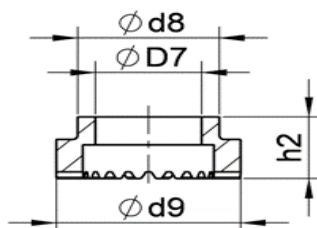
Keramický kroužek \_\_\_\_\_

**UF - 6** \_\_\_\_\_ **73-00-006**



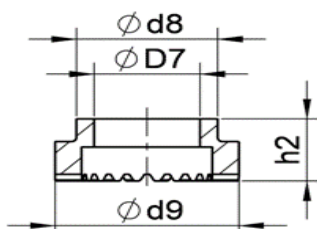
	<b>UF ø 6</b>
$D_7$	6,2
$d_8$	9,5
$d_9$	11,5
$h_2$	~8,7

**KSP-F 8** \_\_\_\_\_ **72-00-008-F**



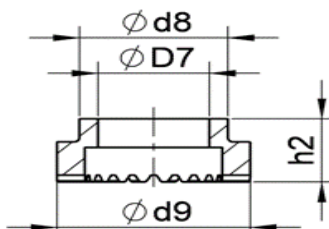
	<b>KSP-F ø 8</b>
$D_7$	7,8
$d_8$	14,6
$d_9$	17,6
$h_2$	~5

**KSP-F 10** \_\_\_\_\_ **72-00-010-F**



	<b>KSP-F ø 10</b>
$D_7$	9,6
$d_8$	16,5
$d_9$	20
$h_2$	~5,5

**KSP-F 12** \_\_\_\_\_ **72-00-012-F**



	<b>KSP-F ø 12</b>
$D_7$	11
$d_8$	20
$d_9$	23,4
$h_2$	~5,7

# Svorník se závitem *typ MP ( PD )*

druh materiálu:

- materiál : ocel 4.8 **St37-3k**

$d_1$	$I_2$	$b$	$y$	$d_2$	$d_3$	$h$
M6	15~160	dle poptání	9	5,3	8,5	3,5
M8	15~160	dle poptání	9	7,1	10	3,5
M10	15~160	dle poptání	9,5	8,95	12,5	4
M12	15~160	dle poptání	11,5	10,8	15,5	4,5

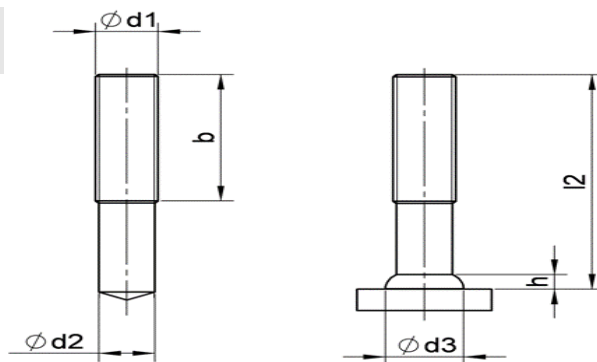
Rozměr \_\_\_\_\_ Objednací číslo \_\_\_\_\_

M 6 x 15	46-06-015
M 6 x 20	46-06-020
M 6 x 25	46-06-025
M 6 x 30	46-06-030
M 6 x 35	46-06-035
M 6 x 40	46-06-040
M 6 x 45	46-06-045
M 6 x 50	46-06-050
M 6 x 55	46-06-055
M 6 x 60	46-06-060
M 6 x 70	46-06-070
M 6 x 80	46-06-080
M 6 x 100	46-06-100
M 6 x 140	46-06-140
M 6 x 150	46-06-150
M 6 x 160	46-06-160

M 8 x 15	46-08-015
M 8 x 20	46-08-020
M 8 x 25	46-08-025
M 8 x 30	46-08-030
M 8 x 35	46-08-035
M 8 x 40	46-08-040
M 8 x 45	46-08-045
M 8 x 50	46-08-050
M 8 x 55	46-08-055
M 8 x 60	46-08-060
M 8 x 70	46-08-070
M 8 x 80	46-08-080
M 8 x 100	46-08-100
M 8 x 140	46-08-140
M 8 x 150	46-08-150
M 8 x 160	46-08-160

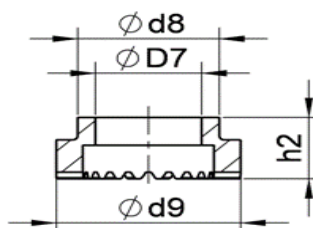
M 10 x 15	46-10-015
M 10 x 20	46-10-020
M 10 x 25	46-10-025
M 10 x 30	46-10-030
M 10 x 35	46-10-035
M 10 x 40	46-10-040
M 10 x 45	46-10-045
M 10 x 50	46-10-050
M 10 x 55	46-10-055
M 10 x 60	46-10-060
M 10 x 70	46-10-070
M 10 x 80	46-10-080
M 10 x 100	46-10-100
M 10 x 140	46-10-140
M 10 x 160	46-10-160

M 12 x 15	46-12-015
M 12 x 20	46-12-020
M 12 x 25	46-12-025
M 12 x 30	46-12-030
M 12 x 35	46-12-035
M 12 x 40	46-12-040
M 12 x 30	46-12-030
M 12 x 35	46-12-035
M 12 x 40	46-12-040



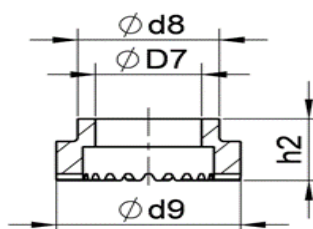
Keramický kroužek \_\_\_\_\_

PF 6 \_\_\_\_\_ 72-00-006



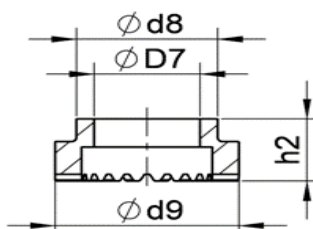
	PF ø 6
$D_7$	5,6
$d_8$	9,5
$d_9$	11,5
$h_2$	~6,5

PF 8 \_\_\_\_\_ 72-00-008



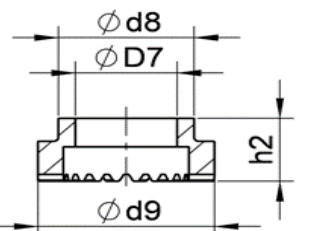
	PF ø 8
$D_7$	7,4
$d_8$	11,5
$d_9$	15
$h_2$	~6,5

PF 10 \_\_\_\_\_ 72-00-010



	PF ø 10
$D_7$	9,2
$d_8$	15
$d_9$	17,8
$h_2$	~6,5

PF 12 \_\_\_\_\_ 71-00-012



	PF ø 12
$D_7$	11,1
$d_8$	16,5
$d_9$	20
$h_2$	~ 9

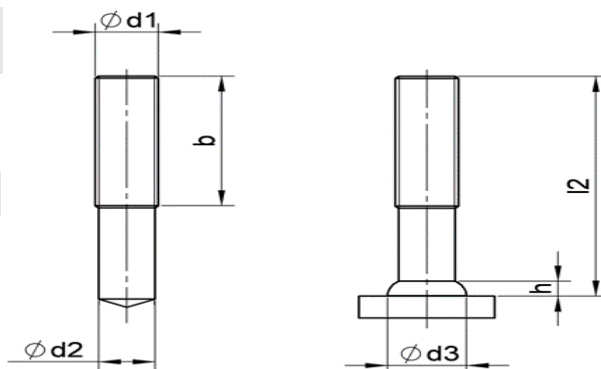


# Svorník se závitem *typ MP ( PD )*

druh materiálu:

- materiál : ocel 4.8 **St37-3k**

$d_1$	$I_2$	$b$	$y$	$d_2$	$d_3$	$h$
M12	15~160	dle poptání	11,5	10,8	15,5	4,5
M16	15~160	dle poptání	13,5	14,6	19,5	6
M20	15~160	dle poptání	15,5	18,3	24,5	7
M24	15~160	dle poptání	20	22	30	10



Rozměr \_\_\_\_\_ Objednáací číslo \_\_\_\_\_

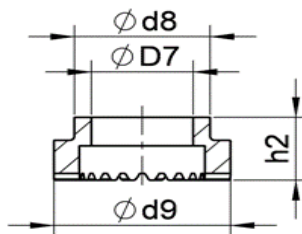
M 12 x 45	46-12-045
M 12 x 50	46-12-050
M 12 x 55	46-12-055
M 12 x 60	46-12-060
M 12 x 65	46-12-065
M 12 x 70	46-12-070
M 12 x 80	46-12-080
M 12 x 100	46-12-100
M 12 x 140	46-12-140
M 12 x 150	46-12-150
M 12 x 160	46-12-160

M 16 x 15	46-16-015
M 16 x 20	46-16-020
M 16 x 25	46-16-025
M 16 x 30	46-16-030
M 16 x 35	46-16-035
M 16 x 40	46-16-040
M 16 x 45	46-16-045
M 16 x 50	46-16-050
M 16 x 55	46-16-055
M 16 x 60	46-16-060
M 16 x 70	46-16-070
M 16 x 80	46-16-080
M 16 x 100	46-16-100
M 16 x 140	46-16-140
M 16 x 150	46-16-150
M 16 x 160	46-16-160

M 20 x 15	46-20-015
M 20 x 20	46-20-020
M 20 x 25	46-20-025
M 20 x 30	46-20-030
M 20 x 35	46-20-035
M 20 x 40	46-20-040
M 20 x 45	46-20-045
M 20 x 50	46-20-050
M 20 x 55	46-20-055
M 20 x 60	46-20-060
M 20 x 70	46-20-070
M 20 x 80	46-20-080
M 20 x 100	46-20-100
M 20 x 140	46-20-140
M 20 x 160	46-20-160

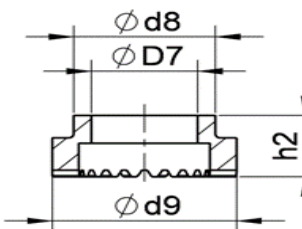
M 24 x 25	46-24-025
M 24 x 30	46-24-030
M 24 x 35	46-24-035
M 24 x 40	46-24-040
M 24 x 45	46-24-045
M 24 x 50	46-24-050
M 24 x 55	46-24-055
M 24 x 60	46-24-060
M 24 x 70	46-24-070
M 24 x 80	46-24-080
M 24 x 100	46-24-100
M 24 x 140	46-24-140
M 24 x 150	46-24-150
M 24 x 160	46-24-160

Keramický kroužek  
PF 12 72-00-012



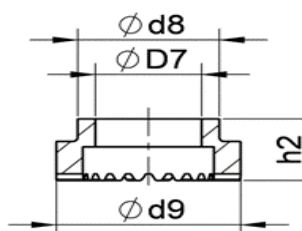
	PF ø12
$D_7$	11,1
$d_8$	16,5
$d_9$	20
$h_2$	~ 9

PF 16 72-00-016



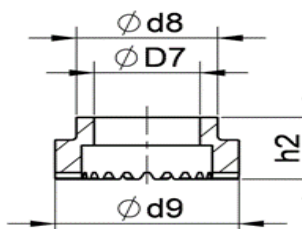
	PF ø16
$D_7$	15
$d_8$	20
$d_9$	26
$h_2$	~11

PF 20 72-00-020



	PF ø20
$D_7$	18,6
$d_8$	30,7
$d_9$	33,8
$h_2$	~10

PF 24 72-00-024



	PF ø24
$D_7$	22,8
$d_8$	30,7
$d_9$	38,5
$h_2$	~18,5

# Svorník se závitem *typ MP ( PD )*

druh materiálu:

- materiál : nerez **A2-50**

$d_1$	$I_2$	$b$	$y$	$d_2$	$d_3$	$h$
M6	15~160	dle poptání	9	5,3	8,5	3,5
M8	15~160	dle poptání	9	7,1	10	3,5
M10	15~160	dle poptání	9,5	8,95	12,5	4
M12	15~160	dle poptání	11,5	10,8	15,5	4,5

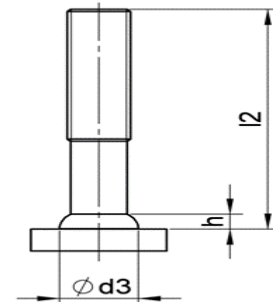
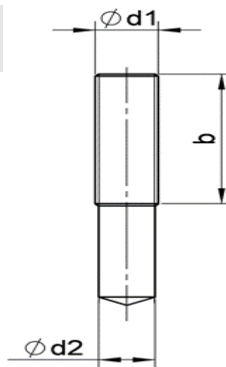
Rozměr \_\_\_\_\_ Objednáací číslo \_\_\_\_\_

M 6 x 15	47-06-015
M 6 x 20	47-06-020
M 6 x 25	47-06-025
M 6 x 30	47-06-030
M 6 x 35	47-06-035
M 6 x 40	47-06-040
M 6 x 45	47-06-045
M 6 x 50	47-06-050
M 6 x 55	47-06-055
M 6 x 60	47-06-060
M 6 x 70	47-06-070
M 6 x 80	47-06-080
M 6 x 100	47-06-100
M 6 x 140	47-06-140
M 6 x 150	47-06-150
M 6 x 160	47-06-160

M 8 x 15	47-08-015
M 8 x 20	47-08-020
M 8 x 25	47-08-025
M 8 x 30	47-08-030
M 8 x 35	47-08-035
M 8 x 40	47-08-040
M 8 x 45	47-08-045
M 8 x 50	47-08-050
M 8 x 55	47-08-055
M 8 x 60	47-08-060
M 8 x 70	47-08-070
M 8 x 80	47-08-080
M 8 x 100	47-08-100
M 8 x 140	47-08-140
M 8 x 150	47-08-150
M 8 x 160	47-08-160

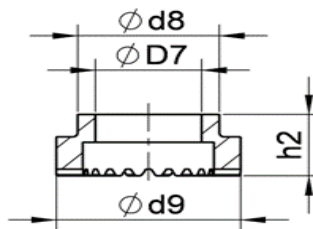
M 10 x 15	47-10-015
M 10 x 20	47-10-020
M 10 x 25	47-10-025
M 10 x 30	47-10-030
M 10 x 35	47-10-035
M 10 x 40	47-10-040
M 10 x 45	47-10-045
M 10 x 50	47-10-050
M 10 x 55	47-10-055
M 10 x 60	47-10-060
M 10 x 70	47-10-070
M 10 x 80	47-10-080
M 10 x 100	47-10-100
M 10 x 140	47-10-140
M 10 x 160	47-10-160

M 12 x 15	47-12-015
M 12 x 20	47-12-020
M 12 x 25	47-12-025
M 12 x 30	47-12-030
M 12 x 35	47-12-035
M 12 x 40	47-12-040
M 12 x 30	47-12-030
M 12 x 35	47-12-035
M 12 x 40	47-12-040



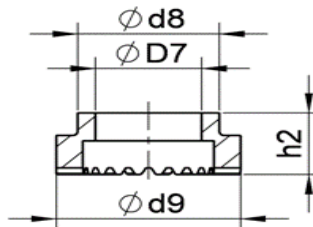
Keramický kroužek \_\_\_\_\_

PF 6 \_\_\_\_\_ 72-00-006



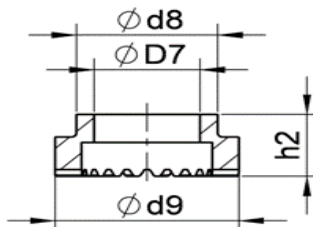
	PF ø 6
$D_7$	5,6
$d_8$	9,5
$d_9$	11,5
$h_2$	~6,5

PF 8 \_\_\_\_\_ 72-00-008



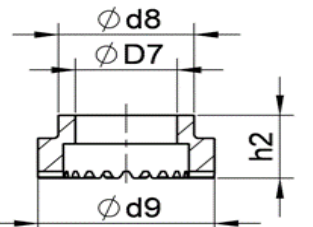
	PF ø 8
$D_7$	7,4
$d_8$	11,5
$d_9$	15
$h_2$	~6,5

PF 10 \_\_\_\_\_ 72-00-010



	PF ø 10
$D_7$	9,2
$d_8$	15
$d_9$	17,8
$h_2$	~6,5

PF 12 \_\_\_\_\_ 71-00-012



	PF ø 12
$D_7$	11,1
$d_8$	16,5
$d_9$	20
$h_2$	~ 9

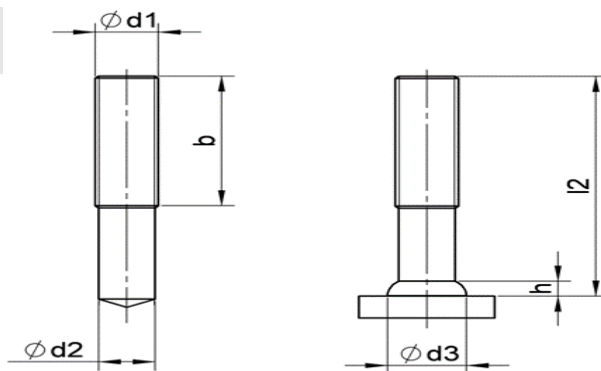


# Svorník se závitem *typ MP (PD)*

druh materiálu:

- materiál : nerez **A2-50**

$d_1$	$I_2$	$b$	$y$	$d_2$	$d_3$	$h$
M12	15~160	dle poptání	11,5	10,8	15,5	4,5
M16	15~160	dle poptání	13,5	14,6	19,5	6
M20	15~160	dle poptání	15,5	18,3	24,5	7
M24	15~160	dle poptání	20	22	30	10



Rozměr \_\_\_\_\_ Objednáací číslo \_\_\_\_\_

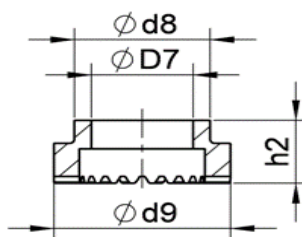
M 12 x 45	47-12-045
M 12 x 50	47-12-050
M 12 x 55	47-12-055
M 12 x 60	47-12-060
M 12 x 65	47-12-065
M 12 x 70	47-12-070
M 12 x 80	47-12-080
M 12 x 100	47-12-100
M 12 x 140	47-12-140
M 12 x 150	47-12-150
M 12 x 160	47-12-160

M 16 x 15	47-16-015
M 16 x 20	47-16-020
M 16 x 25	47-16-025
M 16 x 30	47-16-030
M 16 x 35	47-16-035
M 16 x 40	47-16-040
M 16 x 45	47-16-045
M 16 x 50	47-16-050
M 16 x 55	47-16-055
M 16 x 60	47-16-060
M 16 x 70	47-16-070
M 16 x 80	47-16-080
M 16 x 100	47-16-100
M 16 x 140	47-16-140
M 16 x 150	47-16-150
M 16 x 160	47-16-160

M 20 x 15	47-20-015
M 20 x 20	47-20-020
M 20 x 25	47-20-025
M 20 x 30	47-20-030
M 20 x 35	47-20-035
M 20 x 40	47-20-040
M 20 x 45	47-20-045
M 20 x 50	47-20-050
M 20 x 55	47-20-055
M 20 x 60	47-20-060
M 20 x 70	47-20-070
M 20 x 80	47-20-080
M 20 x 100	47-20-100
M 20 x 140	47-20-140
M 20 x 160	47-20-160

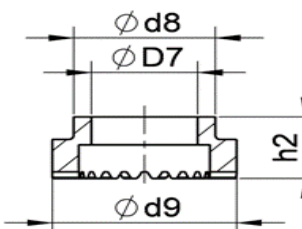
M 24 x 25	47-24-025
M 24 x 30	47-24-030
M 24 x 35	47-24-035
M 24 x 40	47-24-040
M 24 x 45	47-24-045
M 24 x 50	47-24-050
M 24 x 55	47-24-055
M 24 x 60	47-24-060
M 24 x 70	47-24-070
M 24 x 80	47-24-080
M 24 x 100	47-24-100
M 24 x 140	47-24-140
M 24 x 150	47-24-150
M 24 x 160	47-24-160

Keramický kroužek  
PF 12 72-00-012



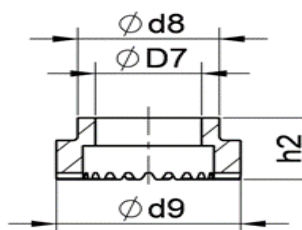
	PF ø12
$D_7$	11,1
$d_8$	16,5
$d_9$	20
$h_2$	~ 9

PF 16 72-00-016



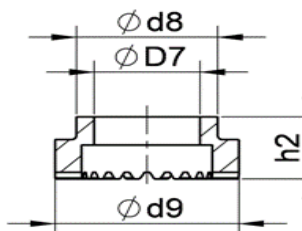
	PF ø16
$D_7$	15
$d_8$	20
$d_9$	26
$h_2$	~11

PF 20 72-00-020



	PF ø20
$D_7$	18,6
$d_8$	30,7
$d_9$	33,8
$h_2$	~10

PF 24 72-00-024



	PF ø24
$D_7$	22,8
$d_8$	30,7
$d_9$	38,5
$h_2$	~18,5

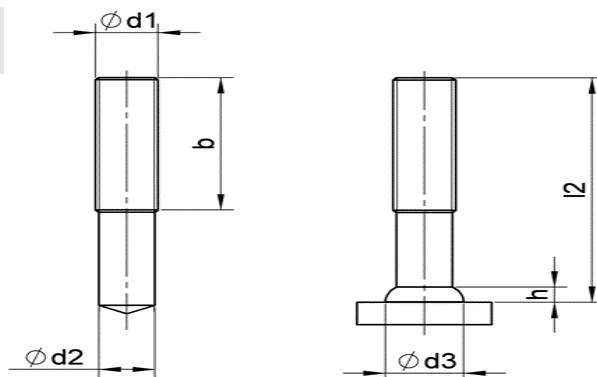


# Svorník se závitem *typ MP (PD)*

druh materiálu:

- materiál : nerez **1.4571**

$d_1$	$I_2$	$b$	$y$	$d_2$	$d_3$	$h$
M6	15~160	dle poptání	9	5,3	8,5	3,5
M8	15~160	dle poptání	9	7,1	10	3,5
M10	15~160	dle poptání	9,5	8,95	12,5	4
M12	15~160	dle poptání	11,5	10,8	15,5	4,5



Rozměr \_\_\_\_\_ Objednáací číslo \_\_\_\_\_

M 6 x 15	48-06-015
M 6 x 20	48-06-020
M 6 x 25	48-06-025
M 6 x 30	48-06-030
M 6 x 35	48-06-035
M 6 x 40	48-06-040
M 6 x 45	48-06-045
M 6 x 50	48-06-050
M 6 x 55	48-06-055
M 6 x 60	48-06-060
M 6 x 70	48-06-070
M 6 x 80	48-06-080
M 6 x 100	48-06-100
M 6 x 140	48-06-140
M 6 x 150	48-06-150
M 6 x 160	48-06-160

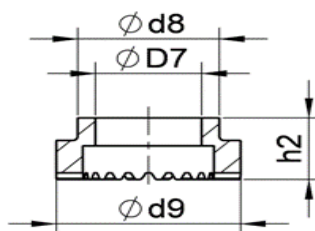
M 8 x 15	48-08-015
M 8 x 20	48-08-020
M 8 x 25	48-08-025
M 8 x 30	48-08-030
M 8 x 35	48-08-035
M 8 x 40	48-08-040
M 8 x 45	48-08-045
M 8 x 50	48-08-050
M 8 x 55	48-08-055
M 8 x 60	48-08-060
M 8 x 70	48-08-070
M 8 x 80	48-08-080
M 8 x 100	48-08-100
M 8 x 140	48-08-140
M 8 x 160	48-08-160

M 10 x 15	48-10-015
M 10 x 20	48-10-020
M 10 x 25	48-10-025
M 10 x 30	48-10-030
M 10 x 35	48-10-035
M 10 x 40	48-10-040
M 10 x 45	48-10-045
M 10 x 50	48-10-050
M 10 x 55	48-10-055
M 10 x 60	48-10-060
M 10 x 70	48-10-070
M 10 x 80	48-10-080
M 10 x 100	48-10-100
M 10 x 140	48-10-140
M 10 x 160	48-10-160

M 12 x 15	48-12-015
M 12 x 20	48-12-020
M 12 x 25	48-12-025
M 12 x 30	48-12-030
M 12 x 35	48-12-035
M 12 x 40	48-12-040
M 12 x 30	48-12-030
M 12 x 35	48-12-035
M 12 x 40	48-12-040

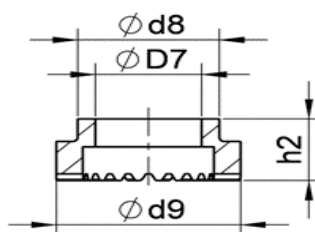
Keramický kroužek \_\_\_\_\_

PF 6 \_\_\_\_\_ 72-00-006



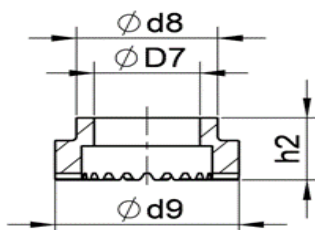
	PF $\phi 6$
$D_7$	5,6
$d_8$	9,5
$d_9$	11,5
$h_2$	~6,5

PF 8 \_\_\_\_\_ 72-00-008



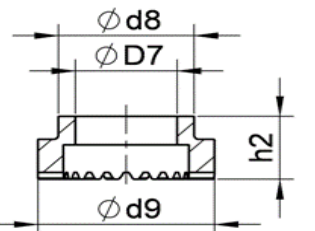
	PF $\phi 8$
$D_7$	7,4
$d_8$	11,5
$d_9$	15
$h_2$	~6,5

PF 10 \_\_\_\_\_ 72-00-010



	PF $\phi 10$
$D_7$	9,2
$d_8$	15
$d_9$	17,8
$h_2$	~6,5

PF 12 \_\_\_\_\_ 71-00-012



	PF $\phi 12$
$D_7$	11,1
$d_8$	16,5
$d_9$	20
$h_2$	~ 9

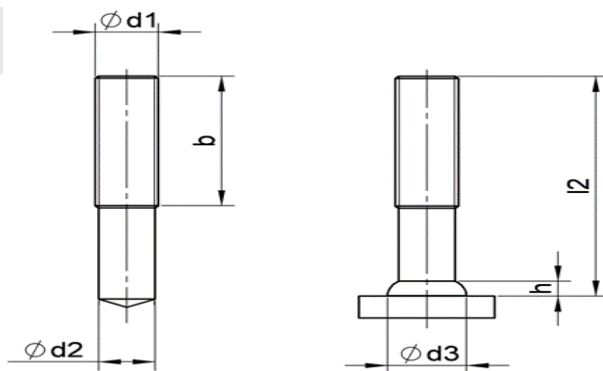


# Svorník se závitem *typ MP ( PD )*

druh materiálu:

- materiál : nerez **1.4571**

$d_1$	$I_2$	$b$	$y$	$d_2$	$d_3$	$h$
M12	15~160	dle poptání	11,5	10,8	15,5	4,5
M16	15~160	dle poptání	13,5	14,6	19,5	6
M20	15~160	dle poptání	15,5	18,3	24,5	7
M24	15~160	dle poptání	20	22	30	10



Rozměr \_\_\_\_\_ Objednáací číslo \_\_\_\_\_

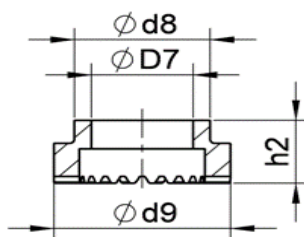
M 12 x 45	48-12-045
M 12 x 50	48-12-050
M 12 x 55	48-12-055
M 12 x 60	48-12-060
M 12 x 65	48-12-065
M 12 x 70	48-12-070
M 12 x 80	48-12-080
M 12 x 100	48-12-100
M 12 x 140	48-12-140
M 12 x 150	48-12-150
M 12 x 160	48-12-160

M 16 x 15	48-16-015
M 16 x 20	48-16-020
M 16 x 25	48-16-025
M 16 x 30	48-16-030
M 16 x 35	48-16-035
M 16 x 40	48-16-040
M 16 x 45	48-16-045
M 16 x 50	48-16-050
M 16 x 55	48-16-055
M 16 x 60	48-16-060
M 16 x 70	48-16-070
M 16 x 80	48-16-080
M 16 x 100	48-16-100
M 16 x 140	48-16-140
M 16 x 150	48-16-150
M 16 x 160	48-16-160

M 20 x 15	48-20-015
M 20 x 20	48-20-020
M 20 x 25	48-20-025
M 20 x 30	48-20-030
M 20 x 35	48-20-035
M 20 x 40	48-20-040
M 20 x 45	48-20-045
M 20 x 50	48-20-050
M 20 x 55	48-20-055
M 20 x 60	48-20-060
M 20 x 70	48-20-070
M 20 x 80	48-20-080
M 20 x 100	48-20-100
M 20 x 140	48-20-140
M 20 x 160	48-20-160

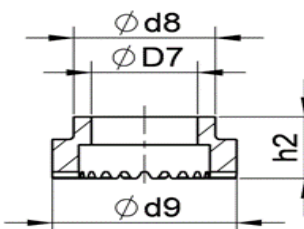
M 24 x 25	48-20-025
M 24 x 30	48-20-030
M 24 x 35	48-20-035
M 24 x 40	48-20-040
M 24 x 45	48-20-045
M 24 x 50	48-20-050
M 24 x 55	48-20-055
M 24 x 60	48-20-060
M 24 x 70	48-20-070
M 24 x 80	48-20-080
M 24 x 100	48-20-100
M 24 x 140	48-20-140
M 24 x 150	48-20-150
M 24 x 160	48-20-160

Keramický kroužek  
PF 12 72-00-012



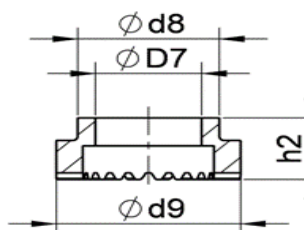
	PF ø12
$D_7$	11,1
$d_8$	16,5
$d_9$	20
$h_2$	~ 9

PF 16 72-00-016



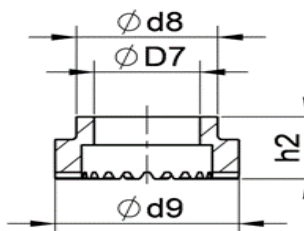
	PF ø16
$D_7$	15
$d_8$	20
$d_9$	26
$h_2$	~11

PF 20 72-00-020



	PF ø20
$D_7$	18,6
$d_8$	30,7
$d_9$	33,8
$h_2$	~10

PF 24 72-00-024



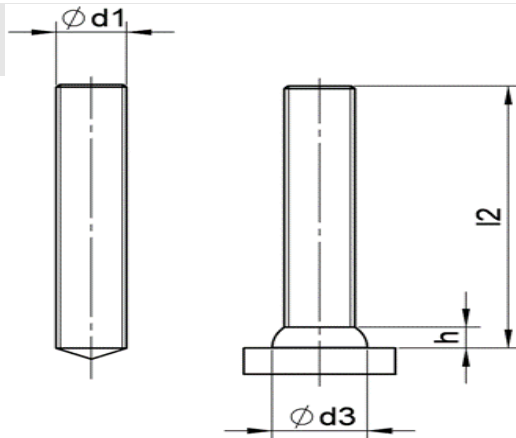
	PF ø24
$D_7$	22,8
$d_8$	30,7
$d_9$	38,5
$h_2$	~18,5

# Svorník se závitem *typ MD*

druh materiálu:

- materiál : ocel 4.8 **St37-3k**

$d_1$	$I_2$	$d_3$	$h$
<b>M8</b>	15~100	10	3
<b>M10</b>	15~100	12,5	3,4
<b>M12</b>	20~100	14,5	4,2
<b>M16</b>	25~100	17,8	5,8
<b>M20</b>	25~100	17,8	5,8

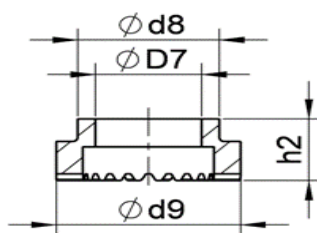


Rozměr \_\_\_\_\_ Objednací číslo \_\_\_\_\_

Keramický kroužek \_\_\_\_\_

<b>M 6 x 20</b>	<b>44-06-020</b>
<b>M 6 x 25</b>	<b>44-06-025</b>
<b>M 6 x 30</b>	<b>44-06-030</b>
<b>M 6 x 35</b>	<b>44-06-035</b>
<b>M 6 x 40</b>	<b>44-06-040</b>
<b>M 6 x 45</b>	<b>44-06-045</b>
<b>M 6 x 50</b>	<b>44-06-050</b>
<b>M 6 x 55</b>	<b>44-06-055</b>
<b>M 6 x 60</b>	<b>44-06-060</b>
<b>M 6 x 70</b>	<b>44-06-070</b>
<b>M 6 x 80</b>	<b>44-06-080</b>
<b>M 6 x 90</b>	<b>44-06-090</b>
<b>M 6 x 100</b>	<b>44-06-100</b>

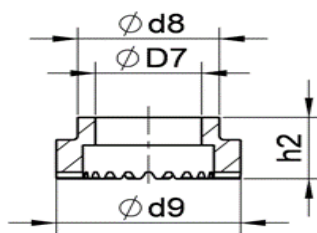
**UF 6** \_\_\_\_\_ **73-00-006**



	<b>UF <math>\phi 6</math></b>
$D_7$	6,2
$d_8$	9,5
$d_9$	11,5
$h_2$	~ 8,7

<b>M 8 x 20</b>	<b>44-08-020</b>
<b>M 8 x 25</b>	<b>44-08-025</b>
<b>M 8 x 30</b>	<b>44-08-030</b>
<b>M 8 x 35</b>	<b>44-08-035</b>
<b>M 8 x 40</b>	<b>44-08-040</b>
<b>M 8 x 45</b>	<b>44-08-045</b>
<b>M 8 x 50</b>	<b>44-08-050</b>
<b>M 8 x 55</b>	<b>44-08-055</b>
<b>M 8 x 60</b>	<b>44-08-060</b>
<b>M 8 x 70</b>	<b>44-08-070</b>
<b>M 8 x 80</b>	<b>44-08-080</b>
<b>M 8 x 90</b>	<b>44-08-090</b>
<b>M 8 x 100</b>	<b>44-08-100</b>

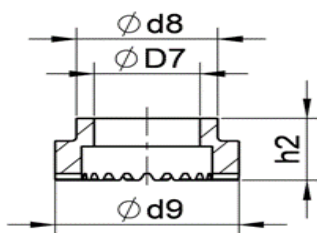
**UF 8** \_\_\_\_\_ **73-00-008**



	<b>UF <math>\phi 8</math></b>
$D_7$	8,2
$d_8$	11
$d_9$	15
$h_2$	~ 8,7

<b>M 10 x 20</b>	<b>44-10-020</b>
<b>M 10 x 25</b>	<b>44-10-025</b>
<b>M 10 x 30</b>	<b>44-10-030</b>
<b>M 10 x 35</b>	<b>44-10-035</b>
<b>M 10 x 40</b>	<b>44-10-040</b>
<b>M 10 x 45</b>	<b>44-10-045</b>
<b>M 10 x 50</b>	<b>44-10-050</b>
<b>M 10 x 55</b>	<b>44-10-055</b>
<b>M 10 x 60</b>	<b>44-10-060</b>
<b>M 10 x 70</b>	<b>44-10-070</b>
<b>M 10 x 80</b>	<b>44-10-080</b>
<b>M 10 x 90</b>	<b>44-10-090</b>
<b>M 10 x 100</b>	<b>44-10-100</b>

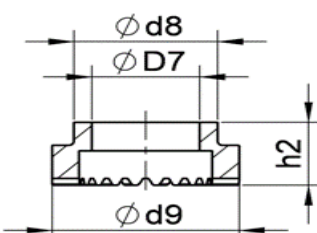
**UF 10** \_\_\_\_\_ **73-00-010**



	<b>UF <math>\phi 10</math></b>
$D_7$	10,2
$d_8$	15
$d_9$	17,8
$h_2$	~ 10

<b>M 12 x 20</b>	<b>44-12-020</b>
<b>M 12 x 25</b>	<b>44-12-025</b>
<b>M 12 x 30</b>	<b>44-12-030</b>
<b>M 12 x 35</b>	<b>44-12-035</b>
<b>M 12 x 40</b>	<b>44-12-040</b>
<b>M 12 x 45</b>	<b>44-12-045</b>
<b>M 12 x 50</b>	<b>44-12-050</b>
<b>M 12 x 55</b>	<b>44-12-055</b>
<b>M 12 x 60</b>	<b>44-12-060</b>
<b>M 12 x 65</b>	<b>44-12-065</b>
<b>M 12 x 70</b>	<b>44-12-070</b>
<b>M 12 x 80</b>	<b>44-12-080</b>
<b>M 12 x 90</b>	<b>44-12-090</b>
<b>M 12 x 100</b>	<b>44-12-100</b>

**UF 12** \_\_\_\_\_ **73-00-012**



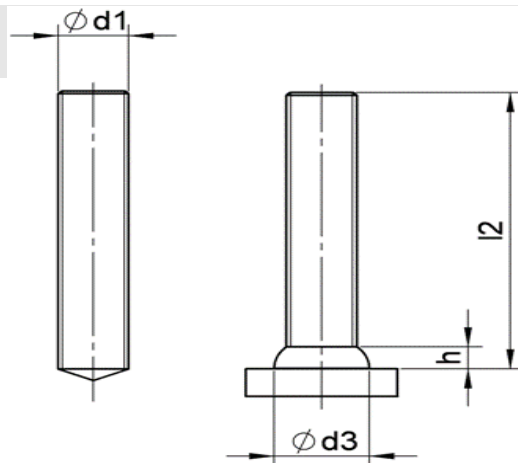
	<b>UF <math>\phi 12</math></b>
$D_7$	12,2
$d_8$	16,5
$d_9$	20
$h_2$	~ 10,7

# Svorník se závitem *typ MD*

druh materiálu:

- materiál : ocel 4.8 **St37-3k**

$d_1$	$I_2$	$d_3$	$h$
<b>M8</b>	15~100	10	3
<b>M10</b>	15~100	12,5	3,4
<b>M12</b>	20~100	14,5	4,2
<b>M16</b>	25~100	17,8	5,8
<b>M20</b>	25~100	17,8	5,8

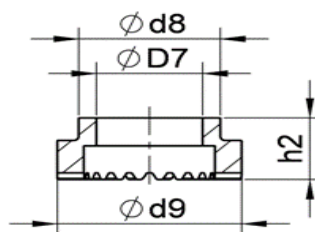


Rozměr \_\_\_\_\_ Objednáací číslo \_\_\_\_\_

Keramický kroužek \_\_\_\_\_

<b>M 16 x 20</b>	<b>44-16-020</b>
<b>M 16 x 25</b>	<b>44-16-025</b>
<b>M 16 x 30</b>	<b>44-16-030</b>
<b>M 16 x 35</b>	<b>44-16-035</b>
<b>M 16 x 40</b>	<b>44-16-040</b>
<b>M 16 x 45</b>	<b>44-16-045</b>
<b>M 16 x 50</b>	<b>44-16-050</b>
<b>M 16 x 55</b>	<b>44-16-055</b>
<b>M 16 x 60</b>	<b>44-16-060</b>
<b>M 16 x 70</b>	<b>44-16-070</b>
<b>M 16 x 80</b>	<b>44-16-080</b>
<b>M 16 x 90</b>	<b>44-16-090</b>
<b>M 16 x 100</b>	<b>44-16-100</b>

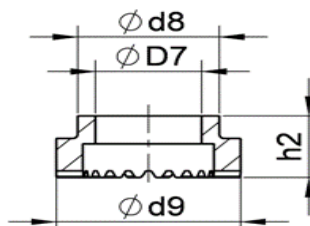
**UF 16** \_\_\_\_\_ **73-00-016**



	<b>UF <math>\phi</math>16</b>
<b><math>D_7</math></b>	16,3
<b><math>d_8</math></b>	26
<b><math>d_9</math></b>	30
<b><math>h_2</math></b>	~ 13

<b>M 20 x 20</b>	<b>44-20-020</b>
<b>M 20 x 25</b>	<b>44-20-025</b>
<b>M 20 x 30</b>	<b>44-20-030</b>
<b>M 20 x 35</b>	<b>44-20-035</b>
<b>M 20 x 40</b>	<b>44-20-040</b>
<b>M 20 x 45</b>	<b>44-20-045</b>
<b>M 20 x 50</b>	<b>44-20-050</b>
<b>M 20 x 55</b>	<b>44-20-055</b>
<b>M 20 x 60</b>	<b>44-20-060</b>
<b>M 20 x 70</b>	<b>44-20-070</b>
<b>M 20 x 80</b>	<b>44-20-080</b>
<b>M 20 x 90</b>	<b>44-20-090</b>
<b>M 20 x 100</b>	<b>44-20-100</b>

**UF 20** \_\_\_\_\_ **73-00-020**



	<b>UF <math>\phi</math>20</b>
<b><math>D_7</math></b>	20,4
<b><math>d_8</math></b>	26,1
<b><math>d_9</math></b>	32,8
<b><math>h_2</math></b>	~ 14,2

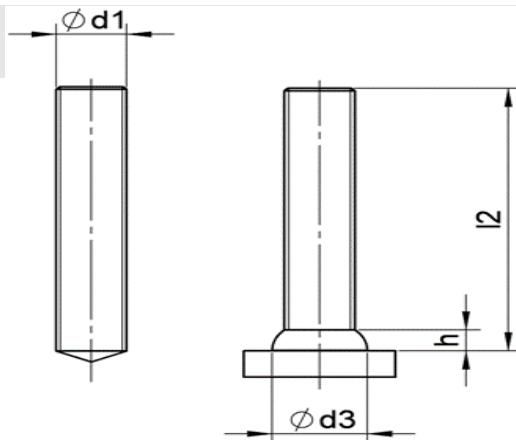


# Svorník se závitem *typ MD*

druh materiálu:

- materiál : nerez **A2-50**

$d_1$	$I_2$	$d_3$	$h$
<b>M8</b>	15~100	10	3
<b>M10</b>	15~100	12,5	3,4
<b>M12</b>	20~100	14,5	4,2
<b>M16</b>	25~100	17,8	5,8
<b>M20</b>	25~100	17,8	5,8

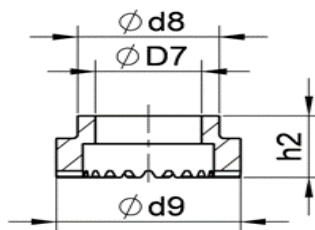


Rozměr \_\_\_\_\_ Objednáací číslo \_\_\_\_\_

Keramický kroužek \_\_\_\_\_

<b>M 6 x 20</b>	<b>54-06-020</b>
<b>M 6 x 25</b>	<b>54-06-025</b>
<b>M 6 x 30</b>	<b>54-06-030</b>
<b>M 6 x 35</b>	<b>54-06-035</b>
<b>M 6 x 40</b>	<b>54-06-040</b>
<b>M 6 x 45</b>	<b>54-06-045</b>
<b>M 6 x 50</b>	<b>54-06-050</b>
<b>M 6 x 55</b>	<b>54-06-055</b>
<b>M 6 x 60</b>	<b>54-06-060</b>
<b>M 6 x 70</b>	<b>54-06-070</b>
<b>M 6 x 80</b>	<b>54-06-080</b>
<b>M 6 x 90</b>	<b>54-06-090</b>
<b>M 6 x 100</b>	<b>54-06-100</b>

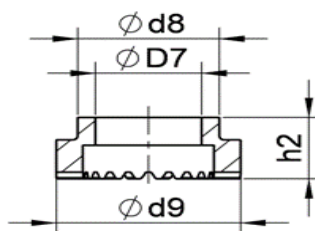
**UF 6** \_\_\_\_\_ **73-00-006**



	<b>UF <math>\phi 6</math></b>
$D_7$	6,2
$d_8$	9,5
$d_9$	11,5
$h_2$	~ 8,7

<b>M 8 x 20</b>	<b>54-08-020</b>
<b>M 8 x 25</b>	<b>54-08-025</b>
<b>M 8 x 30</b>	<b>54-08-030</b>
<b>M 8 x 35</b>	<b>54-08-035</b>
<b>M 8 x 40</b>	<b>54-08-040</b>
<b>M 8 x 45</b>	<b>54-08-045</b>
<b>M 8 x 50</b>	<b>54-08-050</b>
<b>M 8 x 55</b>	<b>54-08-055</b>
<b>M 8 x 60</b>	<b>54-08-060</b>
<b>M 8 x 70</b>	<b>54-08-070</b>
<b>M 8 x 80</b>	<b>54-08-080</b>
<b>M 8 x 90</b>	<b>54-08-090</b>
<b>M 8 x 100</b>	<b>54-08-100</b>

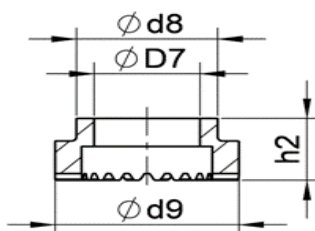
**UF 8** \_\_\_\_\_ **73-00-008**



	<b>UF <math>\phi 8</math></b>
$D_7$	8,2
$d_8$	11
$d_9$	15
$h_2$	~ 8,7

<b>M 10 x 20</b>	<b>54-10-020</b>
<b>M 10 x 25</b>	<b>54-10-025</b>
<b>M 10 x 30</b>	<b>54-10-030</b>
<b>M 10 x 35</b>	<b>54-10-035</b>
<b>M 10 x 40</b>	<b>54-10-040</b>
<b>M 10 x 45</b>	<b>54-10-045</b>
<b>M 10 x 50</b>	<b>54-10-050</b>
<b>M 10 x 55</b>	<b>54-10-055</b>
<b>M 10 x 60</b>	<b>54-10-060</b>
<b>M 10 x 70</b>	<b>54-10-070</b>
<b>M 10 x 80</b>	<b>54-10-080</b>
<b>M 10 x 90</b>	<b>54-10-090</b>
<b>M 10 x 100</b>	<b>54-10-100</b>

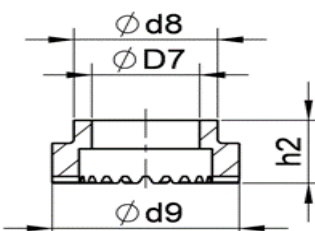
**UF 10** \_\_\_\_\_ **73-00-010**



	<b>UF <math>\phi 10</math></b>
$D_7$	10,2
$d_8$	15
$d_9$	17,8
$h_2$	~ 10

<b>M 12 x 20</b>	<b>54-12-020</b>
<b>M 12 x 25</b>	<b>54-12-025</b>
<b>M 12 x 30</b>	<b>54-12-030</b>
<b>M 12 x 35</b>	<b>54-12-035</b>
<b>M 12 x 40</b>	<b>54-12-040</b>
<b>M 12 x 45</b>	<b>54-12-045</b>
<b>M 12 x 50</b>	<b>54-12-050</b>
<b>M 12 x 55</b>	<b>54-12-055</b>
<b>M 12 x 60</b>	<b>54-12-060</b>
<b>M 12 x 65</b>	<b>54-12-065</b>
<b>M 12 x 70</b>	<b>54-12-070</b>
<b>M 12 x 80</b>	<b>54-12-080</b>
<b>M 12 x 90</b>	<b>54-12-090</b>
<b>M 12 x 100</b>	<b>54-12-100</b>

**UF 12** \_\_\_\_\_ **73-00-012**



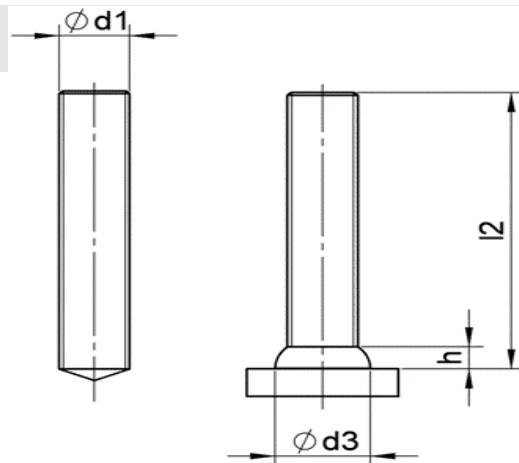
	<b>UF <math>\phi 12</math></b>
$D_7$	12,2
$d_8$	16,5
$d_9$	20
$h_2$	~ 10,7

# Svorník se závitem *typ MD*

druh materiálu:

- materiál : nerez **A2-50**

$d_1$	$I_2$	$d_3$	$h$
<b>M8</b>	15~100	10	3
<b>M10</b>	15~100	12,5	3,4
<b>M12</b>	20~100	14,5	4,2
<b>M16</b>	25~100	17,8	5,8
<b>M20</b>	25~100	17,8	5,8



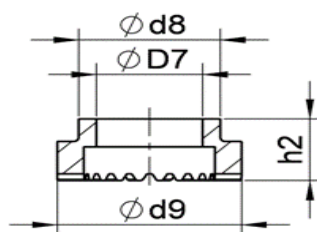
Rozměr \_\_\_\_\_ Objednací číslo \_\_\_\_\_

<b>M 16 x 15</b>	<b>54-16-015</b>
<b>M 16 x 20</b>	<b>54-16-020</b>
<b>M 16 x 25</b>	<b>54-16-025</b>
<b>M 16 x 30</b>	<b>54-16-030</b>
<b>M 16 x 35</b>	<b>54-16-035</b>
<b>M 16 x 40</b>	<b>54-16-040</b>
<b>M 16 x 45</b>	<b>54-16-045</b>
<b>M 16 x 50</b>	<b>54-16-050</b>
<b>M 16 x 55</b>	<b>54-16-055</b>
<b>M 16 x 60</b>	<b>54-16-060</b>
<b>M 16 x 70</b>	<b>54-16-070</b>
<b>M 16 x 80</b>	<b>54-16-080</b>
<b>M 16 x 100</b>	<b>54-16-100</b>
<b>M 16 x 140</b>	<b>54-16-140</b>
<b>M 16 x 150</b>	<b>54-16-150</b>
<b>M 16 x 160</b>	<b>54-16-160</b>

<b>M 20 x 15</b>	<b>54-20-015</b>
<b>M 20 x 20</b>	<b>54-20-020</b>
<b>M 20 x 25</b>	<b>54-20-025</b>
<b>M 20 x 30</b>	<b>54-20-030</b>
<b>M 20 x 35</b>	<b>54-20-035</b>
<b>M 20 x 40</b>	<b>54-20-040</b>
<b>M 20 x 45</b>	<b>54-20-045</b>
<b>M 20 x 50</b>	<b>54-20-050</b>
<b>M 20 x 55</b>	<b>54-20-055</b>
<b>M 20 x 60</b>	<b>54-20-060</b>
<b>M 20 x 70</b>	<b>54-20-070</b>
<b>M 20 x 80</b>	<b>54-20-080</b>
<b>M 20 x 100</b>	<b>54-20-100</b>
<b>M 20 x 140</b>	<b>54-20-140</b>
<b>M 20 x 150</b>	<b>54-20-150</b>
<b>M 20 x 160</b>	<b>54-20-160</b>

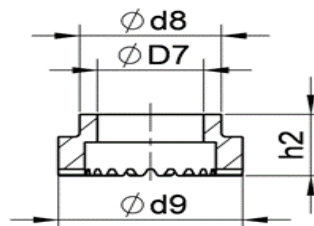
Keramický kroužek \_\_\_\_\_

**UF 16** \_\_\_\_\_ **73-00-016**



	<b>UF <math>\phi 16</math></b>
$D_7$	16,3
$d_8$	26
$d_9$	30
$h_2$	~ 13

**UF 20** \_\_\_\_\_ **73-00-020**



	<b>UF <math>\phi 20</math></b>
$D_7$	20,4
$d_8$	26,1
$d_9$	32,8
$h_2$	~ 14,2

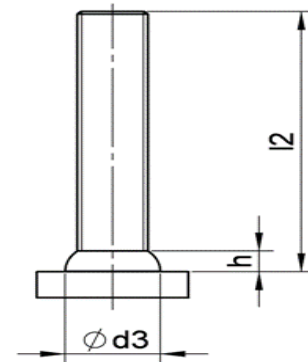
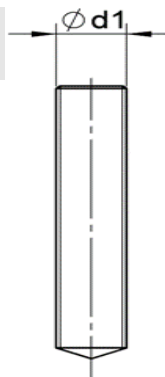


# Svorník se závitem *typ MD*

druh materiálu:

- materiál : nerez **1.4571**

$d_1$	$I_2$	$d_3$	$h$
<b>M8</b>	15~100	10	3
<b>M10</b>	15~100	12,5	3,4
<b>M12</b>	20~100	14,5	4,2
<b>M16</b>	25~100	17,8	5,8
<b>M20</b>	25~100	17,8	5,8

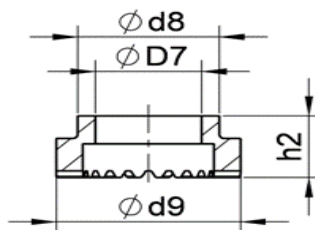


Rozměr \_\_\_\_\_ Objednáací číslo \_\_\_\_\_

Keramický kroužek \_\_\_\_\_

<b>M 6 x 20</b>	<b>54-1-06-020</b>
<b>M 6 x 25</b>	<b>54-1-06-025</b>
<b>M 6 x 30</b>	<b>54-1-06-030</b>
<b>M 6 x 35</b>	<b>54-1-06-035</b>
<b>M 6 x 40</b>	<b>54-1-06-040</b>
<b>M 6 x 45</b>	<b>54-1-06-045</b>
<b>M 6 x 50</b>	<b>54-1-06-050</b>
<b>M 6 x 55</b>	<b>54-1-06-055</b>
<b>M 6 x 60</b>	<b>54-1-06-060</b>
<b>M 6 x 70</b>	<b>54-1-06-070</b>
<b>M 6 x 80</b>	<b>54-1-06-080</b>
<b>M 6 x 90</b>	<b>54-1-06-090</b>
<b>M 6 x 100</b>	<b>54-1-06-100</b>

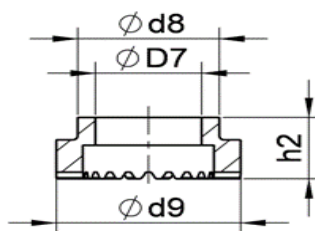
**UF 6** \_\_\_\_\_ **73-00-006**



	<b>UF ø 6</b>
$D_7$	6,2
$d_8$	9,5
$d_9$	11,5
$h_2$	~ 8,7

<b>M 8 x 20</b>	<b>54-1-08-020</b>
<b>M 8 x 25</b>	<b>54-1-08-025</b>
<b>M 8 x 30</b>	<b>54-1-08-030</b>
<b>M 8 x 35</b>	<b>54-1-08-035</b>
<b>M 8 x 40</b>	<b>54-1-08-040</b>
<b>M 8 x 45</b>	<b>54-1-08-045</b>
<b>M 8 x 50</b>	<b>54-1-08-050</b>
<b>M 8 x 55</b>	<b>54-1-08-055</b>
<b>M 8 x 60</b>	<b>54-1-08-060</b>
<b>M 8 x 70</b>	<b>54-1-08-070</b>
<b>M 8 x 80</b>	<b>54-1-08-080</b>
<b>M 8 x 90</b>	<b>54-1-08-090</b>
<b>M 8 x 100</b>	<b>54-1-08-100</b>

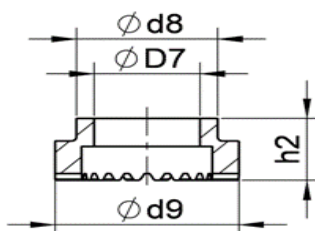
**UF 8** \_\_\_\_\_ **73-00-008**



	<b>UF ø 8</b>
$D_7$	8,2
$d_8$	11
$d_9$	15
$h_2$	~ 8,7

<b>M 10 x 20</b>	<b>54-1-10-020</b>
<b>M 10 x 25</b>	<b>54-1-10-025</b>
<b>M 10 x 30</b>	<b>54-1-10-030</b>
<b>M 10 x 35</b>	<b>54-1-10-035</b>
<b>M 10 x 40</b>	<b>54-1-10-040</b>
<b>M 10 x 45</b>	<b>54-1-10-045</b>
<b>M 10 x 50</b>	<b>54-1-10-050</b>
<b>M 10 x 55</b>	<b>54-1-10-055</b>
<b>M 10 x 60</b>	<b>54-1-10-060</b>
<b>M 10 x 70</b>	<b>54-1-10-070</b>
<b>M 10 x 80</b>	<b>54-1-10-080</b>
<b>M 10 x 90</b>	<b>54-1-10-090</b>
<b>M 10 x 100</b>	<b>54-1-10-100</b>

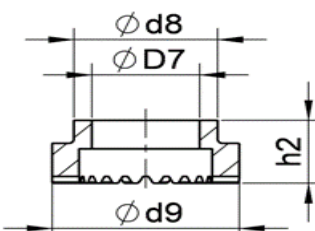
**UF 10** \_\_\_\_\_ **73-00-010**



	<b>UF ø 10</b>
$D_7$	10,2
$d_8$	15
$d_9$	17,8
$h_2$	~ 10

<b>M 12 x 20</b>	<b>54-1-12-020</b>
<b>M 12 x 25</b>	<b>54-1-12-025</b>
<b>M 12 x 30</b>	<b>54-1-12-030</b>
<b>M 12 x 35</b>	<b>54-1-12-035</b>
<b>M 12 x 40</b>	<b>54-1-12-040</b>
<b>M 12 x 45</b>	<b>54-1-12-045</b>
<b>M 12 x 50</b>	<b>54-1-12-050</b>
<b>M 12 x 55</b>	<b>54-1-12-055</b>
<b>M 12 x 60</b>	<b>54-1-12-060</b>
<b>M 12 x 65</b>	<b>54-1-12-065</b>
<b>M 12 x 70</b>	<b>54-1-12-070</b>
<b>M 12 x 80</b>	<b>54-1-12-080</b>
<b>M 12 x 90</b>	<b>54-1-12-090</b>
<b>M 12 x 100</b>	<b>54-1-12-100</b>

**UF 12** \_\_\_\_\_ **73-00-012**



	<b>UF ø 12</b>
$D_7$	12,2
$d_8$	16,5
$d_9$	20
$h_2$	~ 10,7

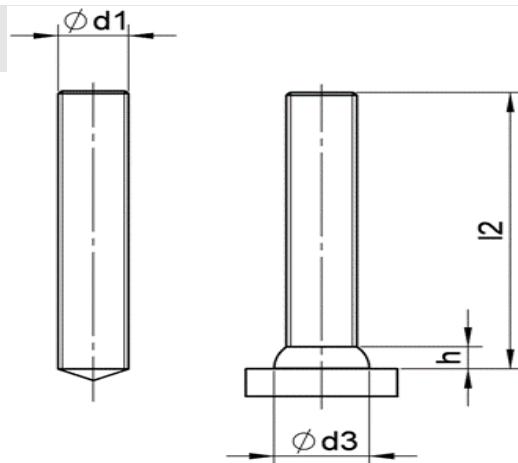


# Svorník se závitem *typ MD*

druh materiálu:

- materiál : nerez **1.4571**

$d_1$	$I_2$	$d_3$	$h$
<b>M8</b>	15~100	10	3
<b>M10</b>	15~100	12,5	3,4
<b>M12</b>	20~100	14,5	4,2
<b>M16</b>	25~100	17,8	5,8
<b>M20</b>	25~100	17,8	5,8



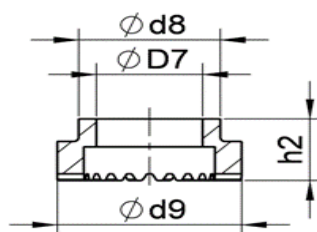
Rozměr \_\_\_\_\_ Objednací číslo \_\_\_\_\_

<b>M 16 x 15</b>	<b>54-1-16-015</b>
<b>M 16 x 20</b>	<b>54-1-16-020</b>
<b>M 16 x 25</b>	<b>54-1-16-025</b>
<b>M 16 x 30</b>	<b>54-1-16-030</b>
<b>M 16 x 35</b>	<b>54-1-16-035</b>
<b>M 16 x 40</b>	<b>54-1-16-040</b>
<b>M 16 x 45</b>	<b>54-1-16-045</b>
<b>M 16 x 50</b>	<b>54-1-16-050</b>
<b>M 16 x 55</b>	<b>54-1-16-055</b>
<b>M 16 x 60</b>	<b>54-1-16-060</b>
<b>M 16 x 70</b>	<b>54-1-16-070</b>
<b>M 16 x 80</b>	<b>54-1-16-080</b>
<b>M 16 x 100</b>	<b>54-1-16-100</b>
<b>M 16 x 140</b>	<b>54-1-16-140</b>
<b>M 16 x 150</b>	<b>54-1-16-150</b>
<b>M 16 x 160</b>	<b>54-1-16-160</b>

<b>M 20 x 15</b>	<b>54-1-20-015</b>
<b>M 20 x 20</b>	<b>54-1-20-020</b>
<b>M 20 x 25</b>	<b>54-1-20-025</b>
<b>M 20 x 30</b>	<b>54-1-20-030</b>
<b>M 20 x 35</b>	<b>54-1-20-035</b>
<b>M 20 x 40</b>	<b>54-1-20-040</b>
<b>M 20 x 45</b>	<b>54-1-20-045</b>
<b>M 20 x 50</b>	<b>54-1-20-050</b>
<b>M 20 x 55</b>	<b>54-1-20-055</b>
<b>M 20 x 60</b>	<b>54-1-20-060</b>
<b>M 20 x 70</b>	<b>54-1-20-070</b>
<b>M 20 x 80</b>	<b>54-1-20-080</b>
<b>M 20 x 100</b>	<b>54-1-20-100</b>
<b>M 20 x 140</b>	<b>54-1-20-140</b>
<b>M 20 x 150</b>	<b>54-1-20-150</b>
<b>M 20 x 160</b>	<b>54-1-20-160</b>

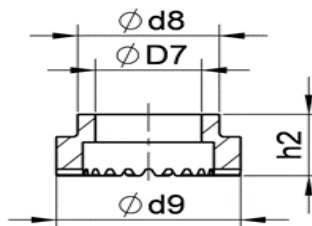
Keramický kroužek \_\_\_\_\_

**UF 16** \_\_\_\_\_ **73-00-016**



	<b>UF <math>\phi 16</math></b>
$D_7$	16,3
$d_8$	26
$d_9$	30
$h_2$	~ 13

**UF 20** \_\_\_\_\_ **73-00-020**



	<b>UF <math>\phi 20</math></b>
$D_7$	20,4
$d_8$	26,1
$d_9$	32,8
$h_2$	~ 14,2



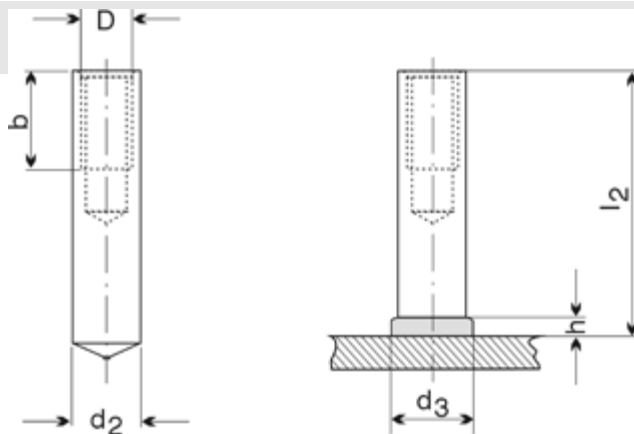


# Svorník s vnitřním závitem typ ID

druh materiálu:

- materiál : ocel 4.8 **St37-3k**

D	I <sub>2</sub>	d <sub>2</sub>	d <sub>3</sub>	b	h
M5	15~100	10	13	7	4
M6	15~100	10	13	9	4
M8	15~100	12	16	12	5
M10	20~100	14,6	18,5	15	5,8
M12	25~100	18,3	23,2	15	7
M16	40~100	22	28	24	10



Rozměr

Objednáací číslo

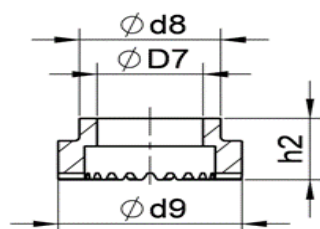
ø 10 x 15 - M 5	61-50-015
ø 10 x 20 - M 5	61-50-020
ø 10 x 25 - M 5	61-50-025
ø 10 x 30 - M 5	61-50-030
ø 10 x 35 - M 5	61-50-035
ø 10 x 40 - M 5	61-50-040
ø 10 x 45 - M 5	61-50-045
ø 10 x 50 - M 5	61-50-050
ø 10 x 60 - M 5	61-50-060
ø 10 x 70 - M 5	61-50-070
ø 10 x 80 - M 5	61-50-080
ø 10 x 90 - M 5	61-50-090
ø 10 x 100 - M 5	61-50-100

ø 10 x 15 - M 6	61-60-015
ø 10 x 20 - M 6	61-60-020
ø 10 x 25 - M 6	61-60-025
ø 10 x 30 - M 6	61-60-030
ø 10 x 35 - M 6	61-60-035
ø 10 x 40 - M 6	61-60-040
ø 10 x 45 - M 6	61-60-045
ø 10 x 50 - M 6	61-60-050
ø 10 x 60 - M 6	61-60-060
ø 10 x 70 - M 6	61-60-070
ø 10 x 80 - M 6	61-60-080
ø 10 x 90 - M 6	61-60-090
ø 10 x 100 - M 6	61-60-100

ø 12 x 15 - M 8	61-82-015
ø 12 x 20 - M 8	61-82-020
ø 12 x 25 - M 8	61-82-025
ø 12 - 30 - M 8	61-82-030
ø 12 x 35 - M 8	61-82-035
ø 12 x 40 - M 8	61-82-040
ø 12 x 45 - M 8	61-82-045
ø 12 x 50 - M 8	61-82-050
ø 12 x 60 - M 8	61-82-060
ø 12 x 70 - M 8	61-82-070
ø 12 x 80 - M 8	61-82-080
ø 12 x 90 - M 8	61-82-090
ø 12 x 100 - M 8	61-82-100

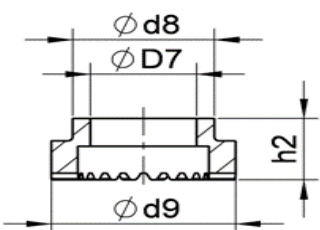
Keramický kroužek

UF 10 73-00-010



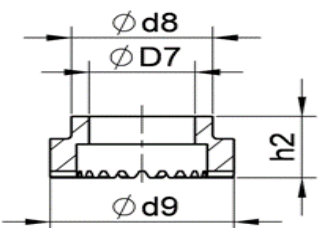
	UF ø10
D <sub>7</sub>	10,2
d <sub>8</sub>	15
d <sub>9</sub>	17,8
h <sub>2</sub>	~ 10

UF 10 73-00-010



	UF ø10
D <sub>7</sub>	10,2
d <sub>8</sub>	15
d <sub>9</sub>	17,8
h <sub>2</sub>	~ 10

UF 12 73-00-010



	UF ø12
D <sub>7</sub>	12,2
d <sub>8</sub>	16,5
d <sub>9</sub>	20
h <sub>2</sub>	~ 10,7

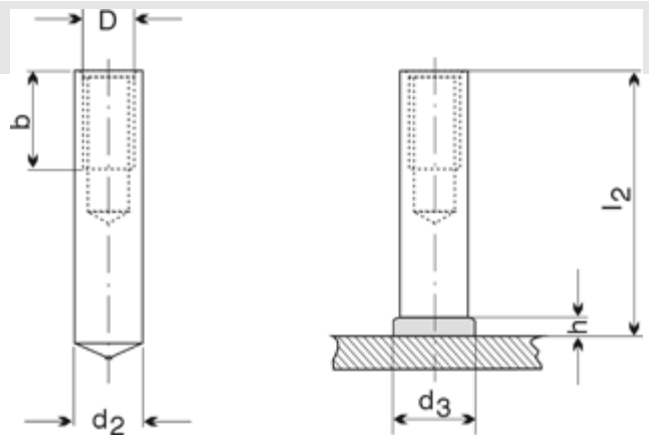


# Svorník s vnitřním závitem typ ID

druh materiálu:

- materiál : ocel 4.8 **St37-3k**

D	I <sub>2</sub>	d <sub>2</sub>	d <sub>3</sub>	b	h
M5	15~100	10	13	7	4
M6	15~100	10	13	9	4
M8	15~100	12	16	12	5
M10	20~100	14,6	18,5	15	5,8
M12	25~100	18,3	23,2	15	7
M16	40~100	22	28	24	10



Rozměr

Objednáací číslo

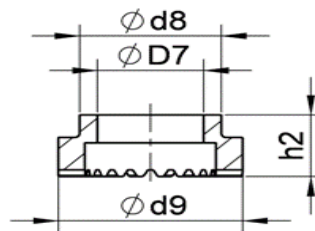
ø 14,6 x 20 - M 10	61-04,6-020
ø 14,6 x 25 - M 10	61-04,6-025
ø 14,6 x 30 - M 10	61-04,6-030
ø 14,6 x 35 - M 10	61-04,6-035
ø 14,6 x 40 - M 10	61-04,6-040
ø 14,6 x 45 - M 10	61-04,6-045
ø 14,6 x 50 - M 10	61-04,6-050
ø 14,6 x 60 - M 10	61-04,6-060
ø 14,6 x 70 - M 10	61-04,6-070
ø 14,6 x 80 - M 10	61-04,6-080
ø 14,6 x 90 - M 10	61-04,6-090
ø 14,6 x 100 - M 10	61-04,6-100

ø 18,3 x 25 - M 12	61-12-025
ø 18,3 x 30 - M 12	61-12-030
ø 18,3 x 35 - M 12	61-12-035
ø 18,3 x 40 - M 12	61-12-040
ø 18,3 x 45 - M 12	61-12-045
ø 18,3 x 50 - M 12	61-12-050
ø 18,3 x 60 - M 12	61-12-060
ø 18,3 x 70 - M 12	61-12-070
ø 18,3 x 80 - M 12	61-12-080
ø 18,3 x 90 - M 12	61-12-090
ø 18,3 x 100 - M 12	61-12-100

ø 22 x 40 - M 16	61-16-040
ø 22 x 45 - M 16	61-16-045
ø 22 x 50 - M 16	61-16-050
ø 22 x 60 - M 16	61-16-060
ø 22 x 70 - M 16	61-16-070
ø 22 x 80 - M 16	61-16-080
ø 22 x 90 - M 16	61-16-090
ø 22 x 100 - M 16	61-16-100

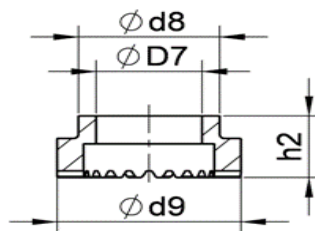
Keramický kroužek

PF 16 72-00-016



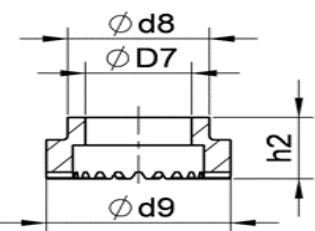
	PF ø16
D <sub>7</sub>	15
d <sub>8</sub>	20
d <sub>9</sub>	26
h <sub>2</sub>	~ 11

UF 19 73-00-019



	UF ø19
D <sub>7</sub>	20,4
d <sub>8</sub>	26,1
d <sub>9</sub>	32,8
h <sub>2</sub>	~ 14,2

UF 22 73-00-022



	UF ø22
D <sub>7</sub>	22,8
d <sub>8</sub>	30,7
d <sub>9</sub>	38,5
h <sub>2</sub>	~ 18,5

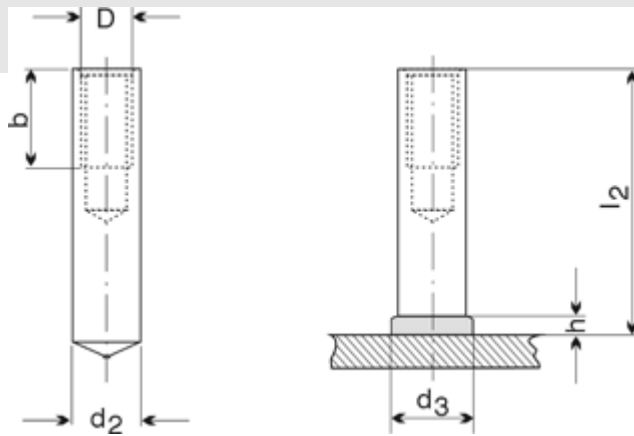


# Svorník s vnitřním závitem typ ID

druh materiálu:

- materiál : nerez **A2-50**

D	I <sub>2</sub>	d <sub>2</sub>	d <sub>3</sub>	b	h
M5	15~100	10	13	7	4
M6	15~100	10	13	9	4
M8	15~100	12	16	12	5
M10	20~100	14,6	18,5	15	5,8
M12	25~100	18,3	23,2	15	7
M16	40~100	22	28	24	10



Rozměr \_\_\_\_\_ Objednáací číslo \_\_\_\_\_

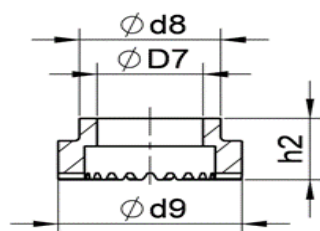
<b>ø 10 x 15 - M 5</b>	62-50-015
<b>ø 10 x 20 - M 5</b>	62-50-020
<b>ø 10 x 25 - M 5</b>	62-50-025
<b>ø 10 x 30 - M 5</b>	62-50-030
<b>ø 10 x 35 - M 5</b>	62-50-035
<b>ø 10 x 40 - M 5</b>	62-50-040
<b>ø 10 x 45 - M 5</b>	62-50-045
<b>ø 10 x 50 - M 5</b>	62-50-050
<b>ø 10 x 60 - M 5</b>	62-50-060
<b>ø 10 x 70 - M 5</b>	62-50-070
<b>ø 10 x 80 - M 5</b>	62-50-080
<b>ø 10 x 90 - M 5</b>	62-50-090
<b>ø 10 x 100 - M 5</b>	62-50-100

<b>ø 10 x 15 - M 6</b>	62-60-015
<b>ø 10 x 20 - M 6</b>	62-60-020
<b>ø 10 x 25 - M 6</b>	62-60-025
<b>ø 10 x 30 - M 6</b>	62-60-030
<b>ø 10 x 35 - M 6</b>	62-60-035
<b>ø 10 x 40 - M 6</b>	62-60-040
<b>ø 10 x 45 - M 6</b>	62-60-045
<b>ø 10 x 50 - M 6</b>	62-60-050
<b>ø 10 x 60 - M 6</b>	62-60-060
<b>ø 10 x 70 - M 6</b>	62-60-070
<b>ø 10 x 80 - M 6</b>	62-60-080
<b>ø 10 x 90 - M 6</b>	62-60-090
<b>ø 10 x 100 - M 6</b>	62-60-100

<b>ø 12 x 15 - M 8</b>	62-82-015
<b>ø 12 x 20 - M 8</b>	62-82-020
<b>ø 12 x 25 - M 8</b>	62-82-025
<b>ø 12 - 30 - M 8</b>	62-82-030
<b>ø 12 x 35 - M 8</b>	62-82-035
<b>ø 12 x 40 - M 8</b>	62-82-040
<b>ø 12 x 45 - M 8</b>	62-82-045
<b>ø 12 x 50 - M 8</b>	62-82-050
<b>ø 12 x 60 - M 8</b>	62-82-060
<b>ø 12 x 70 - M 8</b>	62-82-070
<b>ø 12 x 80 - M 8</b>	62-82-080
<b>ø 12 x 90 - M 8</b>	62-82-090
<b>ø 12 x 100 - M 8</b>	62-82-100

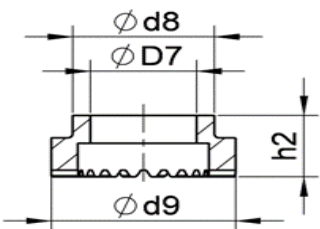
Keramický kroužek \_\_\_\_\_

**UF 10** \_\_\_\_\_ **73-00-010**



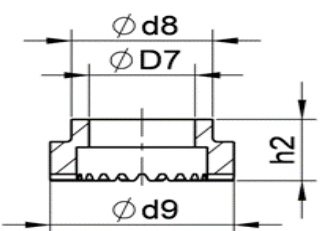
	UF ø10
D <sub>7</sub>	10,2
d <sub>8</sub>	15
d <sub>9</sub>	17,8
h <sub>2</sub>	~ 10

**UF 10** \_\_\_\_\_ **73-00-010**



	UF ø10
D <sub>7</sub>	10,2
d <sub>8</sub>	15
d <sub>9</sub>	17,8
h <sub>2</sub>	~ 10

**UF 12** \_\_\_\_\_ **73-00-010**



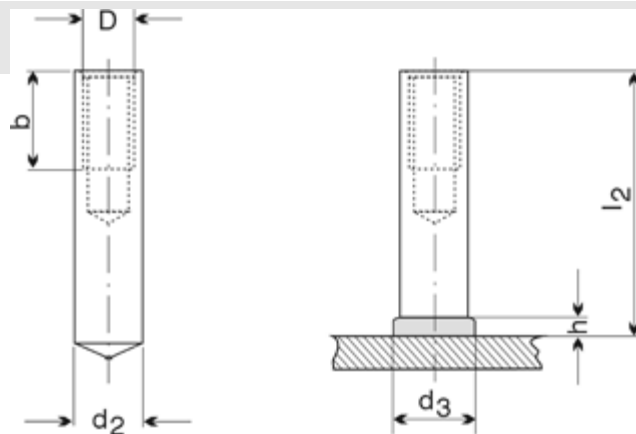
	UF ø12
D <sub>7</sub>	12,2
d <sub>8</sub>	16,5
d <sub>9</sub>	20
h <sub>2</sub>	~ 10,7

# Svorník s vnitřním závitem typ ID

druh materiálu:

- materiál : nerez **A2-50**

D	I <sub>2</sub>	d <sub>2</sub>	d <sub>3</sub>	b	h
M5	15~100	10	13	7	4
M6	15~100	10	13	9	4
M8	15~100	12	16	12	5
M10	20~100	14,6	18,5	15	5,8
M12	25~100	18,3	23,2	15	7
M16	40~100	22	28	24	10



Rozměr

Objednáací číslo

ø 14,6 x 20 - M 10	62-04,6-020
ø 14,6 x 25 - M 10	62-04,6-025
ø 14,6 x 30 - M 10	62-04,6-030
ø 14,6 x 35 - M 10	62-04,6-035
ø 14,6 x 40 - M 10	62-04,6-040
ø 14,6 x 45 - M 10	62-04,6-045
ø 14,6 x 50 - M 10	62-04,6-050
ø 14,6 x 60 - M 10	62-04,6-060
ø 14,6 x 70 - M 10	62-04,6-070
ø 14,6 x 80 - M 10	62-04,6-080
ø 14,6 x 90 - M 10	62-04,6-090
ø 14,6 x 100 - M 10	62-04,6-100

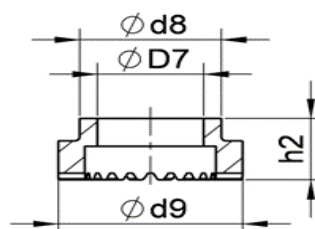
ø 18,3 x 25 - M 12	62-12-025
ø 18,3 x 30 - M 12	62-12-030
ø 18,3 x 35 - M 12	62-12-035
ø 18,3 x 40 - M 12	62-12-040
ø 18,3 x 45 - M 12	62-12-045
ø 18,3 x 50 - M 12	62-12-050
ø 18,3 x 60 - M 12	62-12-060
ø 18,3 x 70 - M 12	62-12-070
ø 18,3 x 80 - M 12	62-12-080
ø 18,3 x 90 - M 12	62-12-090
ø 18,3 x 100 - M 12	62-12-100

ø 22 x 40 - M 16	62-16-040
ø 22 x 45 - M 16	62-16-045
ø 22 x 50 - M 16	62-16-050
ø 22 x 60 - M 16	62-16-060
ø 22 x 70 - M 16	62-16-070
ø 22 x 80 - M 16	62-16-080
ø 22 x 90 - M 16	62-16-090
ø 22 x 100 - M 16	62-16-100

Keramický kroužek

PF 16

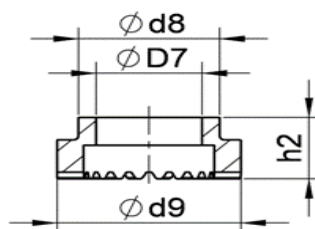
72-00-016



	PF ø16
D <sub>7</sub>	15
d <sub>8</sub>	20
d <sub>9</sub>	26
h <sub>2</sub>	~ 11

UF 19

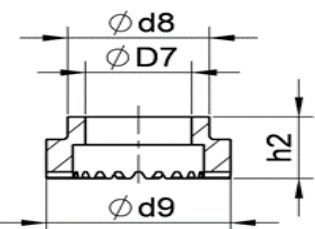
73-00-019



	UF ø19
D <sub>7</sub>	20,4
d <sub>8</sub>	26,1
d <sub>9</sub>	32,8
h <sub>2</sub>	~ 14,2

UF 22

73-00-022



	UF ø22
D <sub>7</sub>	22,8
d <sub>8</sub>	30,7
d <sub>9</sub>	38,5
h <sub>2</sub>	~ 18,5

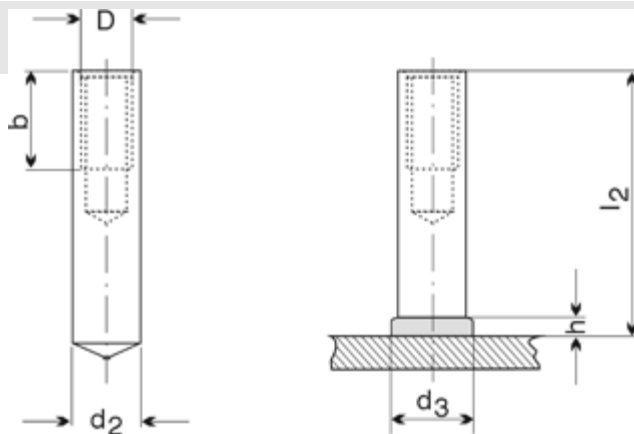


# Svorník s vnitřním závitem typ ID

druh materiálu:

- materiál : nerez **1.4571**

D	I <sub>2</sub>	d <sub>2</sub>	d <sub>3</sub>	b	h
M5	15~100	10	13	7	4
M6	15~100	10	13	9	4
M8	15~100	12	16	12	5
M10	20~100	14,6	18,5	15	5,8
M12	25~100	18,3	23,2	15	7
M16	40~100	22	28	24	10



Rozměr

Objednáací číslo

ø 10 x 15 - M 5	62-3-50-015
ø 10 x 20 - M 5	62-3-50-020
ø 10 x 25 - M 5	62-3-50-025
ø 10 x 30 - M 5	62-3-50-030
ø 10 x 35 - M 5	62-3-50-035
ø 10 x 40 - M 5	62-3-50-040
ø 10 x 45 - M 5	62-3-50-045
ø 10 x 50 - M 5	62-3-50-050
ø 10 x 60 - M 5	62-3-50-060
ø 10 x 70 - M 5	62-3-50-070
ø 10 x 80 - M 5	62-3-50-080
ø 10 x 90 - M 5	62-3-50-090
ø 10 x 100 - M 5	62-3-50-100

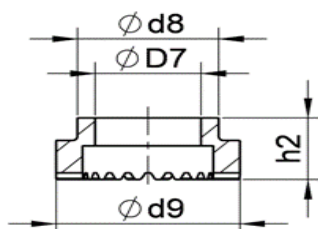
ø 10 x 15 - M 6	62-3-60-015
ø 10 x 20 - M 6	62-3-60-020
ø 10 x 25 - M 6	62-3-60-025
ø 10 x 30 - M 6	62-3-60-030
ø 10 x 35 - M 6	62-3-60-035
ø 10 x 40 - M 6	62-3-60-040
ø 10 x 45 - M 6	62-3-60-045
ø 10 x 50 - M 6	62-3-60-050
ø 10 x 60 - M 6	62-3-60-060
ø 10 x 70 - M 6	62-3-60-070
ø 10 x 80 - M 6	62-3-60-080
ø 10 x 90 - M 6	62-3-60-090
ø 10 x 100 - M 6	62-3-60-100

ø 12 x 15 - M 8	62-3-82-015
ø 12 x 20 - M 8	62-3-82-020
ø 12 x 25 - M 8	62-3-82-025
ø 12 - 30 - M 8	62-3-82-030
ø 12 x 35 - M 8	62-3-82-035
ø 12 x 40 - M 8	62-3-82-040
ø 12 x 45 - M 8	62-3-82-045
ø 12 x 50 - M 8	62-3-82-050
ø 12 x 60 - M 8	62-3-82-060
ø 12 x 70 - M 8	62-3-82-070
ø 12 x 80 - M 8	62-3-82-080
ø 12 x 90 - M 8	62-3-82-090
ø 12 x 100 - M 8	62-3-82-100

Keramický kroužek

UF 10

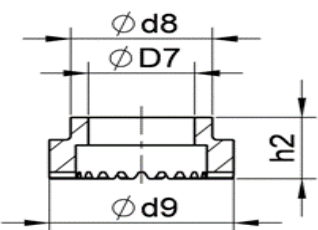
73-00-010



	UF ø10
D <sub>7</sub>	10,2
d <sub>8</sub>	15
d <sub>9</sub>	17,8
h <sub>2</sub>	~ 10

UF 10

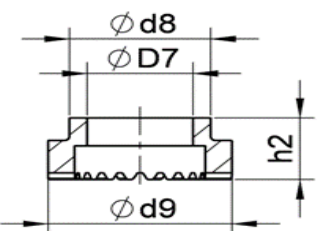
73-00-010



	UF ø10
D <sub>7</sub>	10,2
d <sub>8</sub>	15
d <sub>9</sub>	17,8
h <sub>2</sub>	~ 10

UF 12

73-00-010



	UF ø12
D <sub>7</sub>	12,2
d <sub>8</sub>	16,5
d <sub>9</sub>	20
h <sub>2</sub>	~ 10,7

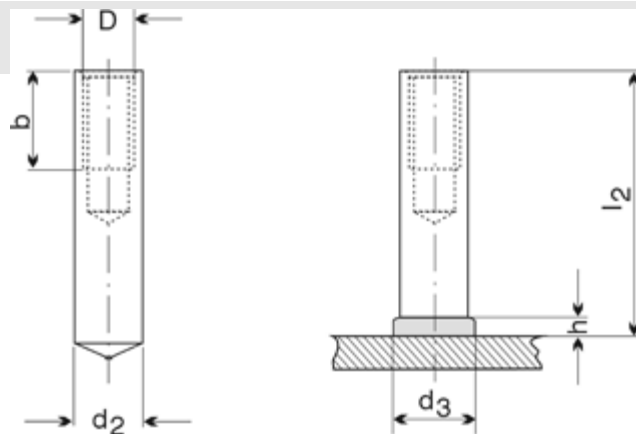


# Svorník s vnitřním závitem typ ID

druh materiálu:

- materiál : nerez **1.4571**

D	I <sub>2</sub>	d <sub>2</sub>	d <sub>3</sub>	b	h
M5	15~100	10	13	7	4
M6	15~100	10	13	9	4
M8	15~100	12	16	12	5
M10	20~100	14,6	18,5	15	5,8
M12	25~100	18,3	23,2	15	7
M16	40~100	22	28	24	10



Rozměr

Objednáací číslo

ø 14,6 x 20 - M 10	62-3-04,6-020
ø 14,6 x 25 - M 10	62-3-04,6-025
ø 14,6 x 30 - M 10	62-3-04,6-030
ø 14,6 x 35 - M 10	62-3-04,6-035
ø 14,6 x 40 - M 10	62-3-04,6-040
ø 14,6 x 45 - M 10	62-3-04,6-045
ø 14,6 x 50 - M 10	62-3-04,6-050
ø 14,6 x 60 - M 10	62-3-04,6-060
ø 14,6 x 70 - M 10	62-3-04,6-070
ø 14,6 x 80 - M 10	62-3-04,6-080
ø 14,6 x 90 - M 10	62-3-04,6-090
ø 14,6 x 100 - M 10	62-3-04,6-100

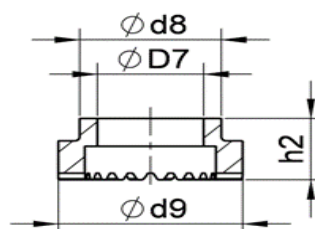
ø 18,3 x 25 - M 12	62-3-12-025
ø 18,3 x 30 - M 12	62-3-12-030
ø 18,3 x 35 - M 12	62-3-12-035
ø 18,3 x 40 - M 12	62-3-12-040
ø 18,3 x 45 - M 12	62-3-12-045
ø 18,3 x 50 - M 12	62-3-12-050
ø 18,3 x 60 - M 12	62-3-12-060
ø 18,3 x 70 - M 12	62-3-12-070
ø 18,3 x 80 - M 12	62-3-12-080
ø 18,3 x 90 - M 12	62-3-12-090
ø 18,3 x 100 - M 12	62-3-12-100

ø 22 x 40 - M 16	62-3-16-040
ø 22 x 45 - M 16	62-3-16-045
ø 22 x 50 - M 16	62-3-16-050
ø 22 x 60 - M 16	62-3-16-060
ø 22 x 70 - M 16	62-3-16-070
ø 22 x 80 - M 16	62-3-16-080
ø 22 x 90 - M 16	62-3-16-090
ø 22 x 100 - M 16	62-3-16-100

Keramický kroužek

PF 16

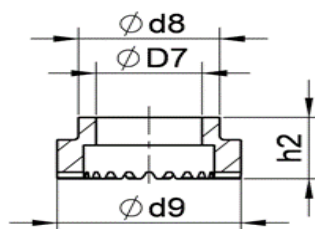
72-00-016



	PF ø16
D <sub>7</sub>	15
d <sub>8</sub>	20
d <sub>9</sub>	26
h <sub>2</sub>	~ 11

UF 19

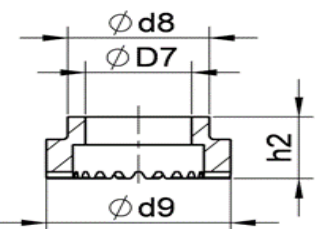
73-00-019



	UF ø19
D <sub>7</sub>	20,4
d <sub>8</sub>	26,1
d <sub>9</sub>	32,8
h <sub>2</sub>	~ 14,2

UF 22

73-00-022



	UF ø22
D <sub>7</sub>	22,8
d <sub>8</sub>	30,7
d <sub>9</sub>	38,5
h <sub>2</sub>	~ 18,5

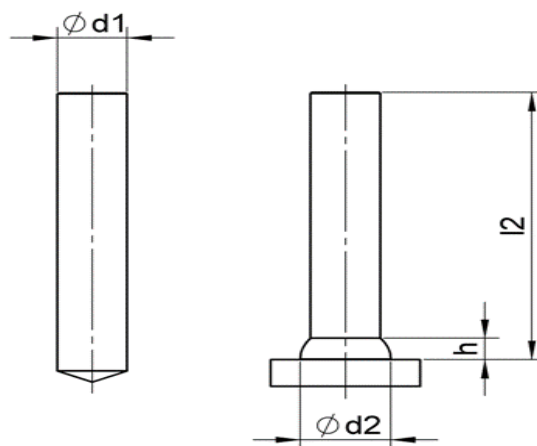


# Svorník bez závitů typ UD

druh materiálu:

- materiál : ocel 4.8 **St37-3k**

$d_1$	$I_2$	$d_2$	$h$
ø6	15~100	8,5	4,0
ø8	15~100	11	4,0
ø10	20~100	13	4,0
ø12	20~100	16	5,0
ø14,6	30~200	18,5	6,0
ø16	30~200	21	7,0
ø20	40~200	26	9,0
ø22	40~200	28	10,0

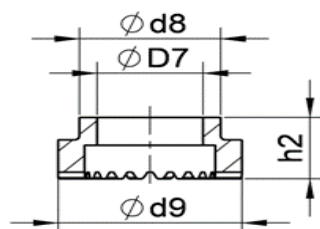


Rozměr \_\_\_\_\_ Objednáací číslo \_\_\_\_\_

Keramický kroužek \_\_\_\_\_

ø 6 x 15	56-06-015
ø 6 x 20	56-06-020
ø 6 x 25	56-06-025
ø 6 x 30	56-06-030
ø 6 x 35	56-06-035
ø 6 x 40	56-06-040
ø 6 x 45	56-06-045
ø 6 x 50	56-06-050
ø 6 x 60	56-06-060
ø 6 x 70	56-06-070
ø 6 x 80	56-06-080
ø 6 x 90	56-06-090
ø 6 x 100	56-06-100

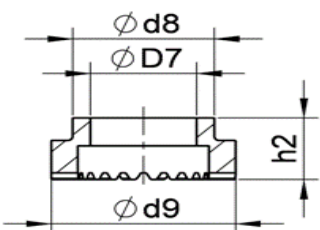
UF 6 \_\_\_\_\_ 73-00-006



	UF ø 6
$D_7$	6,2
$d_8$	9,5
$d_9$	11,5
$h_2$	~ 8,7

ø 8 x 15	56-08-015
ø 8 x 20	56-08-020
ø 8 x 25	56-08-025
ø 8 x 30	56-08-030
ø 8 x 35	56-08-035
ø 8 x 40	56-08-040
ø 8 x 45	56-08-045
ø 8 x 50	56-08-050
ø 8 x 60	56-08-060
ø 8 x 70	56-08-070
ø 8 x 80	56-08-080
ø 8 x 90	56-08-090
ø 8 x 100	56-08-100

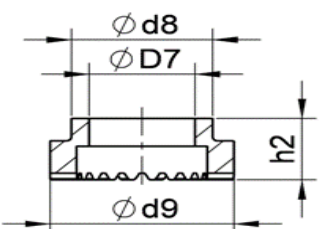
UF 8 \_\_\_\_\_ 73-00-008



	UF ø 8
$D_7$	8,2
$d_8$	15
$d_9$	11
$h_2$	~ 8,7

ø 10 x 15	56-10-015
ø 10 x 20	56-10-020
ø 10 x 25	56-10-025
ø 10 x 30	56-10-030
ø 10 x 35	56-10-035
ø 10 x 40	56-10-040
ø 10 x 45	56-10-045
ø 10 x 50	56-10-050
ø 10 x 60	56-10-060
ø 10 x 70	56-10-070
ø 10 x 80	56-10-080
ø 10 x 90	56-10-090
ø 10 x 100	56-10-100

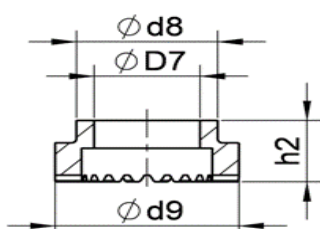
UF 10 \_\_\_\_\_ 73-00-010



	UF ø 10
$D_7$	10,2
$d_8$	15
$d_9$	17,8
$h_2$	~ 10

ø 12 x 20	56-12-020
ø 12 x 30	56-12-030
ø 12 x 40	56-12-040
ø 12 x 50	56-12-050
ø 12 x 60	56-12-060
ø 12 x 70	56-12-070
ø 12 x 80	56-12-080
ø 12 x 90	56-12-090
ø 12 x 100	56-12-100

UF 12 \_\_\_\_\_ 73-00-012



	UF ø 12
$D_7$	12,2
$d_8$	16,5
$d_9$	20
$h_2$	~ 10,7

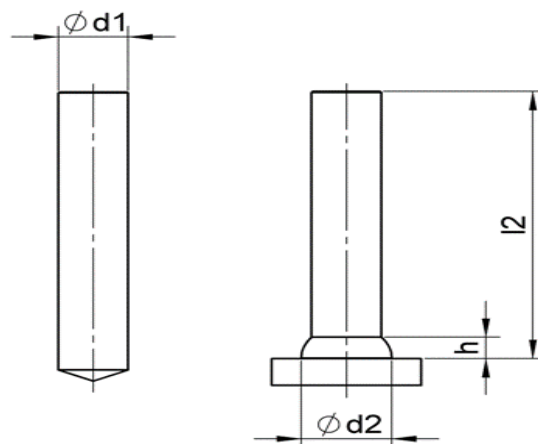


# Svorník bez závitů typ UD

druh materiálu:

- materiál : ocel 4.8 **St37-3k**

$d_1$	$I_2$	$d_2$	$h$
ø6	15~100	8,5	4,0
ø8	15~100	11	4,0
ø10	20~100	13	4,0
ø12	20~100	16	5,0
ø14,6	30~200	18,5	6,0
ø16	30~200	21	7,0
ø20	40~200	26	9,0
ø22	40~200	28	10,0



Rozměr

Objednáací číslo

Keramický kroužek

ø 14,6 x 30	56-14,6-030
ø 14,6 x 40	56-14,6-040
ø 14,6 x 50	56-14,6-050
ø 14,6 x 60	56-14,6-060
ø 14,6 x 70	56-14,6-070
ø 14,6 x 80	56-14,6-080
ø 14,6 x 90	56-14,6-090
ø 14,6 x 100	56-14,6-100
ø 14,6 x 140	56-14,6-140
ø 14,6 x 150	56-14,6-150
ø 14,6 x 200	56-14,6-200

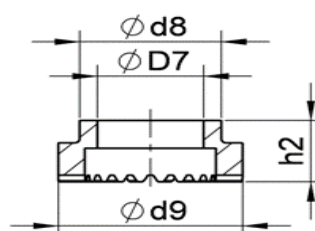
ø 16 x 30	56-16-030
ø 16 x 40	56-16-040
ø 16 x 45	56-16-045
ø 16 x 50	56-16-050
ø 16 x 60	56-16-060
ø 16 x 70	56-16-070
ø 16 x 80	56-16-080
ø 16 x 90	56-16-090
ø 16 x 100	56-16-100
ø 16 x 150	56-16-150
ø 16 x 200	56-16-200

ø 20 x 40	56-20-040
ø 20 x 50	56-20-050
ø 20 x 60	56-20-060
ø 20 x 70	56-20-070
ø 20 x 80	56-20-080
ø 20 x 90	56-20-090
ø 20 x 100	56-20-100
ø 20 x 150	56-20-150
ø 20 x 200	56-20-200

ø 22 x 40	56-22-040
ø 22 x 50	56-22-050
ø 22 x 60	56-22-060
ø 22 x 70	56-22-070
ø 22 x 80	56-22-080
ø 22 x 90	56-22-090
ø 22 x 100	56-22-100
ø 22 x 150	56-22-150
ø 22 x 200	56-22-200

PF 16

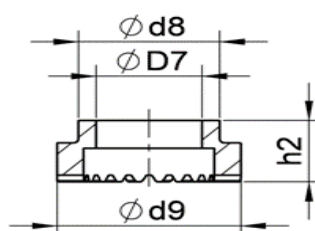
72-00-016



	PF ø16
$D_7$	15
$d_8$	20
$d_9$	26
$h_2$	~ 11

UF 16

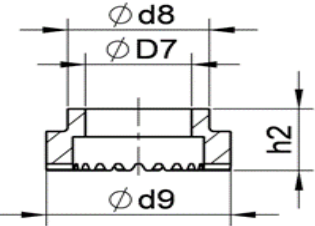
73-00-016



	UF ø16
$D_7$	16,3
$d_8$	26
$d_9$	30
$h_2$	~ 13

UF 20

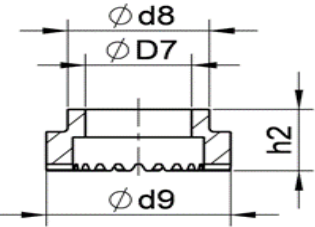
73-00-020



	UF ø20
$D_7$	20,4
$d_8$	26,1
$d_9$	32,8
$h_2$	~ 14,2

UF 22

73-00-022



	UF ø22
$D_7$	22,8
$d_8$	30,7
$d_9$	38,5
$h_2$	~ 18,5

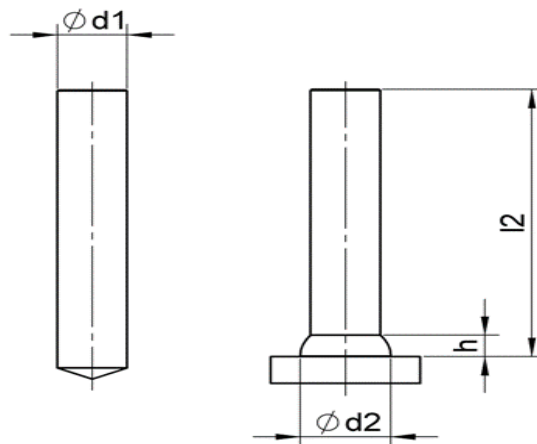


# Svorník bez závitů typ UD

druh materiálu:

- materiál : nerez **A2-50**

$d_1$	$I_2$	$d_2$	$h$
ø6	15~100	8,5	4,0
ø8	15~100	11	4,0
ø10	20~100	13	4,0
ø12	20~100	16	5,0
ø14,6	30~200	18,5	6,0
ø16	30~200	21	7,0
ø20	40~200	26	9,0
ø22	40~200	28	10,0

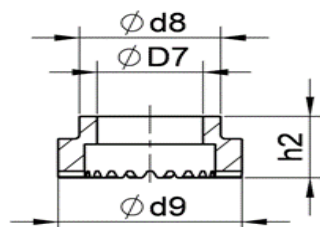


Rozměr \_\_\_\_\_ Objednáací číslo \_\_\_\_\_

Keramický kroužek \_\_\_\_\_

ø 6 x 15	57-06-015
ø 6 x 20	57-06-020
ø 6 x 25	57-06-025
ø 6 x 30	57-06-030
ø 6 x 35	57-06-035
ø 6 x 40	57-06-040
ø 6 x 45	57-06-045
ø 6 x 50	57-06-050
ø 6 x 60	57-06-060
ø 6 x 70	57-06-070
ø 6 x 80	57-06-080
ø 6 x 90	57-06-090
ø 6 x 100	57-06-100

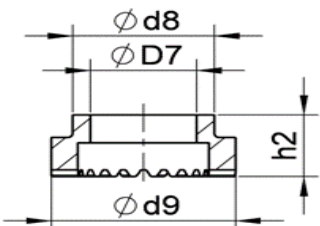
UF 6 \_\_\_\_\_ 73-00-006



	UF ø 6
$D_7$	6,2
$d_8$	9,5
$d_9$	11,5
$h_2$	~ 8,7

ø 8 x 15	57-08-015
ø 8 x 20	57-08-020
ø 8 x 25	57-08-025
ø 8 x 30	57-08-030
ø 8 x 35	57-08-035
ø 8 x 40	57-08-040
ø 8 x 45	57-08-045
ø 8 x 50	57-08-050
ø 8 x 60	57-08-060
ø 8 x 70	57-08-070
ø 8 x 80	57-08-080
ø 8 x 90	57-08-090
ø 8 x 100	57-08-100

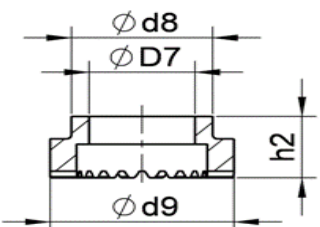
UF 8 \_\_\_\_\_ 73-00-008



	UF ø 8
$D_7$	8,2
$d_8$	15
$d_9$	11
$h_2$	~ 8,7

ø 10 x 15	57-10-015
ø 10 x 20	57-10-020
ø 10 x 25	57-10-025
ø 10 x 30	57-10-030
ø 10 x 35	57-10-035
ø 10 x 40	57-10-040
ø 10 x 45	57-10-045
ø 10 x 50	57-10-050
ø 10 x 60	57-10-060
ø 10 x 70	57-10-070
ø 10 x 80	57-10-080
ø 10 x 90	57-10-090
ø 10 x 100	57-10-100

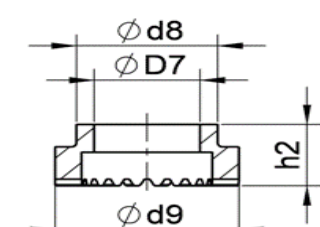
UF 10 \_\_\_\_\_ 73-00-010



	UF ø 10
$D_7$	10,2
$d_8$	15
$d_9$	17,8
$h_2$	~ 10

ø 12 x 20	57-12-020
ø 12 x 30	57-12-030
ø 12 x 40	57-12-040
ø 12 x 50	57-12-050
ø 12 x 60	57-12-060
ø 12 x 70	57-12-070
ø 12 x 80	57-12-080
ø 12 x 90	57-12-090
ø 12 x 100	57-12-100

UF 12 \_\_\_\_\_ 73-00-012



	UF ø 12
$D_7$	12,2
$d_8$	16,5
$d_9$	20
$h_2$	~ 10,7

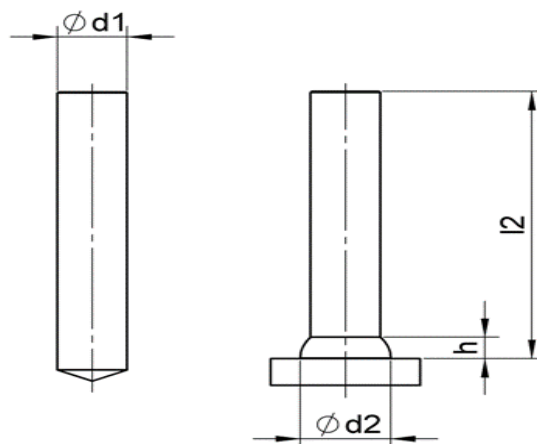


# Svorník bez závitů typ UD

druh materiálu:

- materiál : nerez **A2-50**

$d_1$	$I_2$	$d_2$	$h$
ø6	15~100	8,5	4,0
ø8	15~100	11	4,0
ø10	20~100	13	4,0
ø12	20~100	16	5,0
ø14,6	30~200	18,5	6,0
ø16	30~200	21	7,0
ø20	40~200	26	9,0
ø22	40~200	28	10,0



Rozměr \_\_\_\_\_ Objednáací číslo \_\_\_\_\_

ø 14,6 x 30	57-14,6-030
ø 14,6 x 40	57-14,6-040
ø 14,6 x 50	57-14,6-050
ø 14,6 x 60	57-14,6-060
ø 14,6 x 70	57-14,6-070
ø 14,6 x 80	57-14,6-080
ø 14,6 x 90	57-14,6-090
ø 14,6 x 100	57-14,6-100
ø 14,6 x 140	57-14,6-140
ø 14,6 x 150	57-14,6-150
ø 14,6 x 200	57-14,6-200

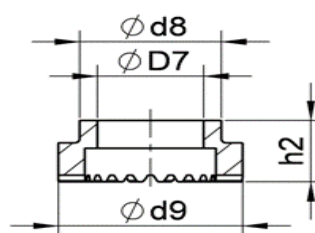
ø 16 x 30	57-16-030
ø 16 x 40	57-16-040
ø 16 x 45	57-16-045
ø 16 x 50	57-16-050
ø 16 x 60	57-16-060
ø 16 x 70	57-16-070
ø 16 x 80	57-16-080
ø 16 x 90	57-16-090
ø 16 x 100	57-16-100
ø 16 x 150	57-16-150
ø 16 x 200	57-16-200

ø 20 x 40	57-20-040
ø 20 x 50	57-20-050
ø 20 x 60	57-20-060
ø 20 x 70	57-20-070
ø 20 x 80	57-20-080
ø 20 x 90	57-20-090
ø 20 x 100	57-20-100
ø 20 x 150	57-20-150
ø 20 x 200	57-20-200

ø 22 x 40	57-22-040
ø 22 x 50	57-22-050
ø 22 x 60	57-22-060
ø 22 x 70	57-22-070
ø 22 x 80	57-22-080
ø 22 x 90	57-22-090
ø 22 x 100	57-22-100
ø 22 x 150	57-22-150
ø 22 x 200	57-22-200

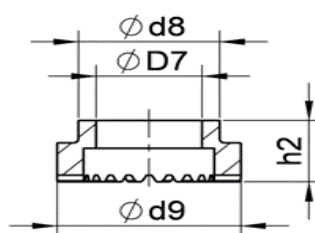
Keramický kroužek \_\_\_\_\_

**PF 16** **72-00-016**



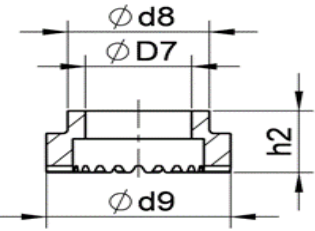
	PF ø16
$D_7$	15
$d_8$	20
$d_9$	26
$h_2$	~ 11

**UF 16** **73-00-016**



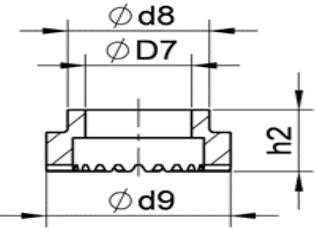
	UF ø16
$D_7$	16,3
$d_8$	26
$d_9$	30
$h_2$	~ 13

**UF 20** **73-00-020**



	UF ø20
$D_7$	20,4
$d_8$	26,1
$d_9$	32,8
$h_2$	~ 14,2

**UF 22** **73-00-022**



	UF ø22
$D_7$	22,8
$d_8$	30,7
$d_9$	38,5
$h_2$	~ 18,5

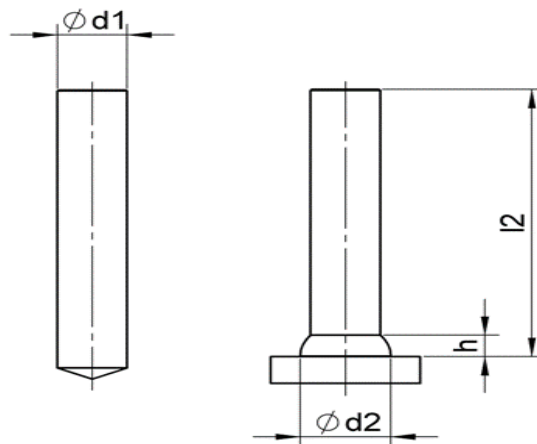


# Svorník bez závitů typ UD

druh materiálu:

- materiál : nerez **1.4571**

$d_1$	$I_2$	$d_2$	$h$
ø6	15~100	8,5	4,0
ø8	15~100	11	4,0
ø10	20~100	13	4,0
ø12	20~100	16	5,0
ø14,6	30~200	18,5	6,0
ø16	30~200	21	7,0
ø20	40~200	26	9,0
ø22	40~200	28	10,0

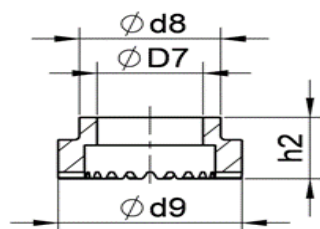


Rozměr \_\_\_\_\_ Objednáací číslo \_\_\_\_\_

Keramický kroužek \_\_\_\_\_

ø 6 x 15	58-06-015
ø 6 x 20	58-06-020
ø 6 x 25	58-06-025
ø 6 x 30	58-06-030
ø 6 x 35	58-06-035
ø 6 x 40	58-06-040
ø 6 x 45	58-06-045
ø 6 x 50	58-06-050
ø 6 x 60	58-06-060
ø 6 x 70	58-06-070
ø 6 x 80	58-06-080
ø 6 x 90	58-06-090
ø 6 x 100	58-06-100

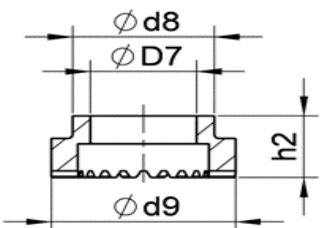
UF 6 73-00-006



	UF ø 6
$D_7$	6,2
$d_8$	9,5
$d_9$	11,5
$h_2$	~ 8,7

ø 8 x 15	58-08-015
ø 8 x 20	58-08-020
ø 8 x 25	58-08-025
ø 8 x 30	58-08-030
ø 8 x 35	58-08-035
ø 8 x 40	58-08-040
ø 8 x 45	58-08-045
ø 8 x 50	58-08-050
ø 8 x 60	58-08-060
ø 8 x 70	58-08-070
ø 8 x 80	58-08-080
ø 8 x 90	58-08-090
ø 8 x 100	58-08-100

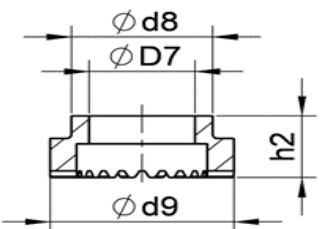
UF 8 73-00-008



	UF ø 8
$D_7$	8,2
$d_8$	15
$d_9$	11
$h_2$	~ 8,7

ø 10 x 15	58-10-015
ø 10 x 20	58-10-020
ø 10 x 25	58-10-025
ø 10 x 30	58-10-030
ø 10 x 35	58-10-035
ø 10 x 40	58-10-040
ø 10 x 45	58-10-045
ø 10 x 50	58-10-050
ø 10 x 60	58-10-060
ø 10 x 70	58-10-070
ø 10 x 80	58-10-080
ø 10 x 90	58-10-090
ø 10 x 100	58-10-100

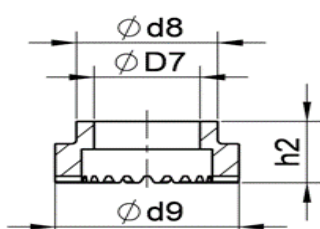
UF 10 73-00-010



	UF ø 10
$D_7$	10,2
$d_8$	15
$d_9$	17,8
$h_2$	~ 10

ø 12 x 20	58-12-020
ø 12 x 30	58-12-030
ø 12 x 40	58-12-040
ø 12 x 50	58-12-050
ø 12 x 60	58-12-060
ø 12 x 70	58-12-070
ø 12 x 80	58-12-080
ø 12 x 90	58-12-090
ø 12 x 100	58-12-100

UF 12 73-00-012



	UF ø 12
$D_7$	12,2
$d_8$	16,5
$d_9$	20
$h_2$	~ 10,7

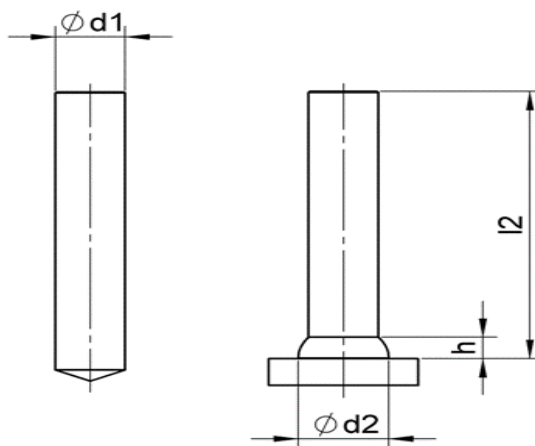


# Svorník bez závitů typ UD

druh materiálu:

- materiál : nerez **1.4571**

$d_1$	$I_2$	$d_2$	$h$
ø6	15~100	8,5	4,0
ø8	15~100	11	4,0
ø10	20~100	13	4,0
ø12	20~100	16	5,0
ø14,6	30~200	18,5	6,0
ø16	30~200	21	7,0
ø20	40~200	26	9,0
ø22	40~200	28	10,0



Rozměr \_\_\_\_\_ Objednáací číslo \_\_\_\_\_

ø 14,6 x 30	58-14,6-030
ø 14,6 x 40	58-14,6-040
ø 14,6 x 50	58-14,6-050
ø 14,6 x 60	58-14,6-060
ø 14,6 x 70	58-14,6-070
ø 14,6 x 80	58-14,6-080
ø 14,6 x 90	58-14,6-090
ø 14,6 x 100	58-14,6-100
ø 14,6 x 140	58-14,6-140
ø 14,6 x 150	58-14,6-150
ø 14,6 x 200	58-14,6-200

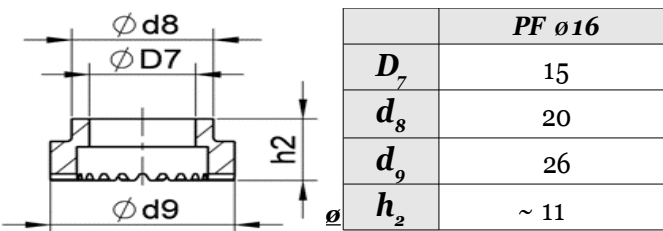
ø 16 x 30	58-16-030
ø 16 x 40	58-16-040
ø 16 x 45	58-16-045
ø 16 x 50	58-16-050
ø 16 x 60	58-16-060
ø 16 x 70	58-16-070
ø 16 x 80	58-16-080
ø 16 x 90	58-16-090
ø 16 x 100	58-16-100
ø 16 x 150	58-16-150
ø 16 x 200	58-16-200

ø 20 x 40	58-20-040
ø 20 x 50	58-20-050
ø 20 x 60	58-20-060
ø 20 x 70	58-20-070
ø 20 x 80	58-20-080
ø 20 x 90	58-20-090
ø 20 x 100	58-20-100
ø 20 x 150	58-20-150
ø 20 x 200	58-20-200

ø 22 x 40	58-22-040
ø 22 x 50	58-22-050
ø 22 x 60	58-22-060
ø 22 x 70	58-22-070
ø 22 x 80	58-22-080
ø 22 x 90	58-22-090
ø 22 x 100	58-22-100
ø 22 x 150	58-22-150
ø 22 x 200	58-22-200

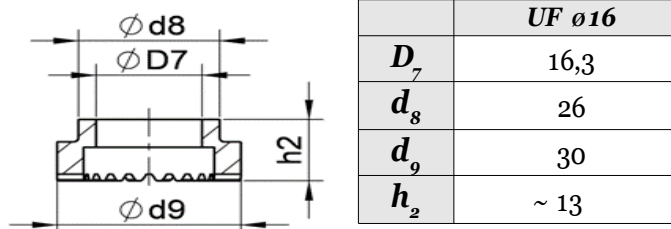
Keramický kroužek \_\_\_\_\_

PF 16 72-00-016



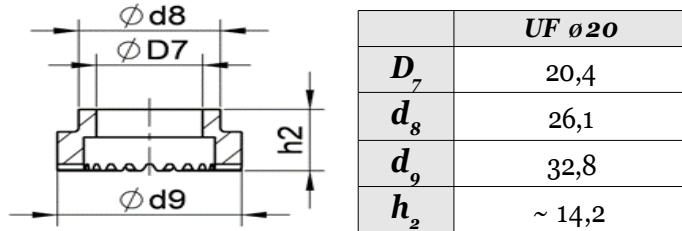
	PF ø16
$D_7$	15
$d_8$	20
$d_9$	26
$h_2$	~ 11

UF 16 73-00-016



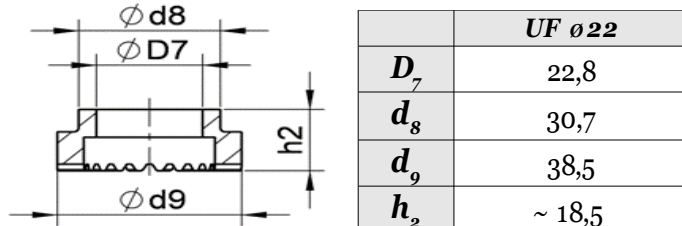
	UF ø16
$D_7$	16,3
$d_8$	26
$d_9$	30
$h_2$	~ 13

UF 20 73-00-020



	UF ø20
$D_7$	20,4
$d_8$	26,1
$d_9$	32,8
$h_2$	~ 14,2

UF 22 73-00-022



	UF ø22
$D_7$	22,8
$d_8$	30,7
$d_9$	38,5
$h_2$	~ 18,5

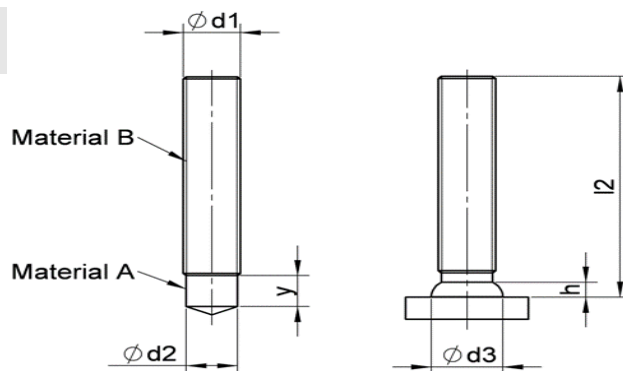
# Svorník se závitem *typ MPF-DUO*

druh materiálu:

- materiál A : ocel **St37-3k**

- materiál B : nerez **A2-50**

$d_1$	$I_2$	$y$	$d_2$	$d_3$	$h$
M8	15~100	6	7,1	10	3
M10	15~100	7	8,95	12,5	3,4
M12	20~100	8	10,5	14,5	4,2
M16	25~100	11	14,6	17,8	5,8

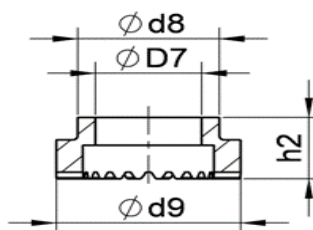


Rozměr \_\_\_\_\_ Objednáací číslo \_\_\_\_\_

Keramický kroužek \_\_\_\_\_

<b>MPF DUO 8 x 15</b>	<b>78-12-08-015-PF</b>
<b>MPF DUO 8 x 20</b>	<b>78-12-08-020-PF</b>
<b>MPF DUO 8 x 25</b>	<b>78-12-08-025-PF</b>
<b>MPF DUO 8 x 30</b>	<b>78-12-08-030-PF</b>
<b>MPF DUO 8 x 35</b>	<b>78-12-08-035-PF</b>
<b>MPF DUO 8 x 40</b>	<b>78-12-08-040-PF</b>
<b>MPF DUO 8 x 45</b>	<b>78-12-08-045-PF</b>
<b>MPF DUO 8 x 50</b>	<b>78-12-08-050-PF</b>
<b>MPF DUO 8 x 55</b>	<b>78-12-08-055-PF</b>
<b>MPF DUO 8 x 60</b>	<b>78-12-08-060-PF</b>
<b>MPF DUO 8 x 70</b>	<b>78-12-08-070-PF</b>
<b>MPF DUO 8 x 80</b>	<b>78-12-08-080-PF</b>
<b>MPF DUO 8 x 90</b>	<b>78-12-08-090-PF</b>
<b>MPF DUO 8 x 100</b>	<b>78-12-08-100-PF</b>

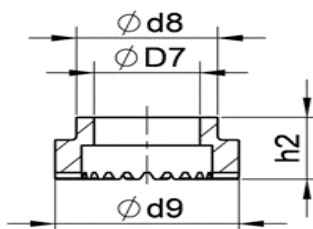
**KSP-F 8** \_\_\_\_\_ **72-00-008-F**



	<b>KSP-F ø 8</b>
$D_7$	7,8
$d_8$	14,6
$d_9$	17,6
$h_2$	5

<b>MPF DUO 10 x 15</b>	<b>78-12-10-015-PF</b>
<b>MPF DUO 10 x 20</b>	<b>78-12-10-020-PF</b>
<b>MPF DUO 10 x 25</b>	<b>78-12-10-025-PF</b>
<b>MPF DUO 10 x 30</b>	<b>78-12-10-030-PF</b>
<b>MPF DUO 10 x 35</b>	<b>78-12-10-035-PF</b>
<b>MPF DUO 10 x 40</b>	<b>78-12-10-040-PF</b>
<b>MPF DUO 10 x 45</b>	<b>78-12-10-045-PF</b>
<b>MPF DUO 10 x 50</b>	<b>78-12-10-050-PF</b>
<b>MPF DUO 10 x 55</b>	<b>78-12-10-055-PF</b>
<b>MPF DUO 10 x 60</b>	<b>78-12-10-060-PF</b>
<b>MPF DUO 10 x 70</b>	<b>78-12-10-070-PF</b>
<b>MPF DUO 10 x 80</b>	<b>78-12-10-080-PF</b>
<b>MPF DUO 10 x 90</b>	<b>78-12-10-090-PF</b>
<b>MPF DUO 10 x 100</b>	<b>78-12-10-100-PF</b>

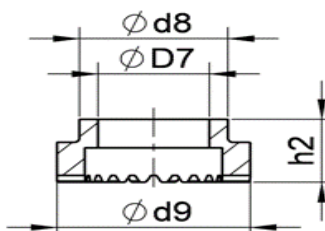
**KSP-F 10** \_\_\_\_\_ **72-00-010-F**



	<b>KSP-F ø 10</b>
$D_7$	9,6
$d_8$	16,5
$d_9$	20
$h_2$	~5,5

<b>MPF DUO 12 x 20</b>	<b>78-12-12-020-PF</b>
<b>MPF DUO 12 x 25</b>	<b>78-12-12-025-PF</b>
<b>MPF DUO 12 x 30</b>	<b>78-12-12-030-PF</b>
<b>MPF DUO 12 x 35</b>	<b>78-12-12-035-PF</b>
<b>MPF DUO 12 x 40</b>	<b>78-12-12-040-PF</b>
<b>MPF DUO 12 x 45</b>	<b>78-12-12-045-PF</b>
<b>MPF DUO 12 x 50</b>	<b>78-12-12-050-PF</b>
<b>MPF DUO 12 x 55</b>	<b>78-12-12-055-PF</b>
<b>MPF DUO 12 x 60</b>	<b>78-12-12-060-PF</b>
<b>MPF DUO 12 x 70</b>	<b>78-12-12-070-PF</b>
<b>MPF DUO 12 x 80</b>	<b>78-12-12-080-PF</b>
<b>MPF DUO 12 x 90</b>	<b>78-12-12-090-PF</b>
<b>MPF DUO 12 x 100</b>	<b>78-12-12-100-PF</b>

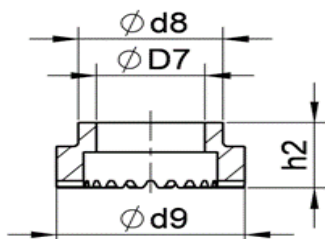
**KSP-F 12** \_\_\_\_\_ **72-00-012-F**



	<b>KSP-F ø 12</b>
$D_7$	11
$d_8$	20
$d_9$	23,4
$h_2$	~5,7

<b>MPF DUO 16 x 25</b>	<b>78-12-16-025-PF</b>
<b>MPF DUO 16 x 30</b>	<b>78-12-16-030-PF</b>
<b>MPF DUO 16 x 35</b>	<b>78-12-16-035-PF</b>
<b>MPF DUO 16 x 40</b>	<b>78-12-16-040-PF</b>
<b>MPF DUO 16 x 45</b>	<b>78-12-16-045-PF</b>
<b>MPF DUO 16 x 50</b>	<b>78-12-16-050-PF</b>
<b>MPF DUO 16 x 55</b>	<b>78-12-16-055-PF</b>
<b>MPF DUO 16 x 60</b>	<b>78-12-16-060-PF</b>
<b>MPF DUO 16 x 70</b>	<b>78-12-16-070-PF</b>
<b>MPF DUO 16 x 80</b>	<b>78-12-16-080-PF</b>
<b>MPF DUO 16 x 90</b>	<b>78-12-16-090-PF</b>
<b>MPF DUO 16 x 100</b>	<b>78-12-16-100-PF</b>

**KSP-F 16** \_\_\_\_\_ **72-00-016-F**



	<b>KSP-F ø 16</b>
$D_7$	15,5
$d_8$	26
$d_9$	29
$h_2$	~9

# Svorník se závitem *typ MPF -DUO*

druh materiálu:

- materiál A : ocel **St37-3k**

- materiál B : nerez **1.4571**

$d_1$	$I_2$	$y$	$d_2$	$d_3$	$h$
M8	15~100	6	7,1	10	3
M10	15~100	7	8,95	12,5	3,4
M12	20~100	8	10,5	14,5	4,2
M16	25~100	11	14,6	17,8	5,8

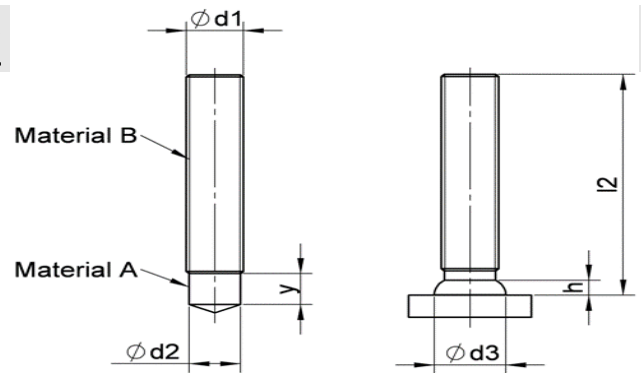
Rozměr \_\_\_\_\_ Objednáací číslo \_\_\_\_\_

<b>MPF DUO 8 x 15</b>	<b>78-14-08-015-PF</b>
<b>MPF DUO 8 x 20</b>	<b>78-14-08-020-PF</b>
<b>MPF DUO 8 x 25</b>	<b>78-14-08-025-PF</b>
<b>MPF DUO 8 x 30</b>	<b>78-14-08-030-PF</b>
<b>MPF DUO 8 x 35</b>	<b>78-14-08-035-PF</b>
<b>MPF DUO 8 x 40</b>	<b>78-14-08-040-PF</b>
<b>MPF DUO 8 x 45</b>	<b>78-14-08-045-PF</b>
<b>MPF DUO 8 x 50</b>	<b>78-14-08-050-PF</b>
<b>MPF DUO 8 x 55</b>	<b>78-14-08-055-PF</b>
<b>MPF DUO 8 x 60</b>	<b>78-14-08-060-PF</b>
<b>MPF DUO 8 x 70</b>	<b>78-14-08-070-PF</b>
<b>MPF DUO 8 x 80</b>	<b>78-14-08-080-PF</b>
<b>MPF DUO 8 x 90</b>	<b>78-14-08-090-PF</b>
<b>MPF DUO 8 x 100</b>	<b>78-14-08-100-PF</b>

<b>MPF DUO 10 x 15</b>	<b>78-14-10-015-PF</b>
<b>MPF DUO 10 x 20</b>	<b>78-14-10-020-PF</b>
<b>MPF DUO 10 x 25</b>	<b>78-14-10-025-PF</b>
<b>MPF DUO 10 x 30</b>	<b>78-14-10-030-PF</b>
<b>MPF DUO 10 x 35</b>	<b>78-14-10-035-PF</b>
<b>MPF DUO 10 x 40</b>	<b>78-14-10-040-PF</b>
<b>MPF DUO 10 x 45</b>	<b>78-14-10-045-PF</b>
<b>MPF DUO 10 x 50</b>	<b>78-14-10-050-PF</b>
<b>MPF DUO 10 x 55</b>	<b>78-14-10-055-PF</b>
<b>MPF DUO 10 x 60</b>	<b>78-14-10-060-PF</b>
<b>MPF DUO 10 x 70</b>	<b>78-14-10-070-PF</b>
<b>MPF DUO 10 x 80</b>	<b>78-14-10-080-PF</b>
<b>MPF DUO 10 x 90</b>	<b>78-14-10-090-PF</b>
<b>MPF DUO 10 x 100</b>	<b>78-14-10-100-PF</b>

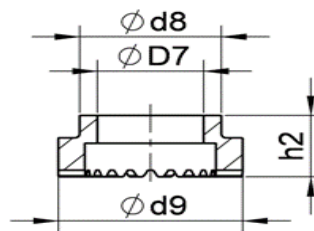
<b>MPF DUO 12 x 20</b>	<b>78-14-12-020-PF</b>
<b>MPF DUO 12 x 25</b>	<b>78-14-12-025-PF</b>
<b>MPF DUO 12 x 30</b>	<b>78-14-12-030-PF</b>
<b>MPF DUO 12 x 35</b>	<b>78-14-12-035-PF</b>
<b>MPF DUO 12 x 40</b>	<b>78-14-12-040-PF</b>
<b>MPF DUO 12 x 45</b>	<b>78-14-12-045-PF</b>
<b>MPF DUO 12 x 50</b>	<b>78-14-12-050-PF</b>
<b>MPF DUO 12 x 55</b>	<b>78-14-12-055-PF</b>
<b>MPF DUO 12 x 60</b>	<b>78-14-12-060-PF</b>
<b>MPF DUO 12 x 70</b>	<b>78-14-12-070-PF</b>
<b>MPF DUO 12 x 80</b>	<b>78-14-12-080-PF</b>
<b>MPF DUO 12 x 90</b>	<b>78-14-12-090-PF</b>
<b>MPF DUO 12 x 100</b>	<b>78-14-12-100-PF</b>

<b>MPF DUO 16 x 25</b>	<b>78-14-16-025-PF</b>
<b>MPF DUO 16 x 30</b>	<b>78-14-16-030-PF</b>
<b>MPF DUO 16 x 35</b>	<b>78-14-16-035-PF</b>
<b>MPF DUO 16 x 40</b>	<b>78-14-16-040-PF</b>
<b>MPF DUO 16 x 45</b>	<b>78-14-16-045-PF</b>
<b>MPF DUO 16 x 50</b>	<b>78-14-16-050-PF</b>
<b>MPF DUO 16 x 55</b>	<b>78-14-16-055-PF</b>
<b>MPF DUO 16 x 60</b>	<b>78-14-16-060-PF</b>
<b>MPF DUO 16 x 70</b>	<b>78-14-16-070-PF</b>
<b>MPF DUO 16 x 80</b>	<b>78-14-16-080-PF</b>
<b>MPF DUO 16 x 90</b>	<b>78-14-16-090-PF</b>
<b>MPF DUO 16 x 100</b>	<b>78-14-16-100-PF</b>



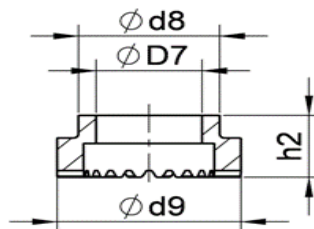
Keramický kroužek \_\_\_\_\_

**KSP-F 8** \_\_\_\_\_ **72-00-008-F**



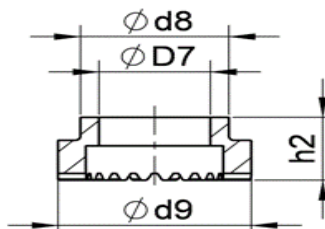
	<b>KSP-F ø 8</b>
$D_7$	7,8
$d_8$	14,6
$d_9$	17,6
$h_2$	5

**KSP-F 10** \_\_\_\_\_ **72-00-010-F**



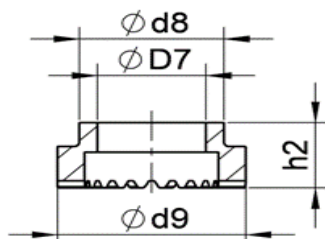
	<b>KSP-F ø 10</b>
$D_7$	9,6
$d_8$	16,5
$d_9$	20
$h_2$	~5,5

**KSP-F 12** \_\_\_\_\_ **72-00-012-F**



	<b>KSP-F ø 12</b>
$D_7$	11
$d_8$	20
$d_9$	23,4
$h_2$	~5,7

**KSP-F 16** \_\_\_\_\_ **72-00-016-F**



	<b>KSP-F ø 16</b>
$D_7$	15,5
$d_8$	26
$d_9$	29
$h_2$	~9

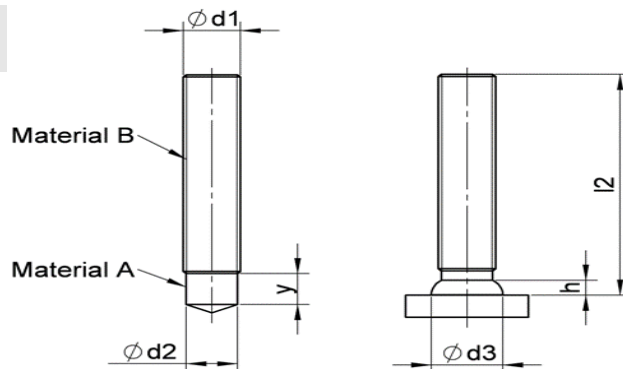
# Svorník se závitem *typ MR-DUO*

druh materiálu:

- materiál A : ocel **St37-3k**

- materiál B : nerez **A2-50**

$d_1$	$I_2$	$y$	$d_2$	$d_3$	$h$
M8	15~100	4	6,2	9	2,5
M10	15~100	5	7,9	11,5	3
M12	20~100	6	9,5	13,5	4
M16	25~100	7,5/11	13,2	18	5

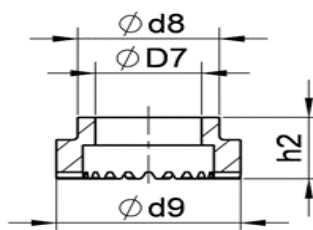


Rozměr \_\_\_\_\_ Objednáací číslo \_\_\_\_\_

Keramický kroužek \_\_\_\_\_

<b>MR DUO 8 x 15</b>	<b>78-12-08-015-R</b>
<b>MR DUO 8 x 20</b>	<b>78-12-08-020-R</b>
<b>MR DUO 8 x 25</b>	<b>78-12-08-025-R</b>
<b>MR DUO 8 x 30</b>	<b>78-12-08-030-R</b>
<b>MR DUO 8 x 35</b>	<b>78-12-08-035-R</b>
<b>MR DUO 8 x 40</b>	<b>78-12-08-040-R</b>
<b>MR DUO 8 x 45</b>	<b>78-12-08-045-R</b>
<b>MR DUO 8 x 50</b>	<b>78-12-08-050-R</b>
<b>MR DUO 8 x 55</b>	<b>78-12-08-055-R</b>
<b>MR DUO 8 x 60</b>	<b>78-12-08-060-R</b>
<b>MR DUO 8 x 70</b>	<b>78-12-08-070-R</b>
<b>MR DUO 8 x 80</b>	<b>78-12-08-080-R</b>
<b>MR DUO 8 x 90</b>	<b>78-12-08-090-R</b>
<b>MR DUO 8 x 100</b>	<b>78-12-08-100-R</b>

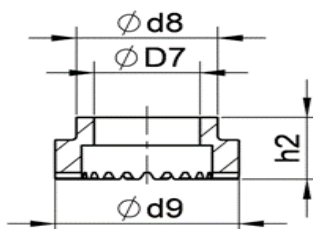
**RF 8** \_\_\_\_\_ **71-00-008**



	<b>RF ø 8</b>
$D_7$	8,2
$d_8$	12
$d_9$	15,3
$h_2$	~10

<b>MR DUO 10 x 15</b>	<b>78-12-10-015-R</b>
<b>MR DUO 10 x 20</b>	<b>78-12-10-020-R</b>
<b>MR DUO 10 x 25</b>	<b>78-12-10-025-R</b>
<b>MR DUO 10 x 30</b>	<b>78-12-10-030-R</b>
<b>MR DUO 10 x 35</b>	<b>78-12-10-035-R</b>
<b>MR DUO 10 x 40</b>	<b>78-12-10-040-R</b>
<b>MR DUO 10 x 45</b>	<b>78-12-10-045-R</b>
<b>MR DUO 10 x 50</b>	<b>78-12-10-050-R</b>
<b>MR DUO 10 x 55</b>	<b>78-12-10-055-R</b>
<b>MR DUO 10 x 60</b>	<b>78-12-10-060-R</b>
<b>MR DUO 10 x 70</b>	<b>78-12-10-070-R</b>
<b>MR DUO 10 x 80</b>	<b>78-12-10-080-R</b>
<b>MR DUO 10 x 90</b>	<b>78-12-10-090-R</b>
<b>MR DUO 10 x 100</b>	<b>78-12-10-100-R</b>

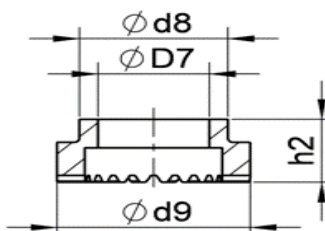
**RF 10** \_\_\_\_\_ **71-00-010**



	<b>RF ø 10</b>
$D_7$	10,2
$d_8$	15
$d_9$	18,5
$h_2$	~11,5

<b>MR DUO 12 x 20</b>	<b>78-12-12-020-R</b>
<b>MR DUO 12 x 25</b>	<b>78-12-12-025-R</b>
<b>MR DUO 12 x 30</b>	<b>78-12-12-030-R</b>
<b>MR DUO 12 x 35</b>	<b>78-12-12-035-R</b>
<b>MR DUO 12 x 40</b>	<b>78-12-12-040-R</b>
<b>MR DUO 12 x 45</b>	<b>78-12-12-045-R</b>
<b>MR DUO 12 x 50</b>	<b>78-12-12-050-R</b>
<b>MR DUO 12 x 55</b>	<b>78-12-12-055-R</b>
<b>MR DUO 12 x 60</b>	<b>78-12-12-060-R</b>
<b>MR DUO 12 x 70</b>	<b>78-12-12-070-R</b>
<b>MR DUO 12 x 80</b>	<b>78-12-12-080-R</b>
<b>MR DUO 12 x 90</b>	<b>78-12-12-090-R</b>
<b>MR DUO 12 x 100</b>	<b>78-12-12-100-R</b>

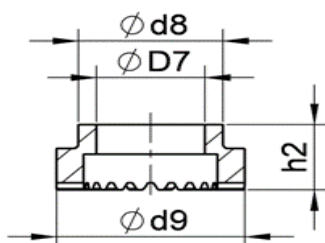
**RF 12** \_\_\_\_\_ **71-00-012**



	<b>RF ø 12</b>
$D_7$	12,2
$d_8$	17
$d_9$	20
$h_2$	~13

<b>MR DUO 16 x 25</b>	<b>78-12-16-025-R</b>
<b>MR DUO 16 x 30</b>	<b>78-12-16-030-R</b>
<b>MR DUO 16 x 35</b>	<b>78-12-16-035-R</b>
<b>MR DUO 16 x 40</b>	<b>78-12-16-040-R</b>
<b>MR DUO 16 x 45</b>	<b>78-12-16-045-R</b>
<b>MR DUO 16 x 50</b>	<b>78-12-16-050-R</b>
<b>MR DUO 16 x 55</b>	<b>78-12-16-055-R</b>
<b>MR DUO 16 x 60</b>	<b>78-12-16-060-R</b>
<b>MR DUO 16 x 70</b>	<b>78-12-16-070-R</b>
<b>MR DUO 16 x 80</b>	<b>78-12-16-080-R</b>
<b>MR DUO 16 x 90</b>	<b>78-12-16-090-R</b>
<b>MR DUO 16 x 100</b>	<b>78-12-16-100-R</b>

**RF 16** \_\_\_\_\_ **71-00-016**



	<b>RF ø 16</b>
$D_7$	16,3
$d_8$	20,5
$d_9$	26,5
$h_2$	~15,3

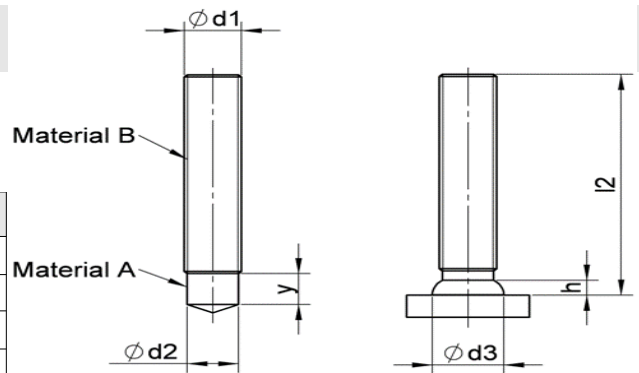
# Svorník se závitem *typ MR-DUO*

druh materiálu:

- materiál A : ocel **St37-3k**

- materiál B : nerez **1.4571**

$d_1$	$I_2$	$y$	$d_2$	$d_3$	$h$
M8	15~100	4	6,2	9	2,5
M10	15~100	5	7,9	11,5	3
M12	20~100	6	9,5	13,5	4
M16	25~100	7,5/11	13,2	18	5



Rozměr \_\_\_\_\_ Objednáací číslo \_\_\_\_\_

<b>MR DUO 8 x 15</b>	<b>78-14-08-015-R</b>
<b>MR DUO 8 x 20</b>	<b>78-14-08-020-R</b>
<b>MR DUO 8 x 25</b>	<b>78-14-08-025-R</b>
<b>MR DUO 8 x 30</b>	<b>78-14-08-030-R</b>
<b>MR DUO 8 x 35</b>	<b>78-14-08-035-R</b>
<b>MR DUO 8 x 40</b>	<b>78-14-08-040-R</b>
<b>MR DUO 8 x 45</b>	<b>78-14-08-045-R</b>
<b>MR DUO 8 x 50</b>	<b>78-14-08-050-R</b>
<b>MR DUO 8 x 55</b>	<b>78-14-08-055-R</b>
<b>MR DUO 8 x 60</b>	<b>78-14-08-060-R</b>
<b>MR DUO 8 x 70</b>	<b>78-14-08-070-R</b>
<b>MR DUO 8 x 80</b>	<b>78-14-08-080-R</b>
<b>MR DUO 8 x 90</b>	<b>78-14-08-090-R</b>
<b>MR DUO 8 x 100</b>	<b>78-14-08-100-R</b>

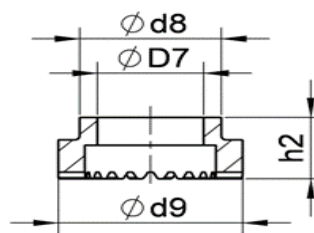
<b>MR DUO 10 x 15</b>	<b>78-14-10-015-R</b>
<b>MR DUO 10 x 20</b>	<b>78-14-10-020-R</b>
<b>MR DUO 10 x 25</b>	<b>78-14-10-025-R</b>
<b>MR DUO 10 x 30</b>	<b>78-14-10-030-R</b>
<b>MR DUO 10 x 35</b>	<b>78-14-10-035-R</b>
<b>MR DUO 10 x 40</b>	<b>78-14-10-040-R</b>
<b>MR DUO 10 x 45</b>	<b>78-14-10-045-R</b>
<b>MR DUO 10 x 50</b>	<b>78-14-10-050-R</b>
<b>MR DUO 10 x 55</b>	<b>78-14-10-055-R</b>
<b>MR DUO 10 x 60</b>	<b>78-14-10-060-R</b>
<b>MR DUO 10 x 70</b>	<b>78-14-10-070-R</b>
<b>MR DUO 10 x 80</b>	<b>78-14-10-080-R</b>
<b>MR DUO 10 x 90</b>	<b>78-14-10-090-R</b>
<b>MR DUO 10 x 100</b>	<b>78-14-10-100-R</b>

<b>MR DUO 12 x 20</b>	<b>78-14-12-020-R</b>
<b>MR DUO 12 x 25</b>	<b>78-14-12-025-R</b>
<b>MR DUO 12 x 30</b>	<b>78-14-12-030-R</b>
<b>MR DUO 12 x 35</b>	<b>78-14-12-035-R</b>
<b>MR DUO 12 x 40</b>	<b>78-14-12-040-R</b>
<b>MR DUO 12 x 45</b>	<b>78-14-12-045-R</b>
<b>MR DUO 12 x 50</b>	<b>78-14-12-050-R</b>
<b>MR DUO 12 x 55</b>	<b>78-14-12-055-R</b>
<b>MR DUO 12 x 60</b>	<b>78-14-12-060-R</b>
<b>MR DUO 12 x 70</b>	<b>78-14-12-070-R</b>
<b>MR DUO 12 x 80</b>	<b>78-14-12-080-R</b>
<b>MR DUO 12 x 90</b>	<b>78-14-12-090-R</b>
<b>MR DUO 12 x 100</b>	<b>78-14-12-100-R</b>

<b>MR DUO 16 x 25</b>	<b>78-14-16-025-R</b>
<b>MR DUO 16 x 30</b>	<b>78-14-16-030-R</b>
<b>MR DUO 16 x 35</b>	<b>78-14-16-035-R</b>
<b>MR DUO 16 x 40</b>	<b>78-14-16-040-R</b>
<b>MR DUO 16 x 45</b>	<b>78-14-16-045-R</b>
<b>MR DUO 16 x 50</b>	<b>78-14-16-050-R</b>
<b>MR DUO 16 x 55</b>	<b>78-14-16-055-R</b>
<b>MR DUO 16 x 60</b>	<b>78-14-16-060-R</b>
<b>MR DUO 16 x 70</b>	<b>78-14-16-070-R</b>
<b>MR DUO 16 x 80</b>	<b>78-14-16-080-R</b>
<b>MR DUO 16 x 90</b>	<b>78-14-16-090-R</b>
<b>MR DUO 16 x 100</b>	<b>78-14-16-100-R</b>

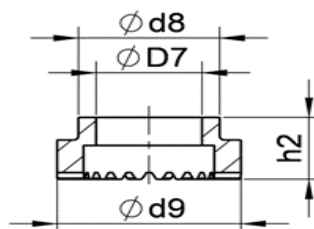
Keramický kroužek \_\_\_\_\_

**RF 8** \_\_\_\_\_ **71-00-008**



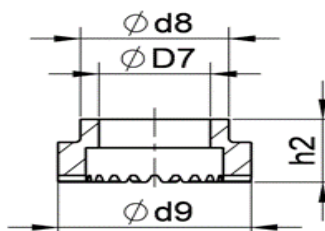
<b>RF <math>\phi</math> 8</b>	
$D_7$	8,2
$d_8$	12
$d_9$	15,3
$h_2$	~10

**RF 10** \_\_\_\_\_ **71-00-010**



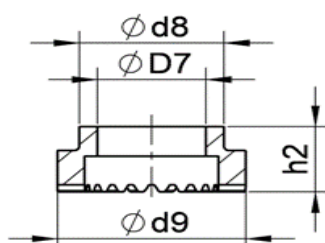
<b>RF <math>\phi</math> 10</b>	
$D_7$	10,2
$d_8$	15
$d_9$	18,5
$h_2$	~11,5

**RF 12** \_\_\_\_\_ **71-00-012**



<b>RF <math>\phi</math> 12</b>	
$D_7$	12,2
$d_8$	17
$d_9$	20
$h_2$	~13

**RF 16** \_\_\_\_\_ **71-00-016**



<b>RF <math>\phi</math> 16</b>	
$D_7$	16,3
$d_8$	20,5
$d_9$	26,5
$h_2$	~15,3

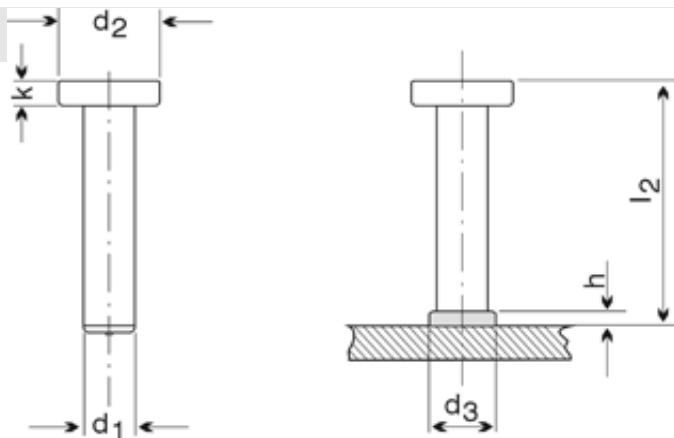


# Spřahovací trn typ SD

druh materiálu:

- materiál : ocel 4.8 **St37-3k**

$d_1$	$l_2$	$d_2$	$d_3$	$k$	$h$
10	50~125	19,1	12,5	7,1	4
13	50~175	25,4	17	8	5
16	50~175	31,7	21	8	7
19	50~175	31,7	24	10	9
22	75~200	34,9	28	10	10
25	100~175	40,9	30,5	12,7	10



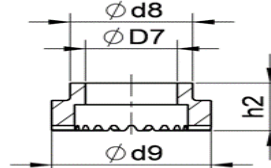
Rozměr \_\_\_\_\_ Objednáací číslo \_\_\_\_\_ Váha 100 ks/ kg \_\_\_\_\_

Keramický kroužek

10 x 50	70-10-050	4,4
10 x 75	70-10-075	6,0
10 x 100	70-10-100	7,3
10 x 125	70-10-125	8,2
10 x 150	70-10-150	10,3
10 x 175	70-10-175	11,8

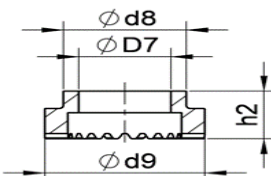
UF 10

75-00-010



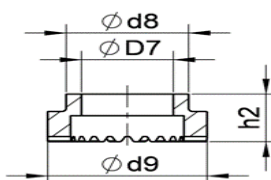
	UF ø10
$D_7$	10,2
$d_8$	15
$d_9$	17,8
$h_2$	~ 10

13 x 25	70-13-025	5,2
13 x 50	70-13-050	7,9
13 x 75	70-13-075	9,8
13 x 100	70-13-100	12,3
13 x 125	70-13-125	14,8
13 x 150	70-13-150	17,3



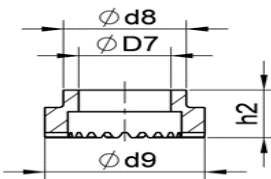
	UF ø13
$D_7$	13,1
$d_8$	20
$d_9$	22,2
$h_2$	~ 11

16 x 35	70-16-035	9,2
16 x 50	70-16-050	11,8
16 x 75	70-16-075	15,7
16 x 100	70-16-100	19,5
16 x 125	70-16-125	23,4
16 x 150	70-16-150	27,2
16 x 175	70-16-175	31,1



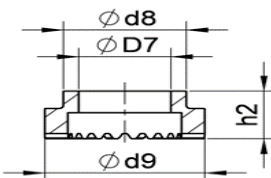
	UF ø16
$D_7$	16,3
$d_8$	26
$d_9$	30
$h_2$	~ 13

19 x 50	70-19-050	16,1
19 x 60	70-19-060	17,6
19 x 75	70-19-075	21,2
19 x 80	70-19-080	22,4
19 x 100	70-19-100	26,8
19 x 125	70-19-125	32,4
19 x 150	70-19-150	38,0
19 x 175	70-19-175	43,6



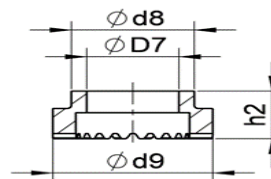
	UF ø19
$D_7$	19,4
$d_8$	26
$d_9$	30,8
$h_2$	~ 16,7

22 x 75	70-22-075	23,0
22 x 90	70-22-090	27,5
22 x 100	70-22-100	32,5
22 x 125	70-22-125	42,5
22 x 150	70-22-150	50,0
22 x 175	70-22-175	57,5
22 x 200	70-22-200	65,0
22 x 250	70-22-250	81,0



	UF ø22
$D_7$	22,8
$d_8$	30,7
$d_9$	38,5
$h_2$	~ 18,5

25 x 100	70-25-100	25,0
25 x 125	70-25-125	30,0
25 x 150	70-25-150	31,0
25 x 175	70-25-175	66,6
25 x 200	70-25-200	77,9
25 x 225	70-25-225	87,6
25 x 250	70-25-250	97,3



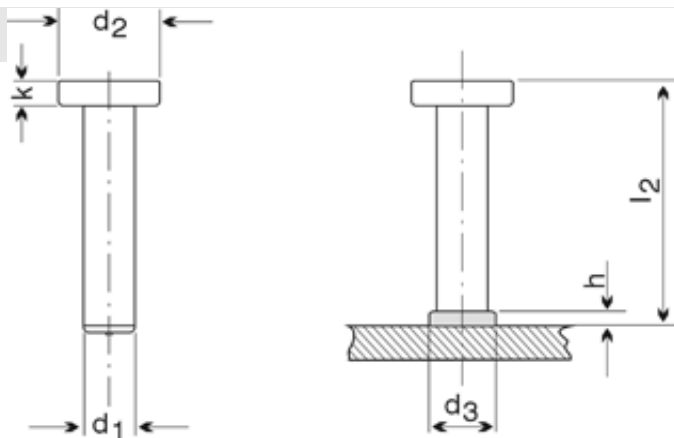
	UF ø25
$D_7$	26
$d_8$	35,5
$d_9$	41
$h_2$	~ 21

# Spřahovací trn typ SD

druh materiálu:

- materiál : nerez **A2-50**

$d_1$	$l_2$	$d_2$	$d_3$	$k$	$h$
10	50~125	19,1	12,5	7,1	4
13	50~175	25,4	17	8	5
16	50~175	31,7	21	8	7
19	50~175	31,7	24	10	9
22	75~200	34,9	28	10	10
25	100~175	40,9	30,5	12,7	10



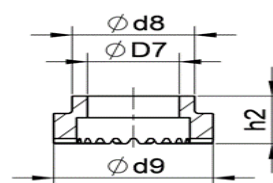
Rozměr

Objednáací číslo

Váha 100 ks/ kg

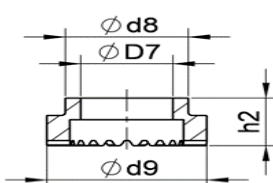
Keramický kroužek

10 x 50	71-10-050	4,4
10 x 75	71-10-075	6,0
10 x 100	71-10-100	7,3
10 x 125	71-10-125	8,2
10 x 150	71-10-150	10,3
10 x 175	71-10-175	11,8



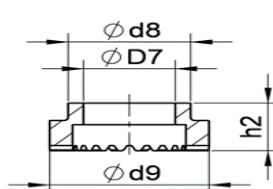
UF ø10	
$D_7$	10,2
$d_8$	15
$d_9$	17,8
$h_2$	~ 10

13 x 25	71-13-025	5,2
13 x 50	71-13-050	7,9
13 x 75	71-13-075	9,8
13 x 100	71-13-100	12,3
13 x 125	71-13-125	14,8
13 x 150	71-13-150	17,3



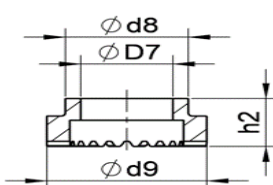
UF ø13	
$D_7$	13,1
$d_8$	20
$d_9$	22,2
$h_2$	~ 11

16 x 35	71-16-035	9,2
16 x 50	71-16-050	11,8
16 x 75	71-16-075	15,7
16 x 100	71-16-100	19,5
16 x 125	71-16-125	23,4
16 x 150	71-16-150	27,2
16 x 175	71-16-175	31,1



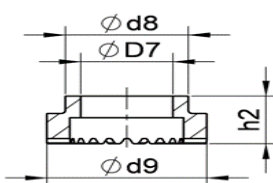
UF ø16	
$D_7$	16,3
$d_8$	26
$d_9$	30
$h_2$	~ 13

19 x 50	71-19-050	16,1
19 x 60	71-19-060	17,6
19 x 75	71-19-075	21,2
19 x 80	71-19-080	22,4
19 x 100	71-19-100	26,8
19 x 125	71-19-125	32,4
19 x 150	71-19-150	38,0
19 x 175	71-19-175	43,6



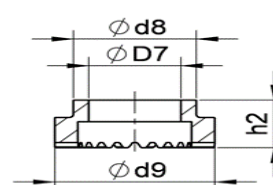
UF ø19	
$D_7$	19,4
$d_8$	26
$d_9$	30,8
$h_2$	~ 16,7

22 x 75	71-22-075	23,0
22 x 90	71-22-090	27,5
22 x 100	71-22-100	32,5
22 x 125	71-22-125	42,5
22 x 150	71-22-150	50,0
22 x 175	71-22-175	57,5
22 x 200	71-22-200	65,0
22 x 250	71-22-250	81,0



UF ø22	
$D_7$	22,8
$d_8$	30,7
$d_9$	38,5
$h_2$	~ 18,5

25 x 100	71-25-100	25,0
25 x 125	71-25-125	30,0
25 x 150	71-25-150	31,0
25 x 175	71-25-175	66,6
25 x 200	71-25-200	77,9
25 x 225	71-25-225	87,6
25 x 250	71-25-250	97,3



UF ø25	
$D_7$	26
$d_8$	35,5
$d_9$	41
$h_2$	~ 21